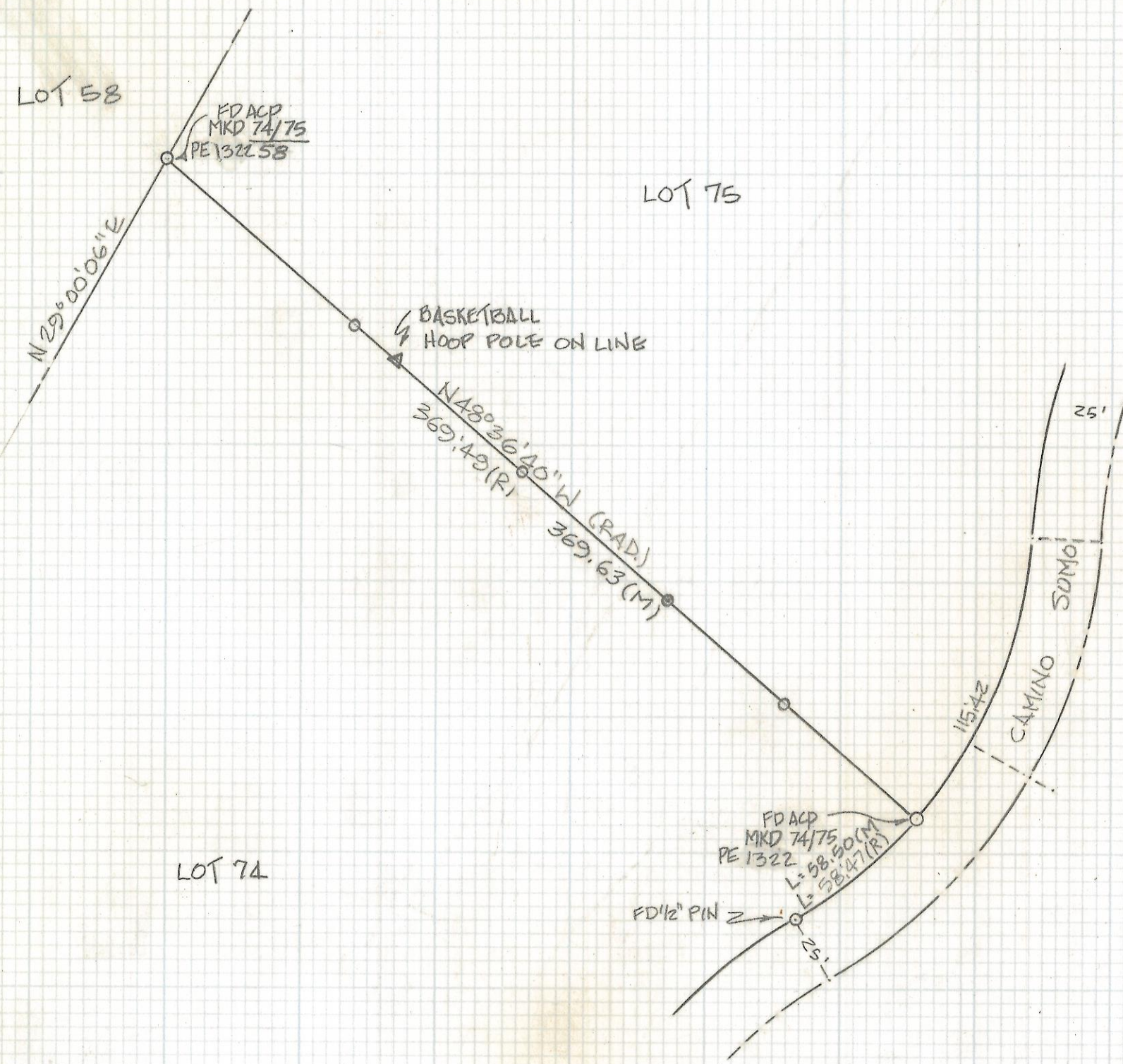


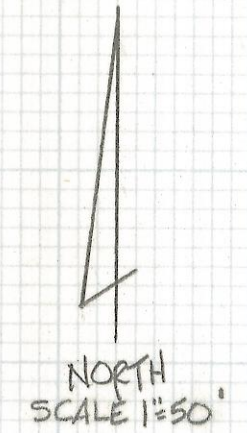
# **DISCLAIMER:**

**This unrecorded Record of Survey was donated to the City of Tucson. The City of Tucson provides this data for your personal use "as is." Additionally, the City of Tucson provides this information with the understanding that it is not guaranteed to be accurate, correct or complete and conclusions drawn from such information are the responsibility of the user.**



NOTES:

- 1) Q - SET PIN ON PROPERTY LINE
- 2) M - MEASURED
- 3) R - MAP OR DEED RECORD



RESULTS OF SURVEY

OF A PORTION OF LOT 74 OF CATALINA FOOTHILLS ESTATES #10 AS SHOWN IN BOOK 36 OF MAPS AND PLATS AT PAGE 97 IN THE OFFICE OF THE PIMA COUNTY RECORDER, PIMA COUNTY, ARIZONA.



Z-2018-135

<b>RFM</b>	ROBERT F. MELLEN	DATE: 9-21-89
	REGISTERED LAND SURVEYOR	DR BY: GM CK BY: RFM
	1250 W. MOHAVE ST. TUCSON, ARIZONA	JOB NO. 89-102
	(602) 888-1012 SCALE: 1" = 50'	SHEET 1 OF 1