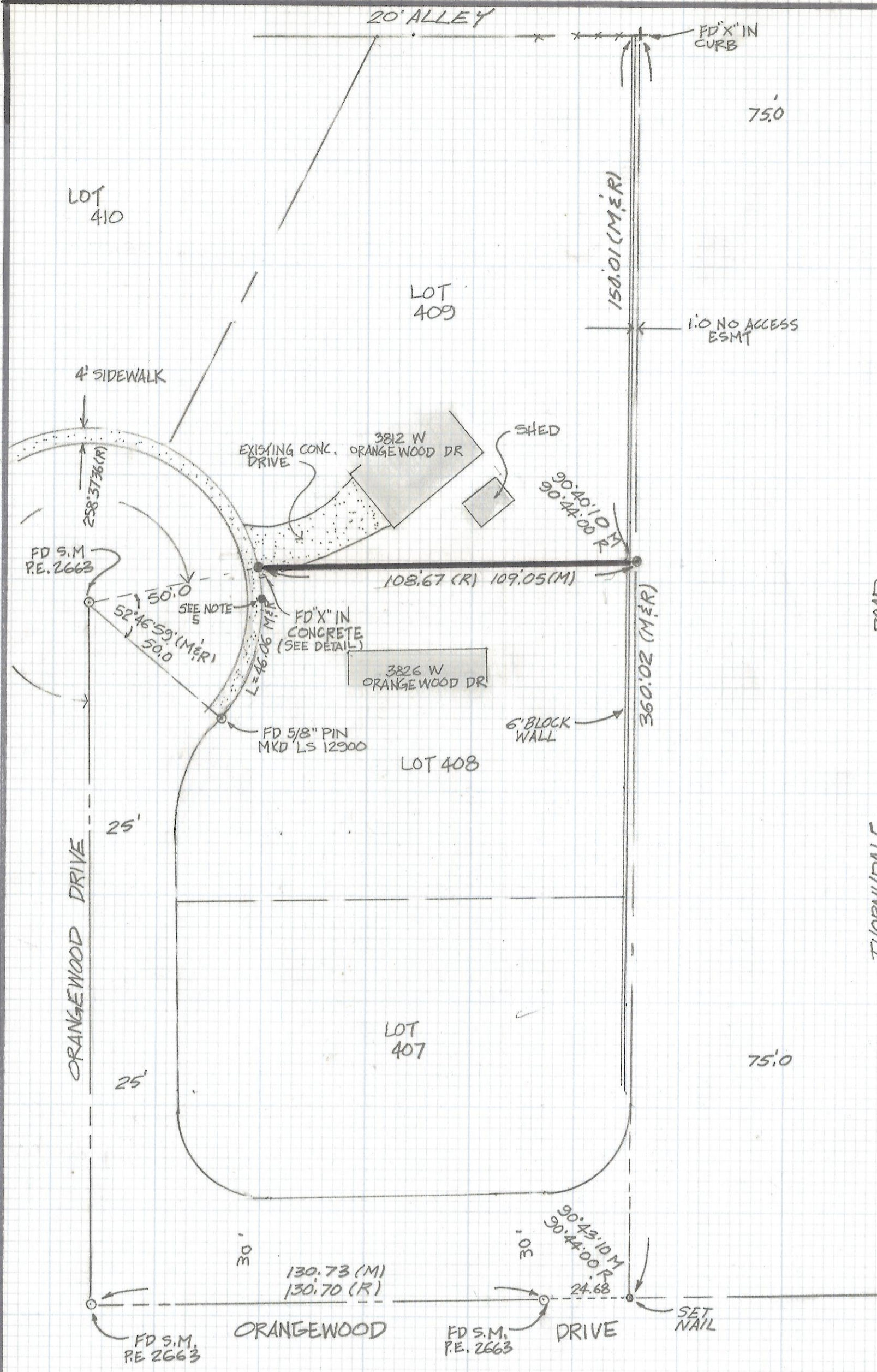


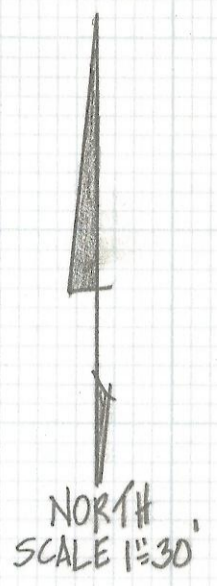
DISCLAIMER:

This unrecorded Record of Survey was donated to the City of Tucson. The City of Tucson provides this data for your personal use "as is." Additionally, the City of Tucson provides this information with the understanding that it is not guaranteed to be accurate, correct or complete and conclusions drawn from such information are the responsibility of the user.



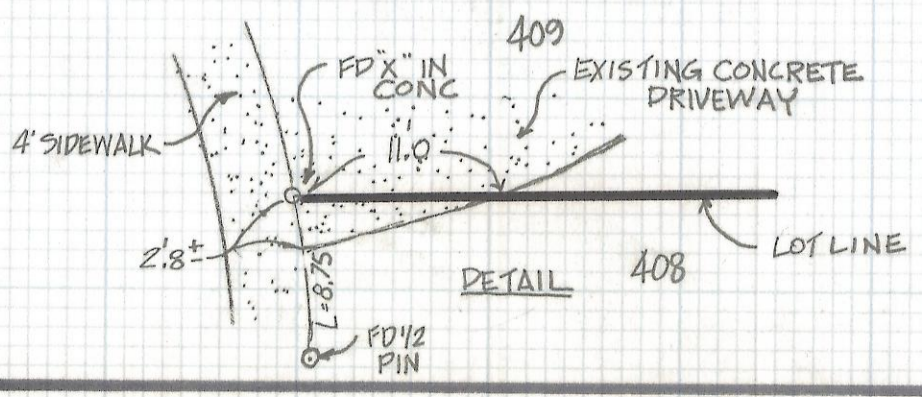
ROAD

- NOTES**
- 1) 0 INDICATES SET 1/2" PIN MKD L.S. 4680 UNLESS NOTED
 - 2) M-MEASURED
 - 3) R-MAP OR DEED RECORD
 - 4) NO SEARCH OF PUBLIC RECORDS WAS MADE IN REGARD TO THIS SURVEY
 - 5) FND UNTAGGED 1/2 PIN 8.75 SOUTH OF CORNER 50' FROM SURVEY MONUMENT



RESULTS OF SURVEY

OF THE LOT LINE BETWEEN LOTS 408 AND 409 OF ORANGE WOOD ESTATES RECORDED IN BOOK 27 OF MAPS AND PLATS AT PAGE 14 IN THE OFFICE OF THE PIMA COUNTY RECORDER PIMA COUNTY ARIZONA



ROBERT F. MELLEN
 REGISTERED LAND SURVEYOR
 TUCSON, ARIZONA
 JOB# 89-106

2-2018-139