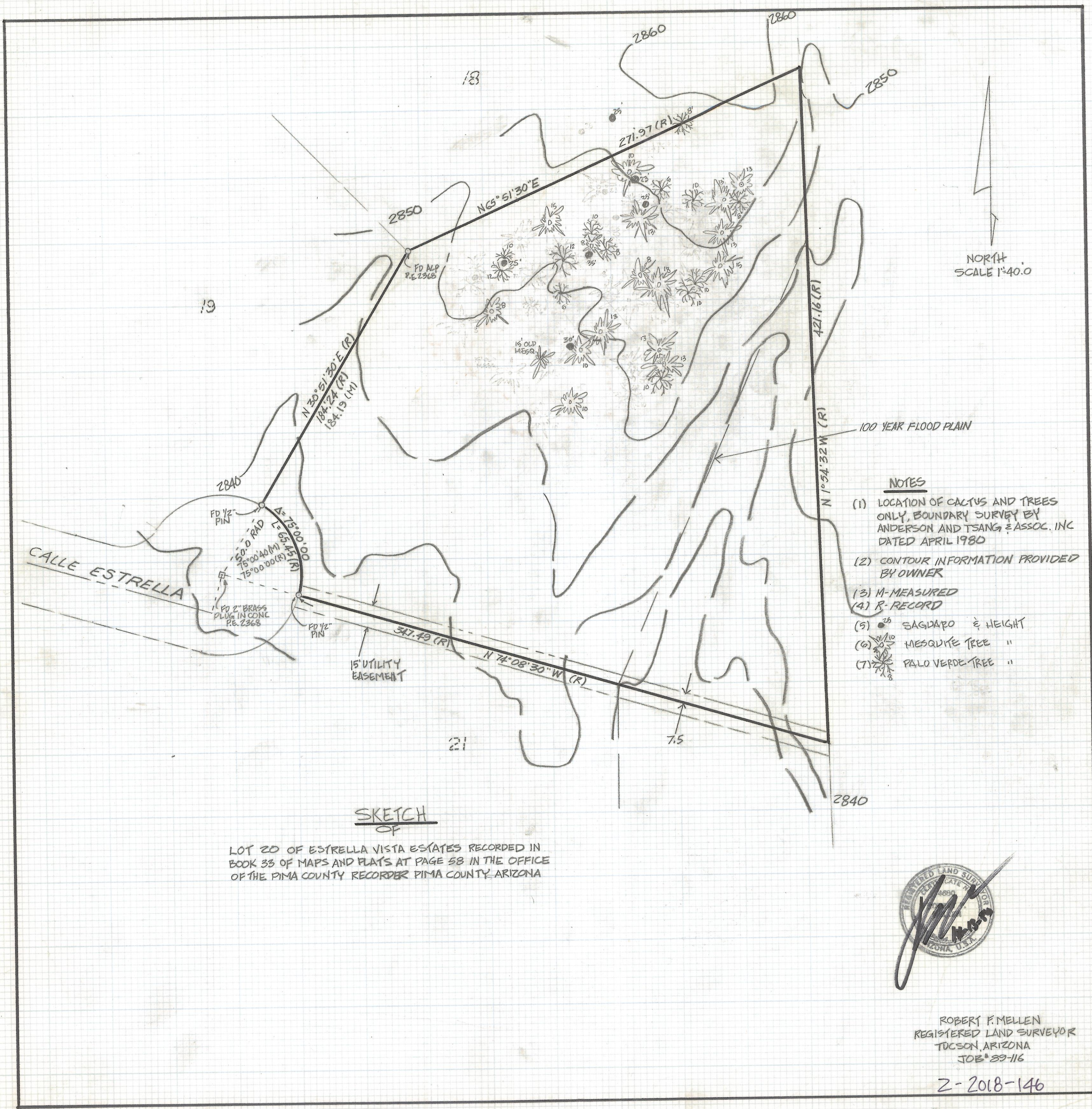


DISCLAIMER:

This unrecorded Record of Survey was donated to the City of Tucson. The City of Tucson provides this data for your personal use "as is." Additionally, the City of Tucson provides this information with the understanding that it is not guaranteed to be accurate, correct or complete and conclusions drawn from such information are the responsibility of the user.



NORTH
SCALE 1"=40.0

NOTES

- (1) LOCATION OF CACTUS AND TREES ONLY, BOUNDARY SURVEY BY ANDERSON AND TSANG & ASSOC., INC DATED APRIL 1980
- (2) CONTOUR INFORMATION PROVIDED BY OWNER
- (3) M-MEASURED
- (4) R-RECORD
- (5) ●²⁵ SAGUARO & HEIGHT
- (6) ●¹⁰ MESQUITE TREE "
- (7) ●³ PALO VERDE TREE "

SKETCH
OF

LOT 20 OF ESTRELLA VISTA ESTATES RECORDED IN BOOK 33 OF MAPS AND PLATS AT PAGE 58 IN THE OFFICE OF THE PIMA COUNTY RECORDER PIMA COUNTY ARIZONA



ROBERT F. MELLEN
REGISTERED LAND SURVEYOR
TUCSON, ARIZONA
JOB # 89-116

Z-2018-146