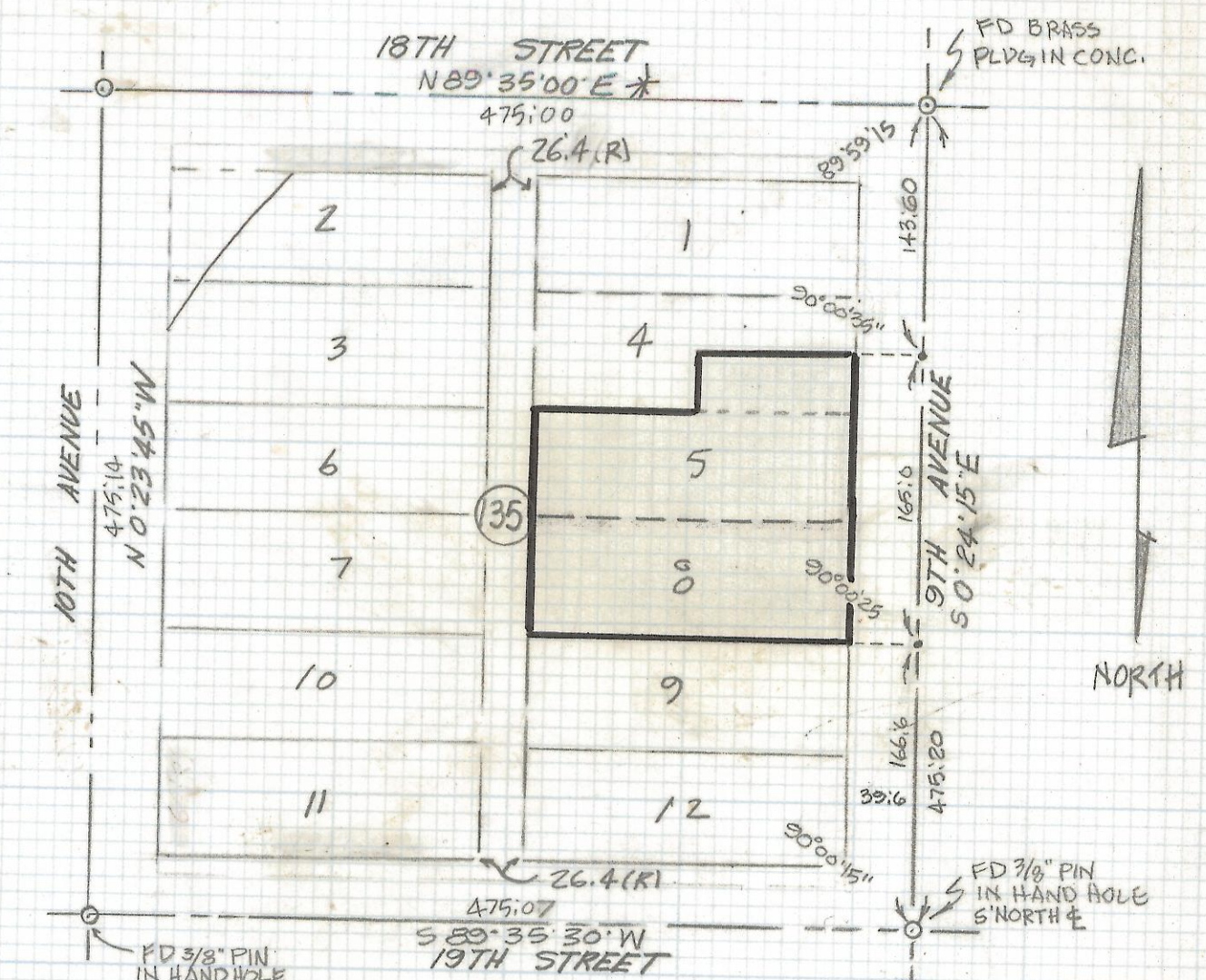
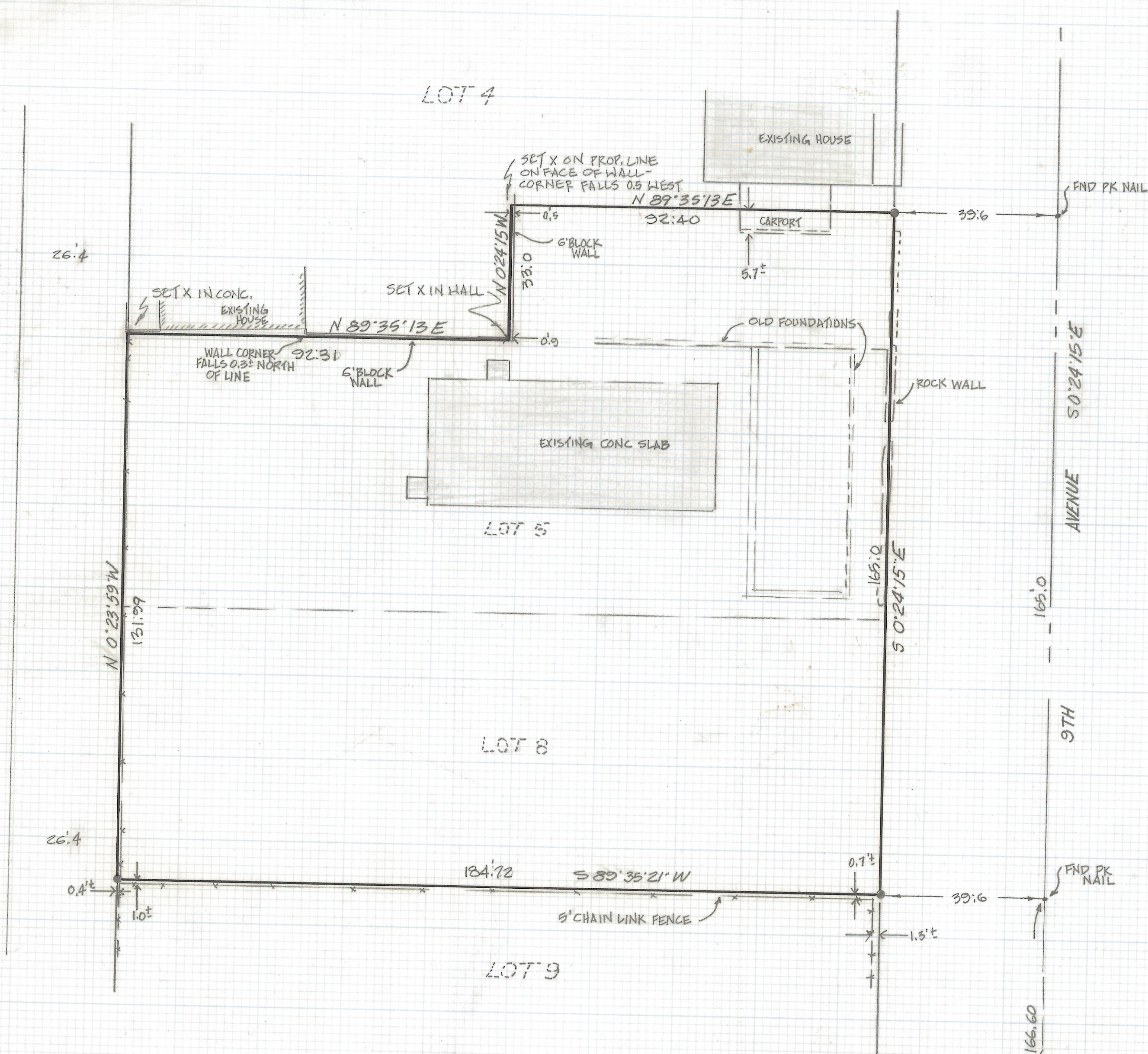


# **DISCLAIMER:**

**This unrecorded Record of Survey was donated to the City of Tucson. The City of Tucson provides this data for your personal use "as is." Additionally, the City of Tucson provides this information with the understanding that it is not guaranteed to be accurate, correct or complete and conclusions drawn from such information are the responsibility of the user.**



SCALE 1" = 100'  
 LOCATION MAP  
 BLOCK 135 CITY OF TUCSON  
 BOOK 3 PAGE 70 PIMA COUNTY

**NOTES**

- (1) \* INDICATES FD 1/2" PIN MKD LS 4786 UNLESS NOTED
- (2) M- MEASURED
- (3) R- MAP OR DEED RECORD
- (4) SEE SURVEY BY WALKER ENGINEERING CO. DATED SEPTEMBER, 1976
- (5) BLOCK 135 FROM S.W FOREMAN'S ORIGINAL SURVEY AND PLATTED IN BOOK 3 PAGE 70 AND 71 OF MAPS AND PLATS
- (6) \* BASIS OF BEARINGS N 89° 35' 00" E CENTERLINE 18TH STREET PER PLAN NO R-69-8 CITY OF TUCSON

**RESULTS OF SURVEY**

OF LOTS 5, 8, AND THE SOUTH 33.0 FEET OF THE EAST 92.40 FEET OF LOT 4, BLOCK 135, CITY OF TUCSON AS RECORDED IN BOOK 2 OF MAPS AND PLATS AT PAGE 4, IN THE OFFICE OF THE PIMA COUNTY RECORDER, PIMA COUNTY ARIZONA  
 SEE NOTE #5



ROBERT F. MELLEN  
 REGISTERED LAND SURVEYOR  
 TUCSON, ARIZONA  
 JOB #89-117

(REVISED) BEARINGS

Z-2018-147