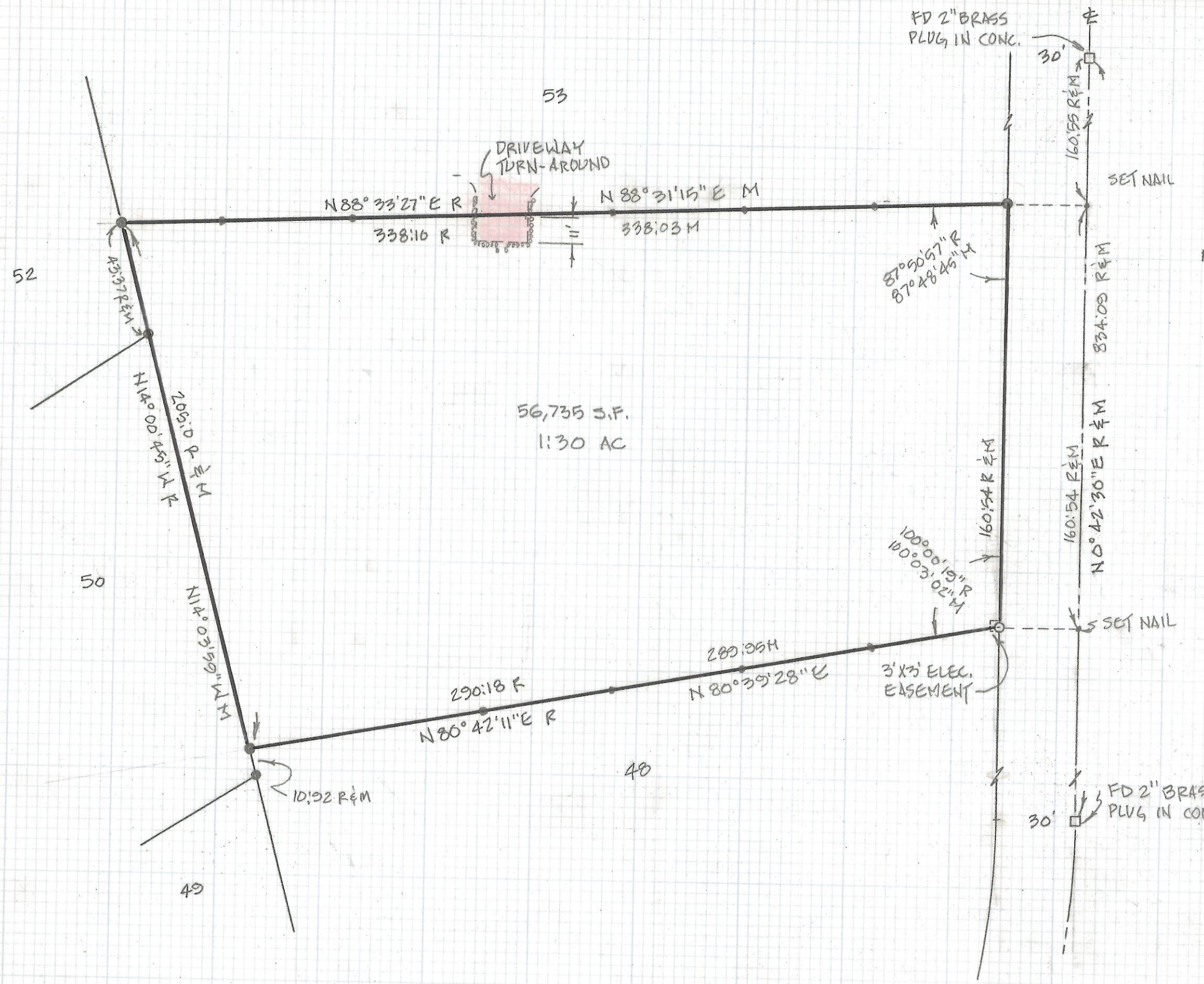


DISCLAIMER:

This unrecorded Record of Survey was donated to the City of Tucson. The City of Tucson provides this data for your personal use "as is." Additionally, the City of Tucson provides this information with the understanding that it is not guaranteed to be accurate, correct or complete and conclusions drawn from such information are the responsibility of the user.




- NOTES:**
- 1) ◊ INDICATES 1/2" PIN MKD. LS 4680 SET
 - 2) ● INDICATES 1/2" PIN MKD. PE 2201 FOUND
 - 3) R - MAPOR DEED RECORD
 - 4) M - MEASURED
 - 5) † INDICATES SET NAIL ON LINE

RESULTS OF SURVEY
 OF LOT 51 OF ROCKING K RANCH ESTATES II
 AS SHOWN IN BOOK 32 OF MAPS AND PLATS
 AT PAGE 18 IN THE OFFICE OF THE PIMA
 COUNTY RECORDER, PIMA COUNTY, ARIZONA.



2-2018-148

REVISIONS		DATE
		DATE: 11-16-89
		DR BY: GM. CK BY: RFM
ROBERT F. MELLEN REGISTERED LAND SURVEYOR 1250 W. MOHAVE ST. TUCSON, ARIZONA (602) 888-1012		JOB NO. 89-119
SCALE: 1" = 40'		SHEET 1 OF 1