

# **DISCLAIMER:**

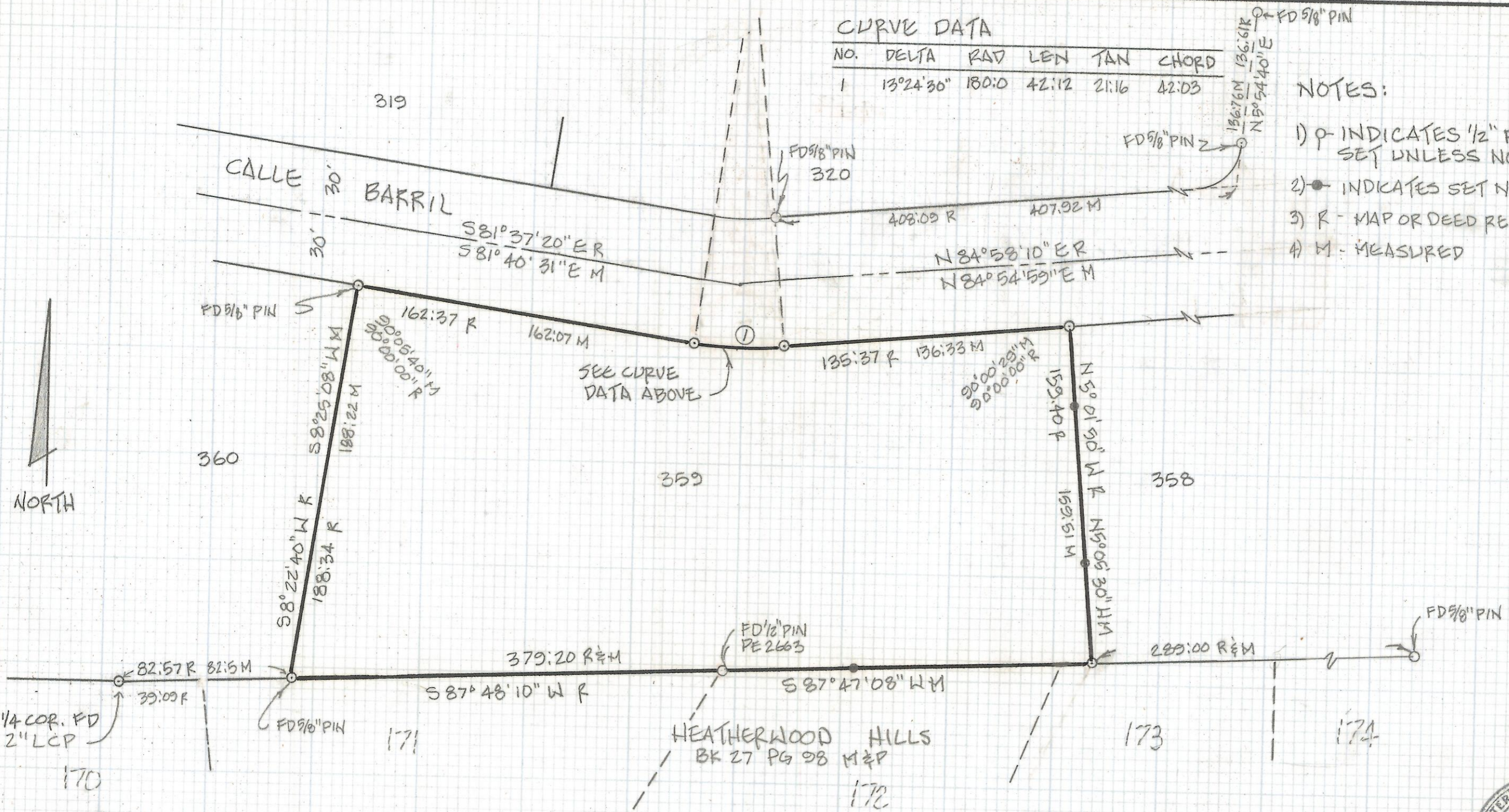
**This unrecorded Record of Survey was donated to the City of Tucson. The City of Tucson provides this data for your personal use "as is." Additionally, the City of Tucson provides this information with the understanding that it is not guaranteed to be accurate, correct or complete and conclusions drawn from such information are the responsibility of the user.**

**CURVE DATA**

NO.	DELTA	RAD	LEN	TAN	CHORD
1	13°24'30"	180:0	42:12	21:16	42:03

**NOTES:**

- 1) P INDICATES 1/2" PIN MKD LS 4680 SET UNLESS NOTED
- 2) ● INDICATES SET NAIL ON LINE
- 3) R - MAP OR DEED RECORD
- 4) M - MEASURED



**RESULTS OF SURVEY**

OF LOT 359 OF FLECHA CAIDA RANCH ESTATES NO. 6 AS SHOWN IN BOOK 13 OF MAPS AND PLATS AT PAGE 82 IN THE OFFICE OF THE PIMA COUNTY RECORDER, PIMA COUNTY, ARIZONA.



Z-2018-150

<b>RFM</b>	ROBERT F. MELLEN		REVISIONS		DATE
	REGISTERED LAND SURVEYOR 1250 W. MONAVE ST. TUCSON, ARIZONA (602) 888-1012		DATE: 11-21-89		DRBY: GM. CRBY: RFM
			JOB NO. 89-121		SCALE: 1" = 50'
			SHEET 1 OF 1		