

# **DISCLAIMER:**

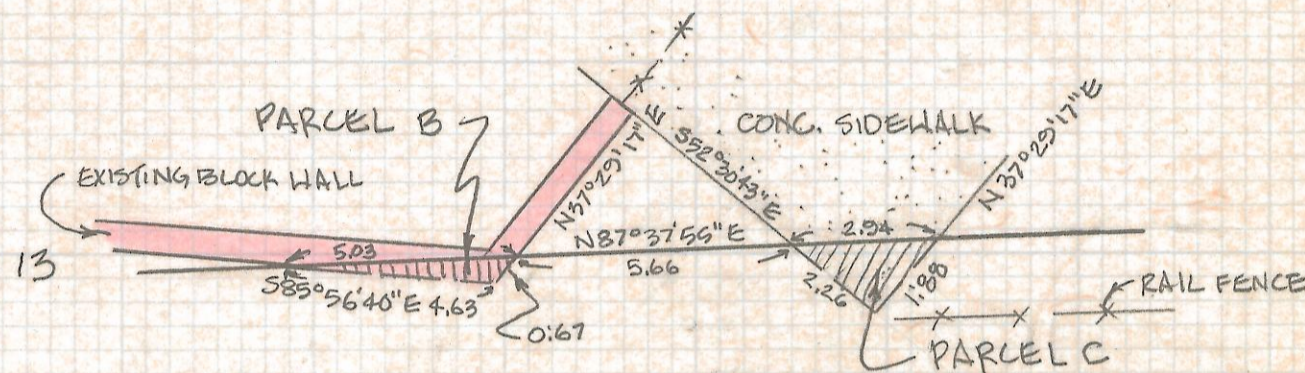
**This unrecorded Record of Survey was donated to the City of Tucson. The City of Tucson provides this data for your personal use "as is." Additionally, the City of Tucson provides this information with the understanding that it is not guaranteed to be accurate, correct or complete and conclusions drawn from such information are the responsibility of the user.**

UNSUBDIVIDED

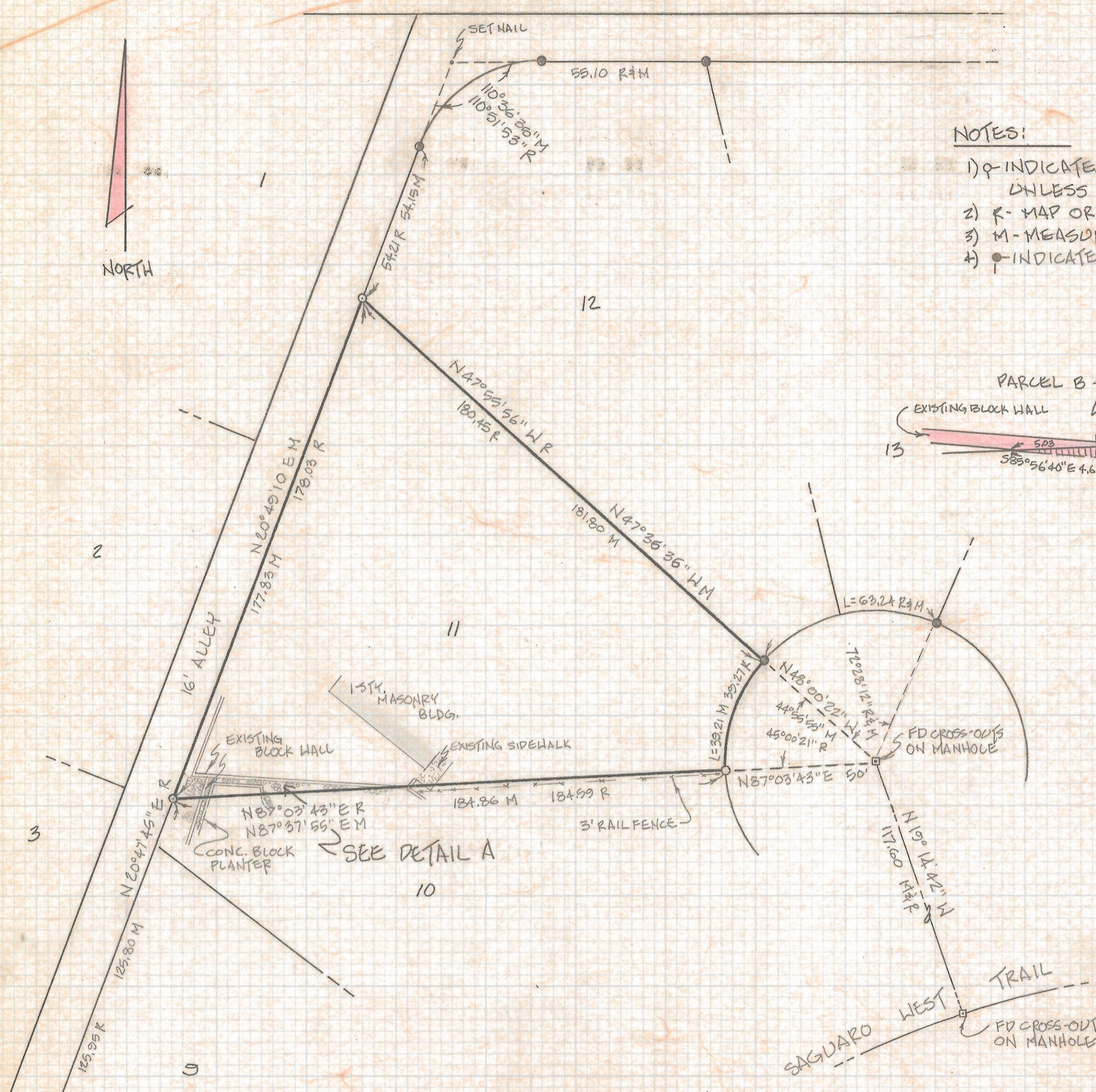


**NOTES:**

- 1)  $\circ$  INDICATES 1/2" PIN MKD LS 4680 SET UNLESS NOTED
- 2)  $\leftarrow$  MAP OR DEED RECORD
- 3) M - MEASURED
- 4)  $\bullet$  INDICATES FD STEEL PIN

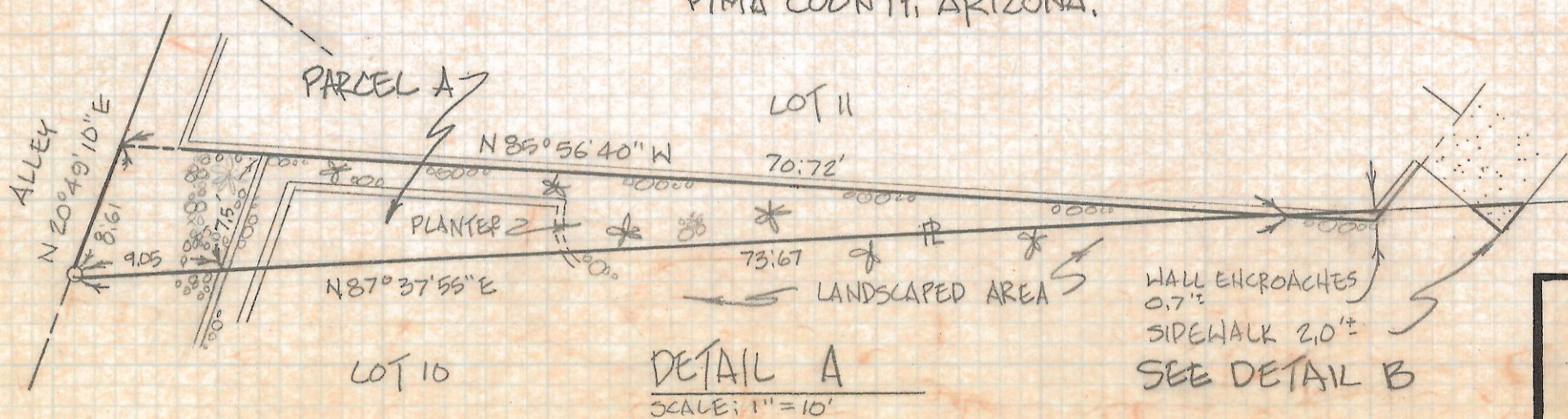


**DETAIL B**  
1" = 4'



**RESULTS OF SURVEY**

OF LOT 11 OF JAGUAR WEST ESTATES AS SHOWN IN BOOK 23 OF MAPS AND PLATS AT PAGE 27 IN THE OFFICE OF THE PIMA COUNTY RECORDER, PIMA COUNTY, ARIZONA.



**DETAIL A**  
SCALE: 1" = 10'



Z-2018-151

REVISIONS	DATE
PARCELS A,B,C	12-1-89

<b>RFM</b>	ROBERT F. MELLEN	DATE: 11-27-89
	REGISTERED LAND SURVEYOR	DRAWN BY: G.M. CHECKED BY: R.F.M.
	1250 W. MOHAVE ST. TUCSON, ARIZONA	JOB NO. 89-123
(602) 888-1012	SCALE: 1" = 30'	SHEET 1 OF 1