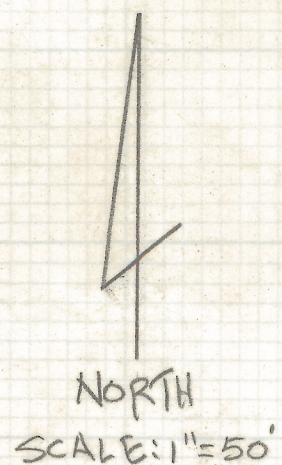
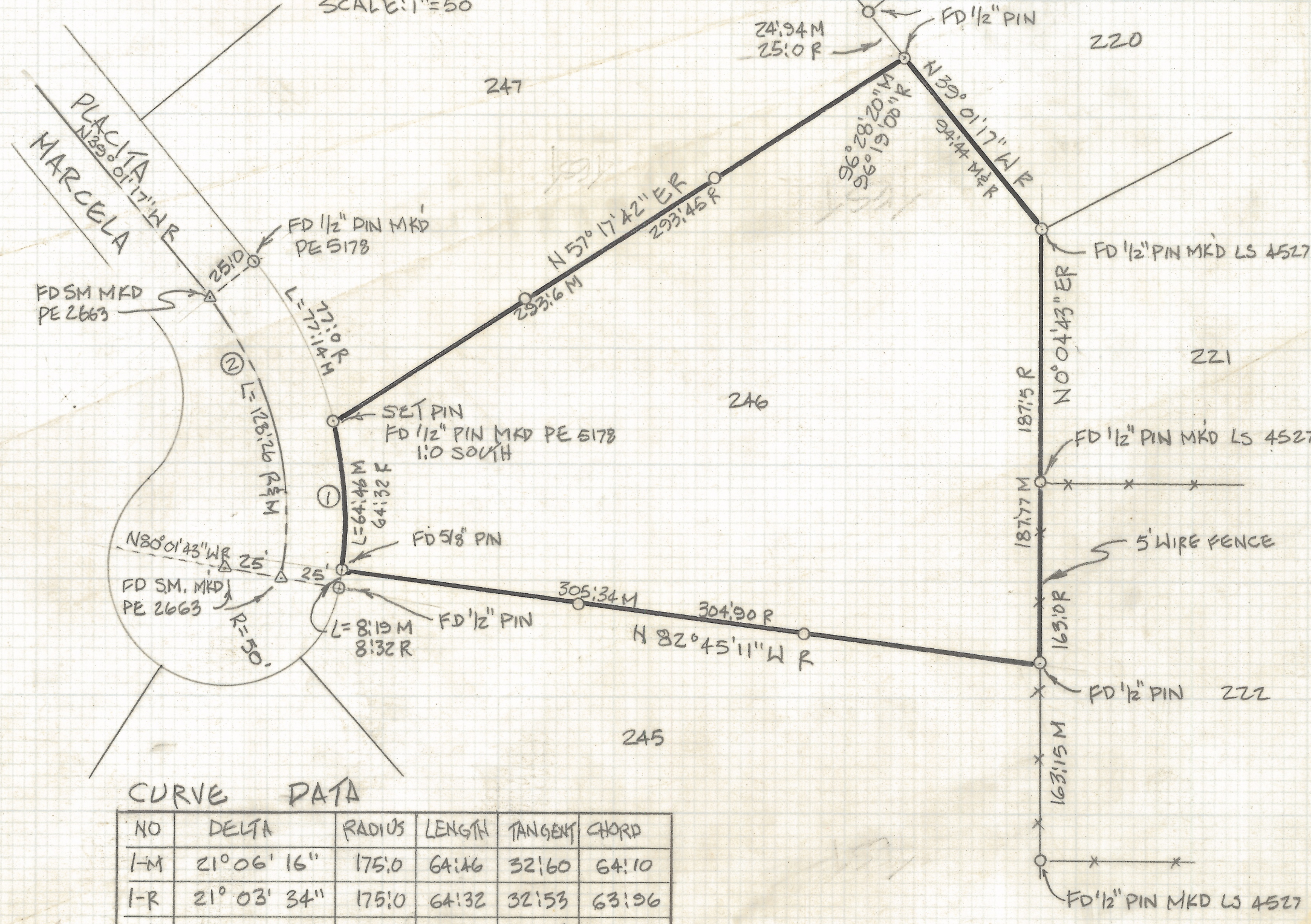


DISCLAIMER:

This unrecorded Record of Survey was donated to the City of Tucson. The City of Tucson provides this data for your personal use "as is." Additionally, the City of Tucson provides this information with the understanding that it is not guaranteed to be accurate, correct or complete and conclusions drawn from such information are the responsibility of the user.

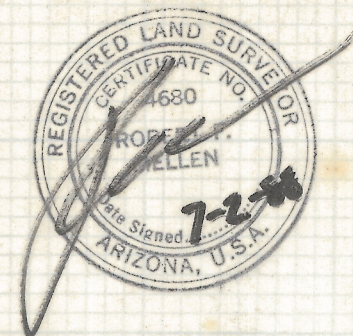


- NOTES:
- (1) Q-INDICATES 1/2" PIN MKD LS 4680 SET UNLESS NOTED
 - (2) R- MAP OR DEED RECORD
 - (3) M- MEASURED



RESULTS OF SURVEY

OF LOT 246 OF RANCHO DEL SOL LINDO AS RECORDED IN BOOK 25 OF MAPS AND PLATS AT PAGE 47 IN THE OFFICE OF THE PIMA COUNTY RECORDER, PIMA COUNTY, ARIZONA.



CURVE DATA

NO	DELTA	RADIUS	LENGTH	TANGENT	CHORD
I-M	21° 06' 16"	175.0	64.146	32.160	64.10
I-R	21° 03' 34"	175.0	64.132	32.153	63.96
ZR-M	48° 59' 34"	150.0	128.26	68.35	124.39

ROBERT F. MELLEN
REGISTERED LAND SURVEYOR
TUCSON, ARIZONA
JOB 88-82

Z-2018-163