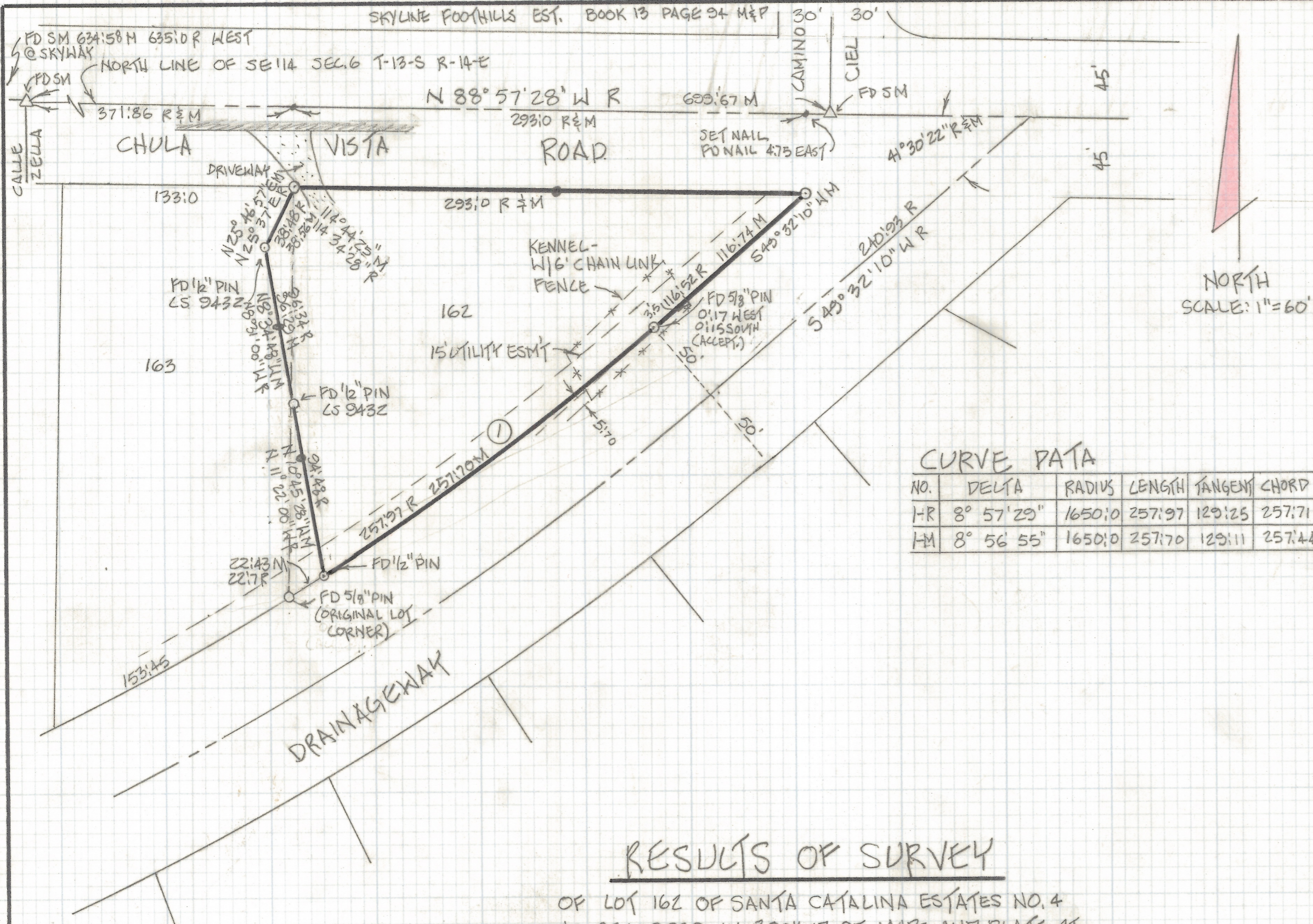


# **DISCLAIMER:**

**This unrecorded Record of Survey was donated to the City of Tucson. The City of Tucson provides this data for your personal use "as is." Additionally, the City of Tucson provides this information with the understanding that it is not guaranteed to be accurate, correct or complete and conclusions drawn from such information are the responsibility of the user.**



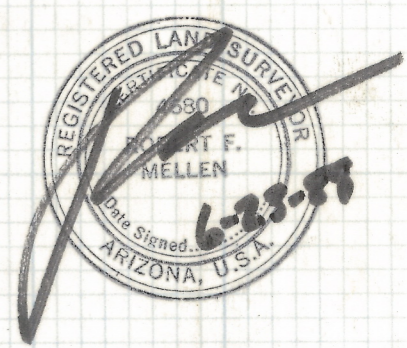
- NOTES:
- (1) ◊ INDICATES 1/2" PIN MKD LS 4680 SET UNLESS NOTED
  - (2) R - MAP OR DEED RECORD
  - (3) M - MEASURED
  - (4) BASIS OF BEARINGS N 88° 57' 28" W SAID BEARING BEING THE NORTH LINE OF THE SOUTHEAST QUARTER OF SECTION 6 T-13-S, R-14-E, G & S R B & M, PIMA CO., ARIZONA.
  - (5) ◊ INDICATES SET NAIL ON LINE

CURVE DATA

NO.	DELTA	RADIUS	LENGTH	TANGENT	CHORD
H-R	8° 57' 29"	1650.10	257.97	129.25	257.71
H-M	8° 56' 55"	1650.10	257.70	129.11	257.44

RESULTS OF SURVEY

OF LOT 162 OF SANTA CATALINA ESTATES NO. 4 AS RECORDED IN BOOK 17 OF MAPS AND PLATS AT PAGE 17 IN THE OFFICE OF THE PIMA COUNTY RECORDER, PIMA COUNTY, ARIZONA.



ROBERT F. MELLEN  
 REGISTERED LAND SURVEYOR  
 TUCSON, ARIZONA  
 JOB 88-89

Z-2018-166