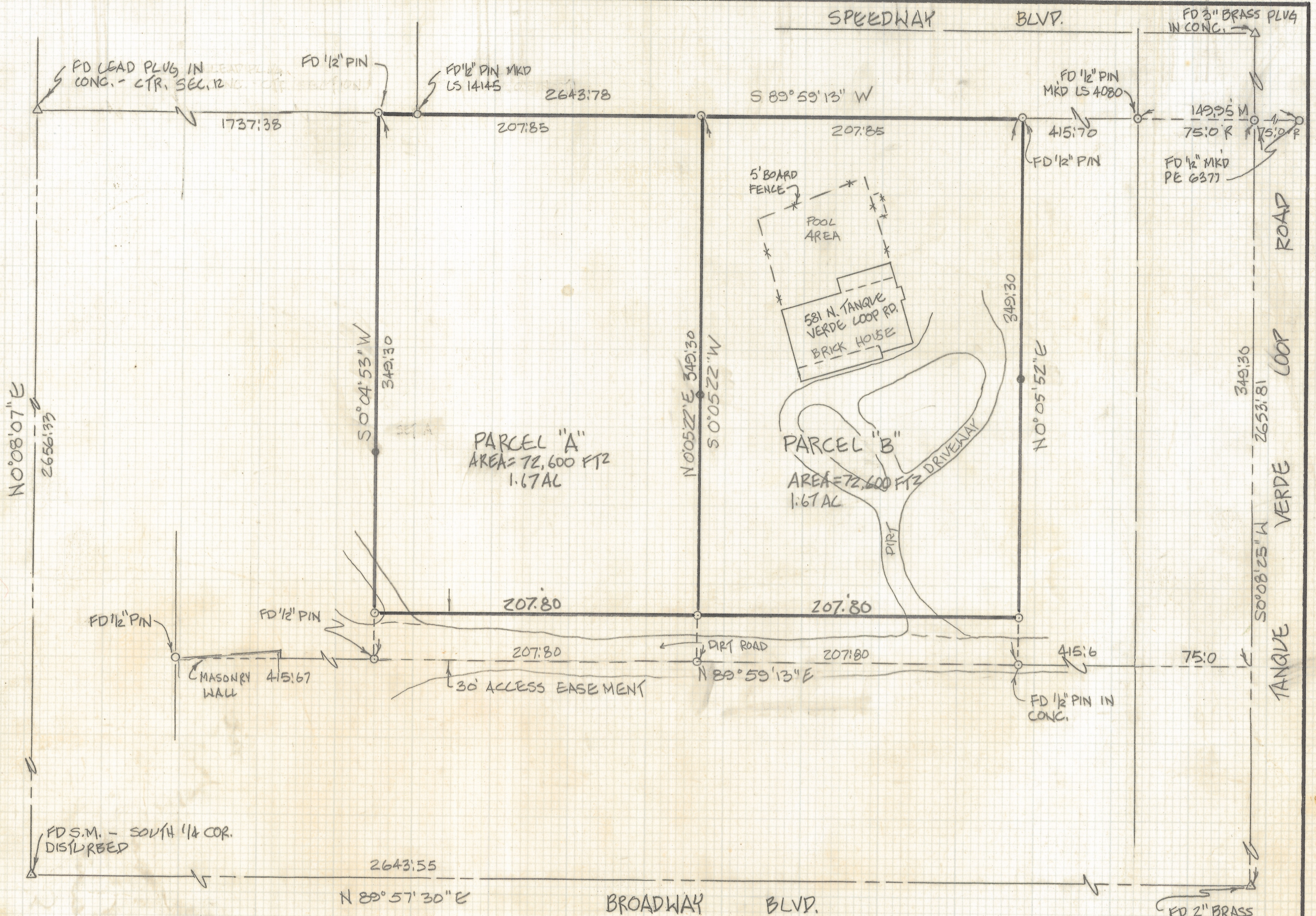


DISCLAIMER:

This unrecorded Record of Survey was donated to the City of Tucson. The City of Tucson provides this data for your personal use "as is." Additionally, the City of Tucson provides this information with the understanding that it is not guaranteed to be accurate, correct or complete and conclusions drawn from such information are the responsibility of the user.

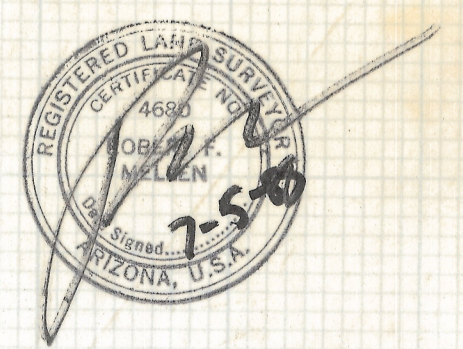


NOTES:

- (1) ♀ INDICATES 1/2" PIN MKD LS 4680 SET UNLESS NOTED
- (2) R - MAP OR DEED RECORD
- (3) M - MEASURED
- (4) BASIS OF BEARINGS S 89° 59' 13" W. SAID BEARING BEING THE NORTH LINE OF THE SUBJECT PARCEL PER DOCKET BOOK 5821 PG. 286.
- (5) ♀ INDICATES 1/2" PIN SET ON PROPERTY LINE

RESULTS OF SURVEY

OF A PORTION OF THE NORTHEAST QUARTER OF THE SOUTHEAST QUARTER OF SECTION 12 OF TOWNSHIP 14 SOUTH OF RANGE 15 EAST, GILA AND SALT RIVER BASE AND MERIDIAN, PIMA COUNTY, ARIZONA.



Z-2018-167
REVISED BEARING 6-15-88

ROBERT F. MELLEN
REGISTERED LAND SURVEYOR
TUCSON, ARIZONA
JOB 88-90