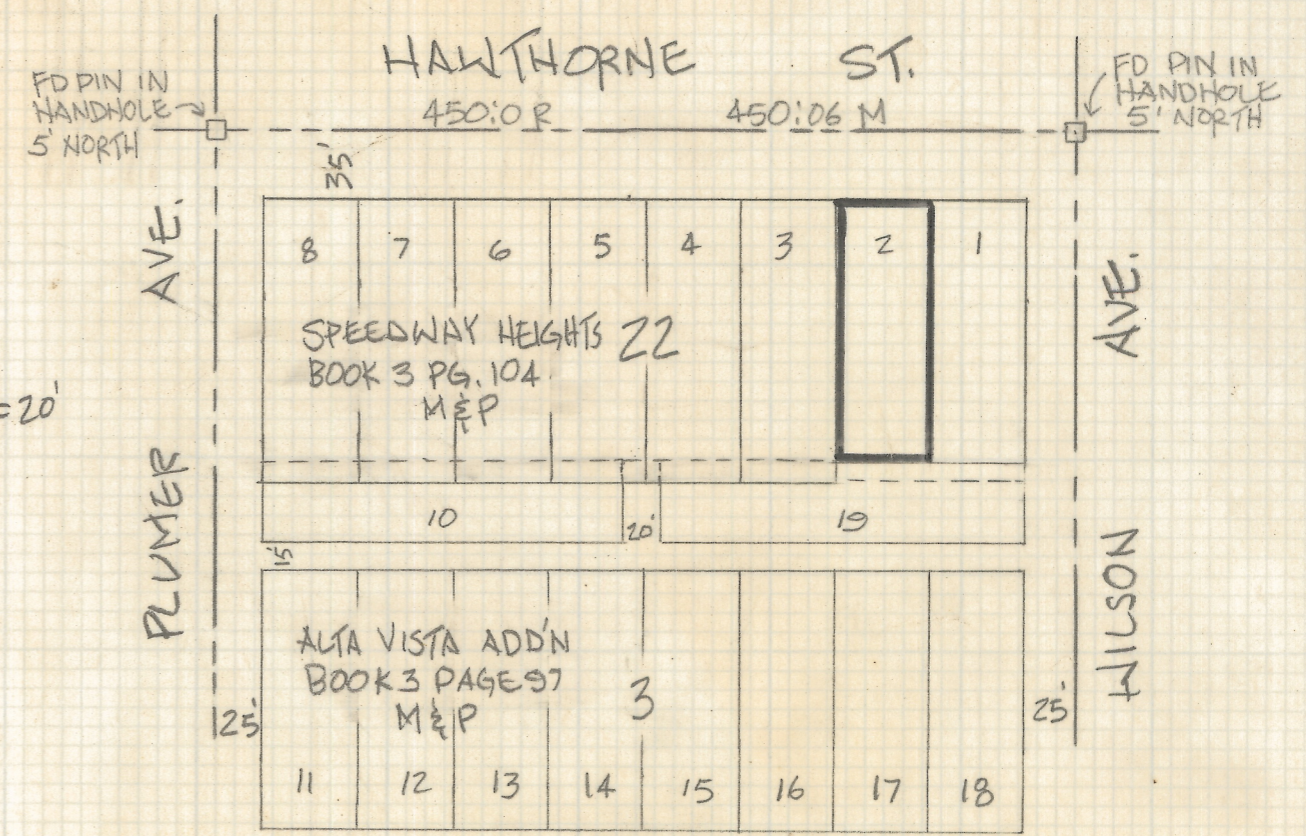
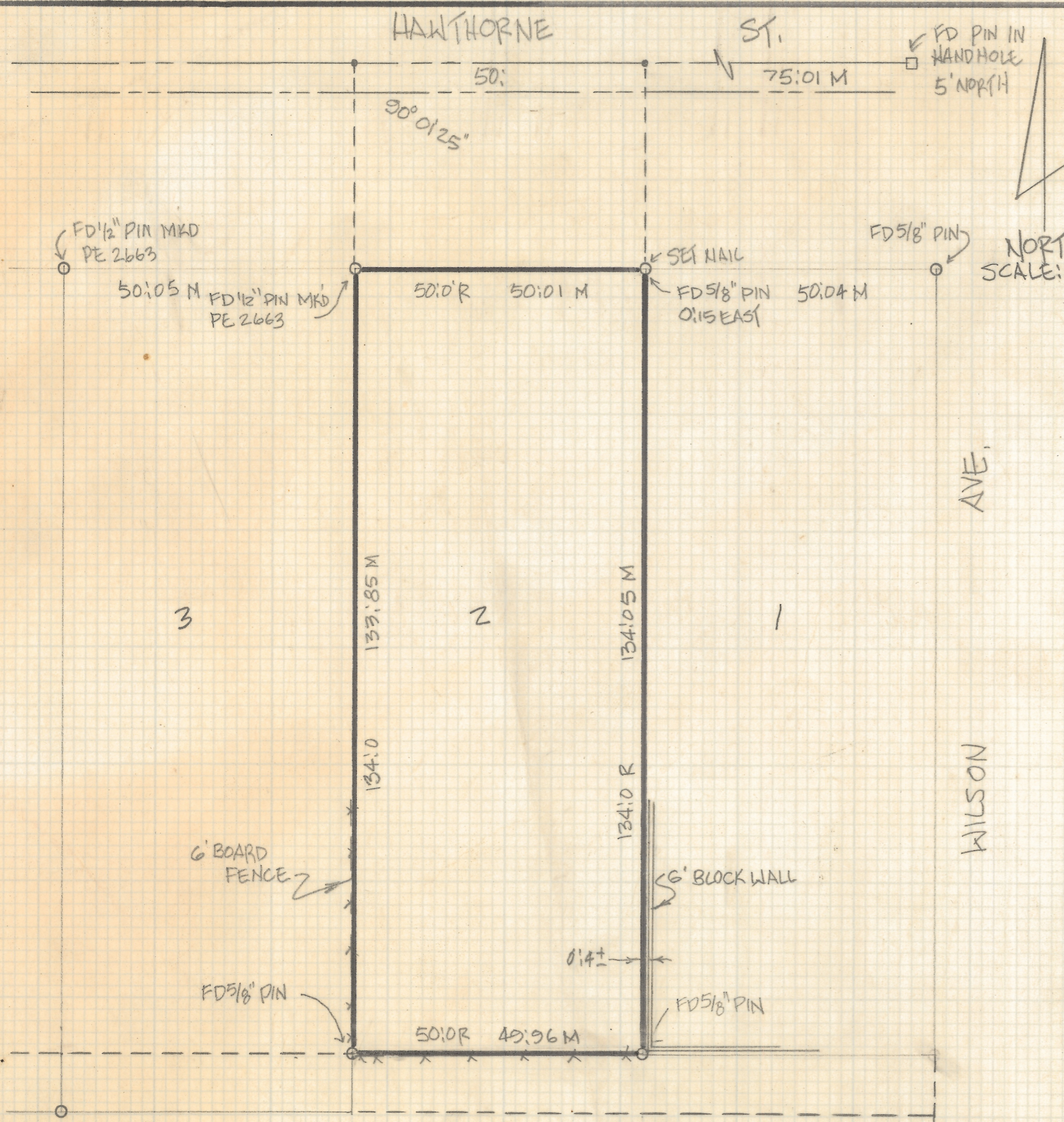


DISCLAIMER:

This unrecorded Record of Survey was donated to the City of Tucson. The City of Tucson provides this data for your personal use "as is." Additionally, the City of Tucson provides this information with the understanding that it is not guaranteed to be accurate, correct or complete and conclusions drawn from such information are the responsibility of the user.

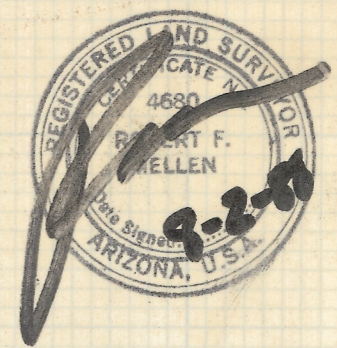


LOCATION MAP
SCALE: 1" = 100'

RESULTS OF SURVEY

OF THE NORTH 134 FEET OF LOT 2 OF BLOCK 22 OF SPEEDWAY HEIGHTS AS RECORDED IN BOOK 3 OF MAPS AND PLATS AT PAGE 103 IN THE OFFICE OF THE PIMA COUNTY RECORDER, PIMA COUNTY, ARIZONA.

- NOTES!
- (1) Ø - INDICATES 1/2" PIN MKD LS 4680 SET UNLESS NOTED
 - (2) R - MAP OR PEED RECORD
 - (3) M - MEASURED



ROBERT F. MELLEN
REGISTERED LAND SURVEYOR
TUCSON, ARIZONA
JOB 88-98

Z-2018-170