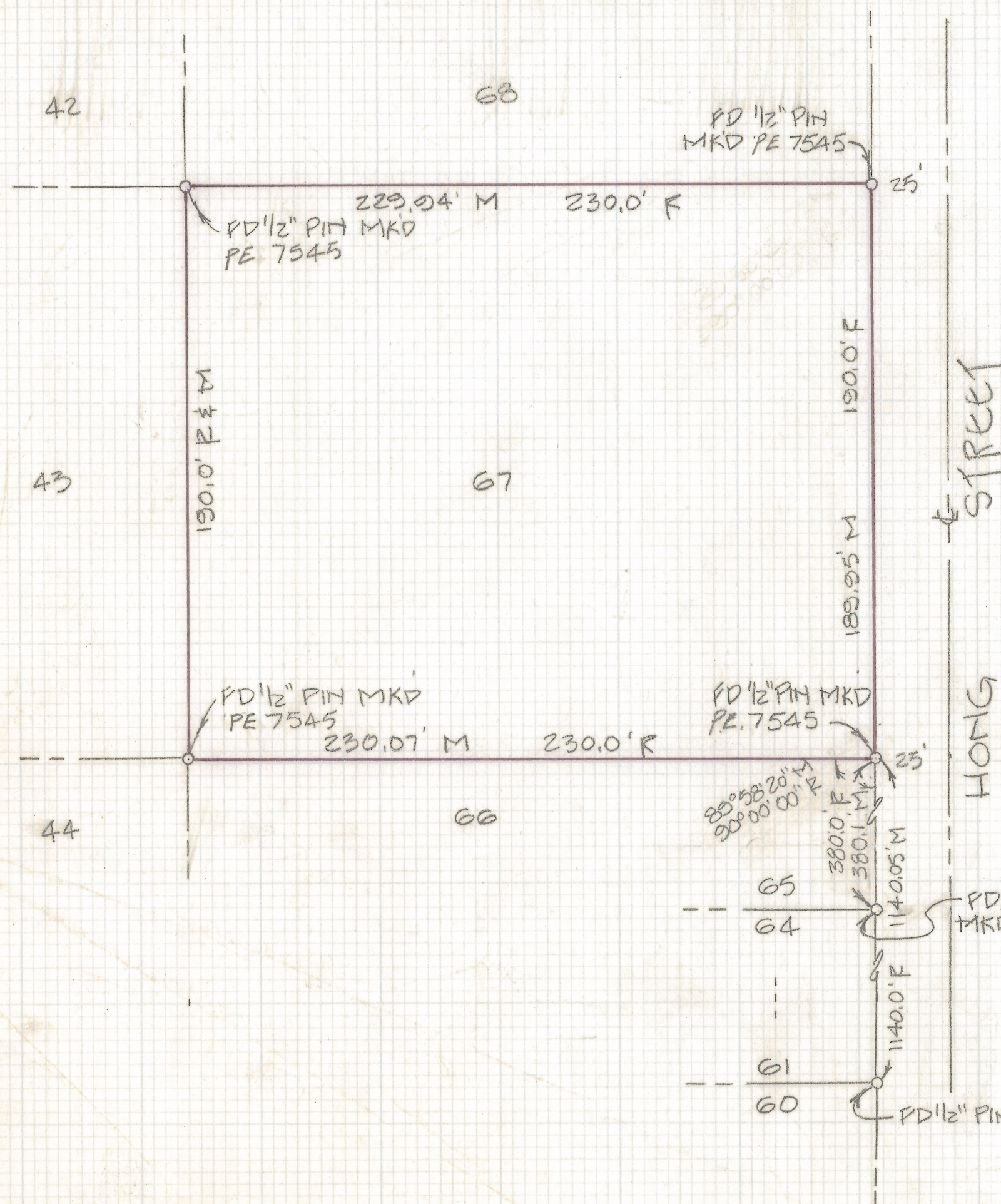
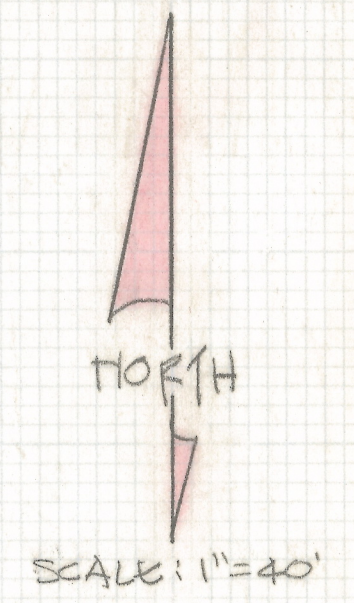


DISCLAIMER:

This unrecorded Record of Survey was donated to the City of Tucson. The City of Tucson provides this data for your personal use "as is." Additionally, the City of Tucson provides this information with the understanding that it is not guaranteed to be accurate, correct or complete and conclusions drawn from such information are the responsibility of the user.



NOTES:
 (1) R - MAP OR DEED RECORD
 (2) M - MEASURED



RESULTS OF SURVEY

OF LOT 67 OF SILVERBELL WEST SUBDIVISION AS RECORDED IN BOOK 24 OF MAPS AND PLATS AT PAGE 70 IN THE OFFICE OF THE PIMA COUNTY RECORDER, PIMA COUNTY, ARIZONA.



ROBERT P. MELLEN
 REGISTERED LAND SURVEYOR
 TUCSON, ARIZONA
 JOB# 86-2

Z-2018-172