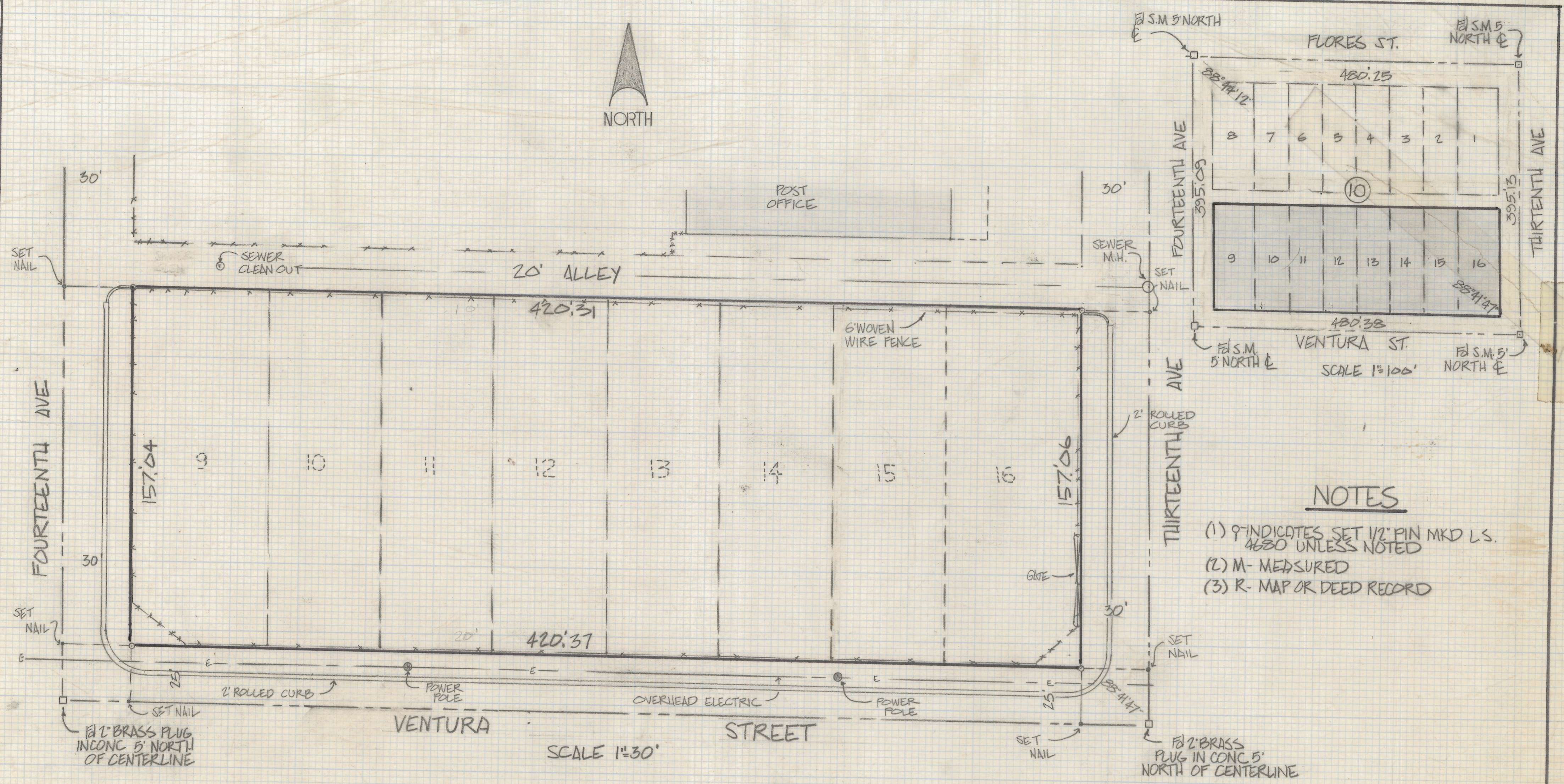
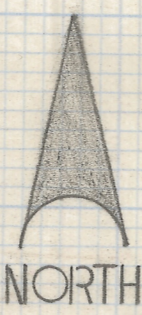


# **DISCLAIMER:**

**This unrecorded Record of Survey was donated to the City of Tucson. The City of Tucson provides this data for your personal use "as is." Additionally, the City of Tucson provides this information with the understanding that it is not guaranteed to be accurate, correct or complete and conclusions drawn from such information are the responsibility of the user.**



**NOTES**

- (1) 9 INDICATES SET 1/2" PIN MKD L.S. 4680 UNLESS NOTED
- (2) M - MEASURED
- (3) R - MAP OR DEED RECORD

**RESULTS OF SURVEY**

OF LOTS 9 THRU 16 BLOCK 10 EL SAHVARO ADDITION  
 RECORDED IN BOOK 6 OF MAPS AND PLATS AT PAGE 74 IN THE  
 OFFICE OF THE PIMA COUNTY, RECORDER PIMA COUNTY  
 ARIZONA



ROBERT F. MELLEN  
 REGISTERED LAND SURVEYOR  
 TUCSON, ARIZONA  
 JOB # 86-3