

DISCLAIMER:

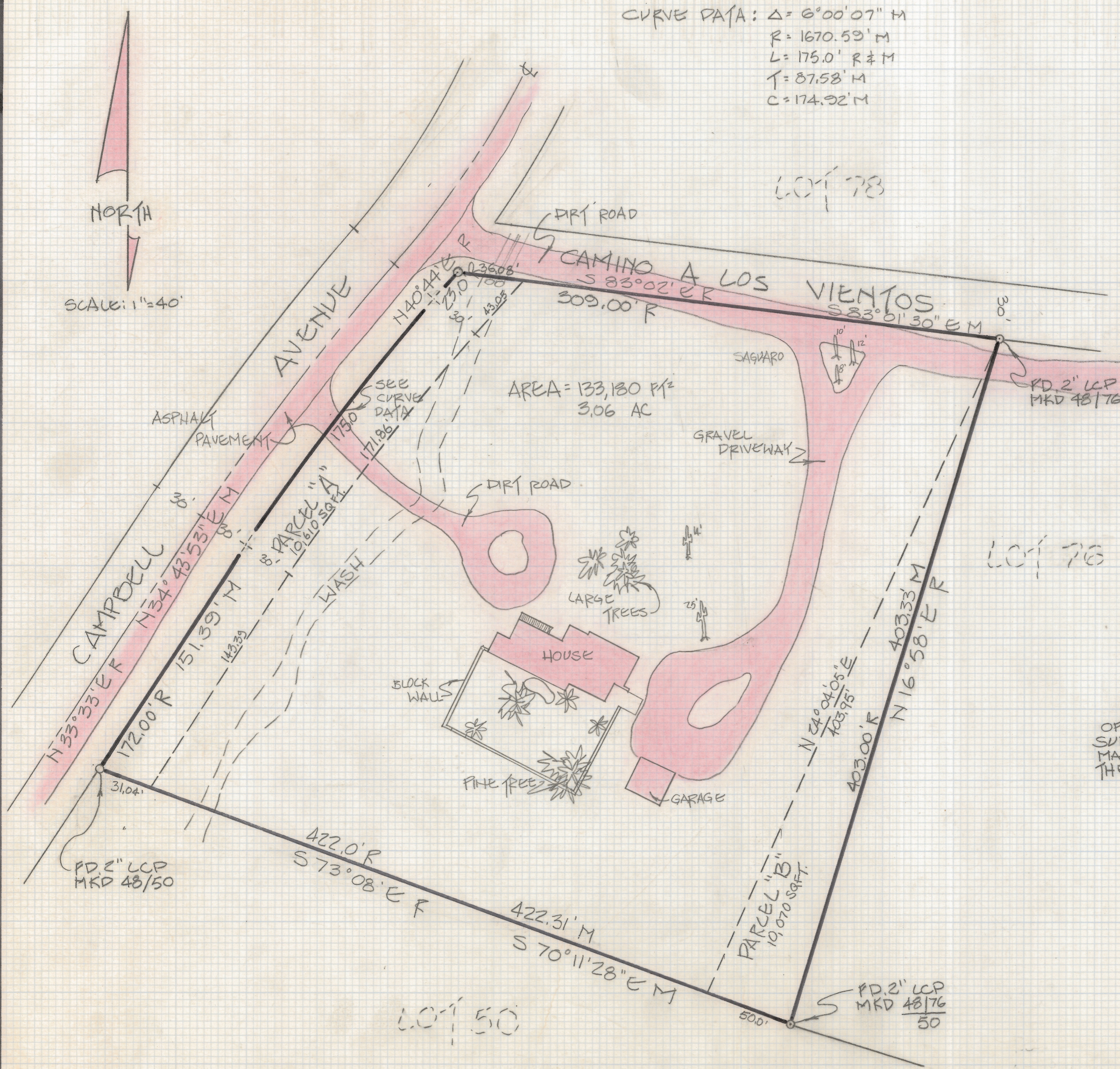
This unrecorded Record of Survey was donated to the City of Tucson. The City of Tucson provides this data for your personal use "as is." Additionally, the City of Tucson provides this information with the understanding that it is not guaranteed to be accurate, correct or complete and conclusions drawn from such information are the responsibility of the user.

CURVE DATA: $\Delta = 6^{\circ}00'07''$ M
 $R = 1670.59'$ M
 $L = 175.0'$ R & M
 $T = 87.58'$ M
 $C = 174.92'$ M

NOTES:

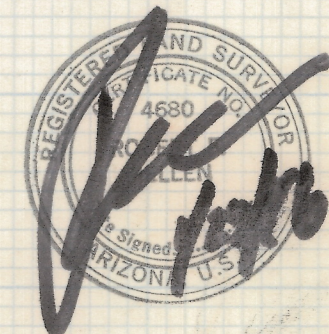
- (1) \circ INDICATES 1/2" PIN MKD LS 4680 SET UNLESS NOTED
- (2) R - MAP OR DEED RECORD
- (3) M - MEASURED

NORTH
 SCALE: 1"=40'



RESULTS OF SURVEY

OF LOT 48 OF CAJALUMA FOOTHILLS ESTATES SUBDIVISION AS RECORDED IN BOOK 6 OF MAPS AND PLATS AT PAGE 57 IN THE OFFICE OF THE PIMA COUNTY RECORDER, PIMA COUNTY, ARIZONA.



Z-2018-180
 REUSED PARCELS A & B 6-17-87

ROBERT P. MELLETT
 REGISTERED LAND SURVEYOR
 TUCSON, ARIZONA
 JOB # 86-16