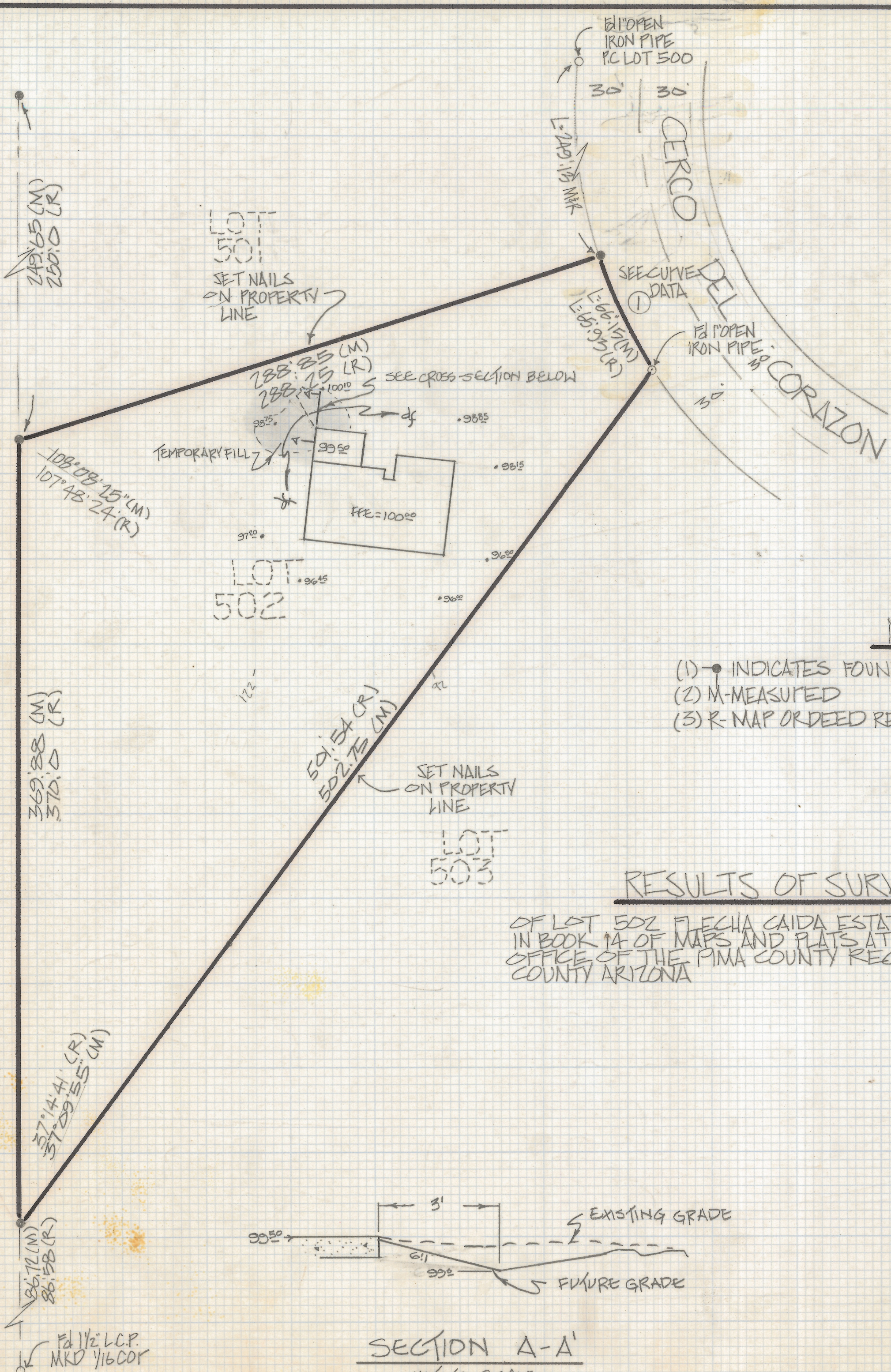


# **DISCLAIMER:**

**This unrecorded Record of Survey was donated to the City of Tucson. The City of Tucson provides this data for your personal use "as is." Additionally, the City of Tucson provides this information with the understanding that it is not guaranteed to be accurate, correct or complete and conclusions drawn from such information are the responsibility of the user.**



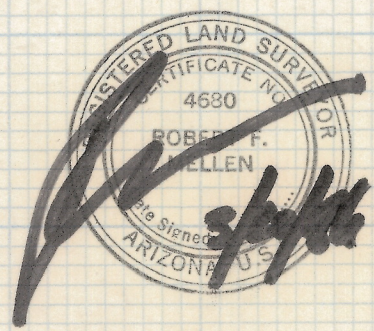
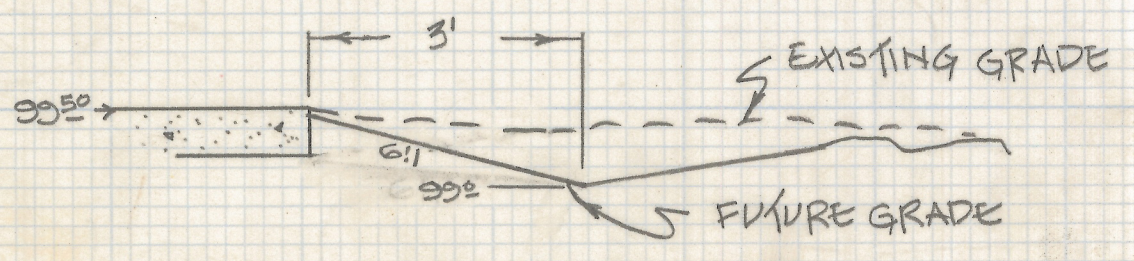
CURVE DATA					
Nº	RADIUS	DELTA	TANGENT	LENGTH	CHORD
①	222.38	170.240	33.32	66.15	65.91

NOTES

- (1) INDICATES FOUND 5/8" STEEL PIN
- (2) M-MEASURED
- (3) R-MAP OR DEED RECORD

RESULTS OF SURVEY

OF LOT 502 FLECHA CAIDA ESTATES #5 RECORDED IN BOOK 14 OF MAPS AND PLATS AT PAGE 44 IN THE OFFICE OF THE PIMA COUNTY RECORDER PIMA COUNTY ARIZONA



ROBERT F. MELLEN  
 REGISTERED LAND SURVEYOR  
 TUCSON, ARIZONA  
 JOB # 86-35