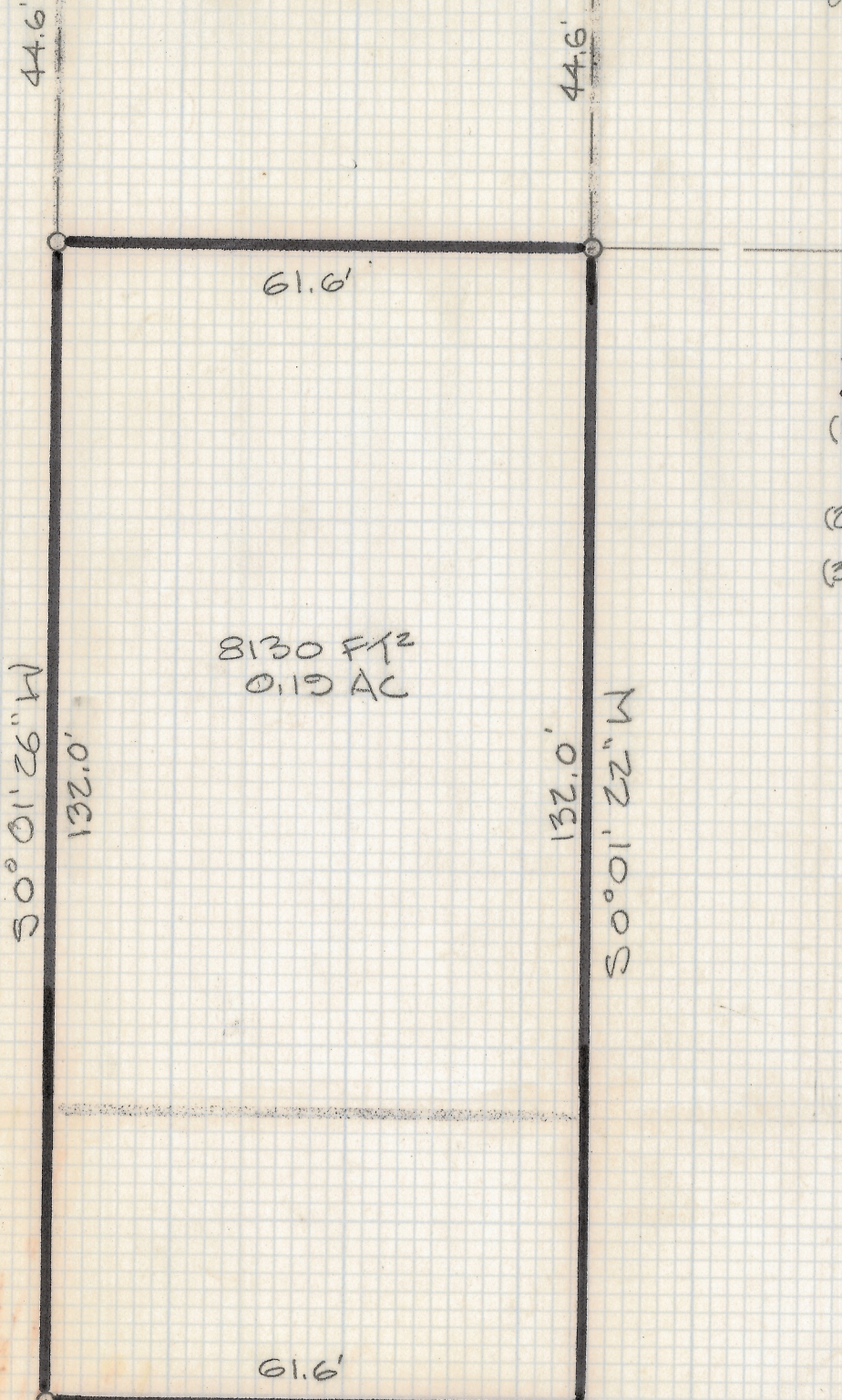
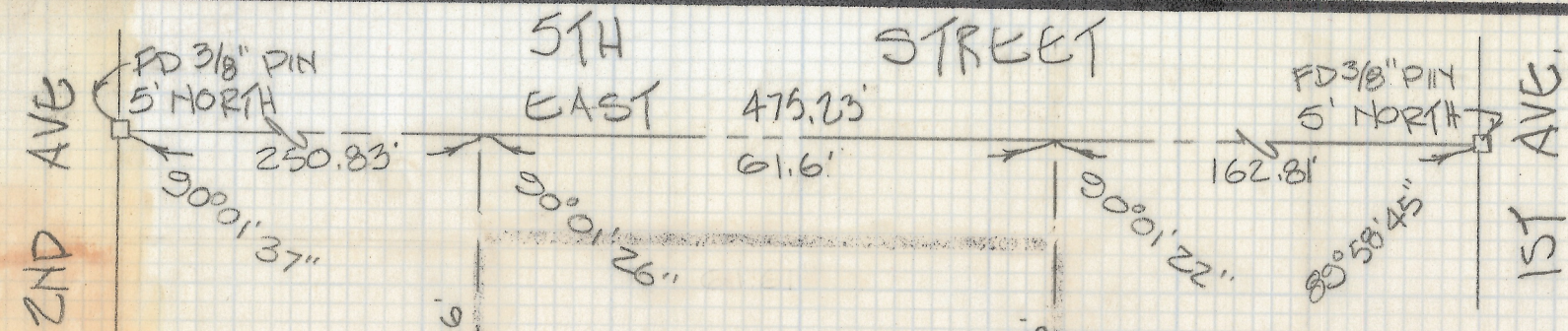


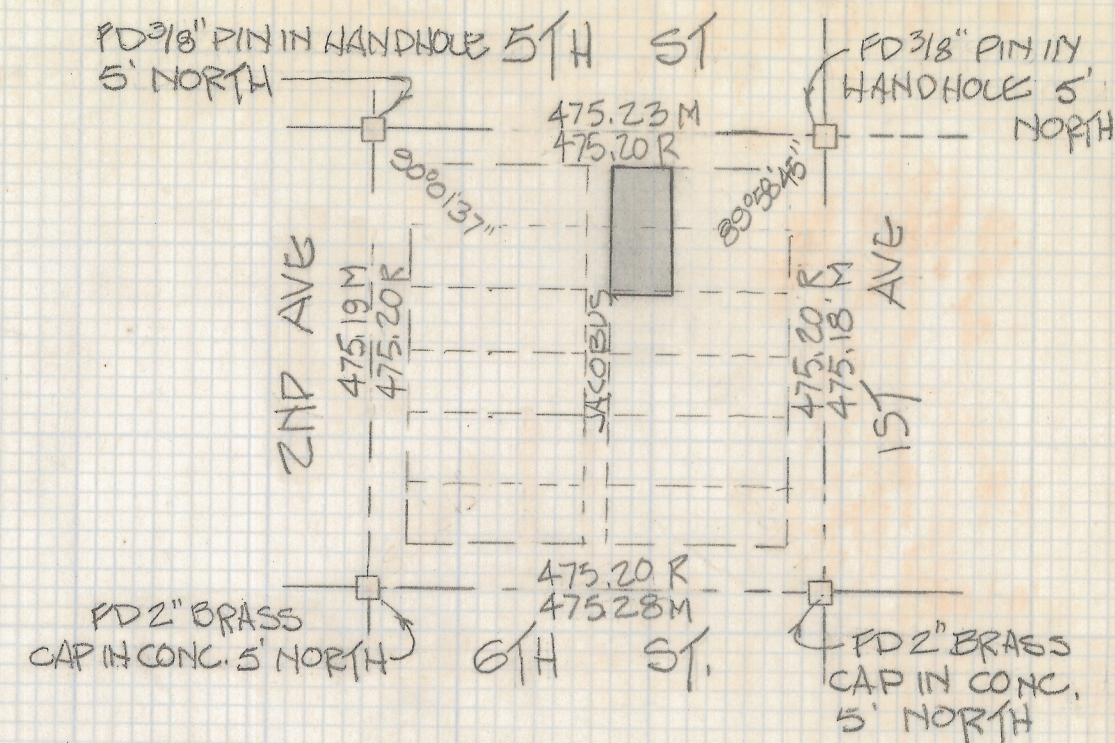
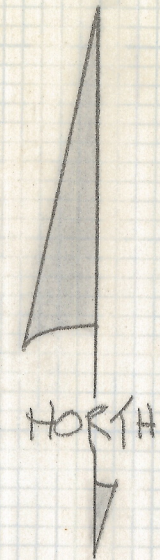
DISCLAIMER:

This unrecorded Record of Survey was donated to the City of Tucson. The City of Tucson provides this data for your personal use "as is." Additionally, the City of Tucson provides this information with the understanding that it is not guaranteed to be accurate, correct or complete and conclusions drawn from such information are the responsibility of the user.



NOTES:

- (1) \circ INDICATES 1/2" PIN MKD LS 4680 SET UNLESS NOTED
- (2) R - MAP OR DEED RECORD
- (3) M - MEASURED



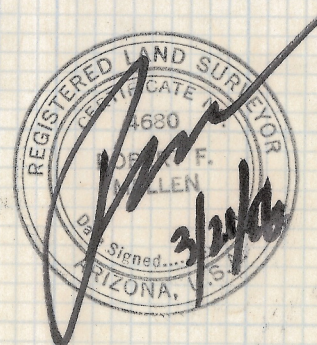
LOCATION MAP

SCALE: 1" = 200'

RESULTS OF SURVEY

OF A PORTION OF LOTS 3 AND 4 OF BLOCK 64 OF THE CITY OF TUCSON AS RECORDED IN BOOK 3 OF MAPS AND PLATS AT PAGE 70 AND 71 IN THE OFFICE OF THE PIMA COUNTY RECORDER, PIMA COUNTY, ARIZONA.

SCALE: 1" = 20'



Z-2018-192

ROBERT F. MELLEN
REGISTERED LAND SURVEYOR
TUCSON, ARIZONA
JOB 86-36