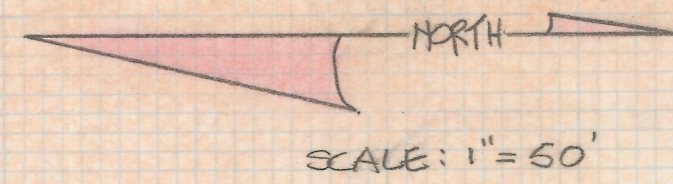
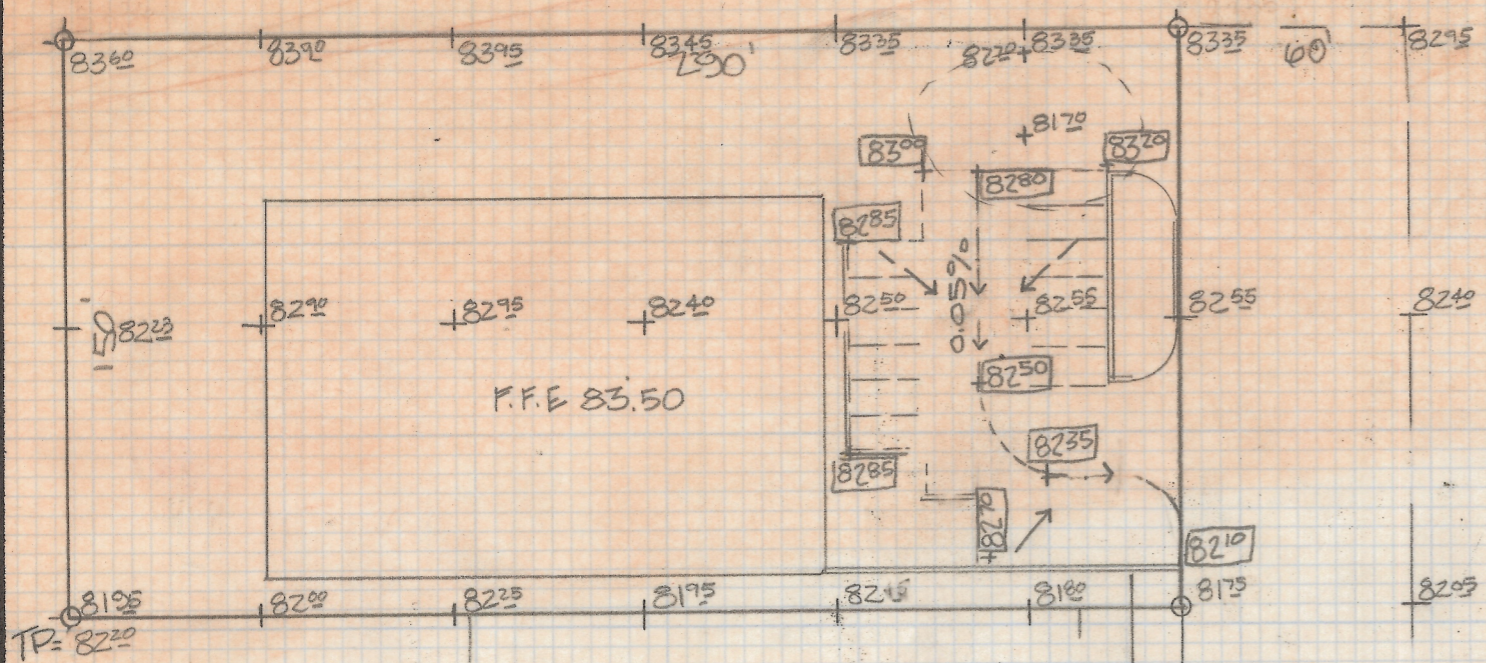


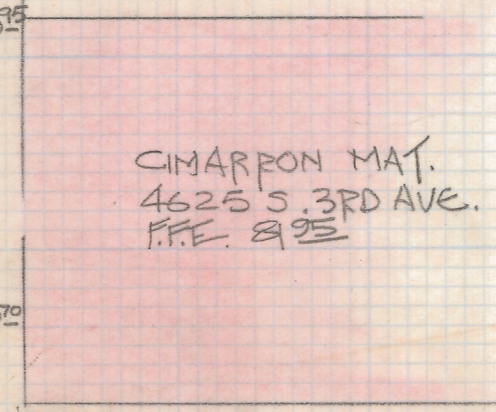
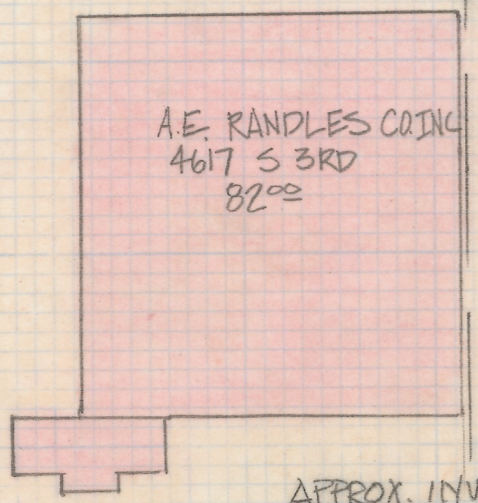
DISCLAIMER:

This unrecorded Record of Survey was donated to the City of Tucson. The City of Tucson provides this data for your personal use "as is." Additionally, the City of Tucson provides this information with the understanding that it is not guaranteed to be accurate, correct or complete and conclusions drawn from such information are the responsibility of the user.



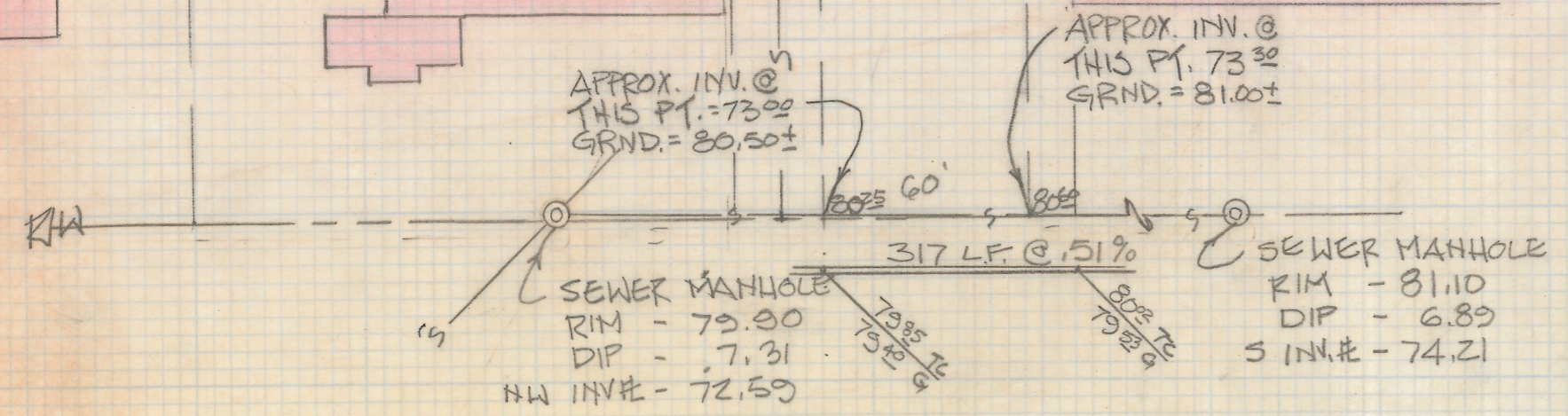
NOTE:
 (1) NOT A SURVEY - NO PINS SET
 (2) BENCH MARK - TOP OF EXISTING CURB GRADE - 2479.85
 COJ. PLAN NO. J-71-14 SH 2 OF 2

FOLYPORE INC.
 4601 S. 3RD AVE



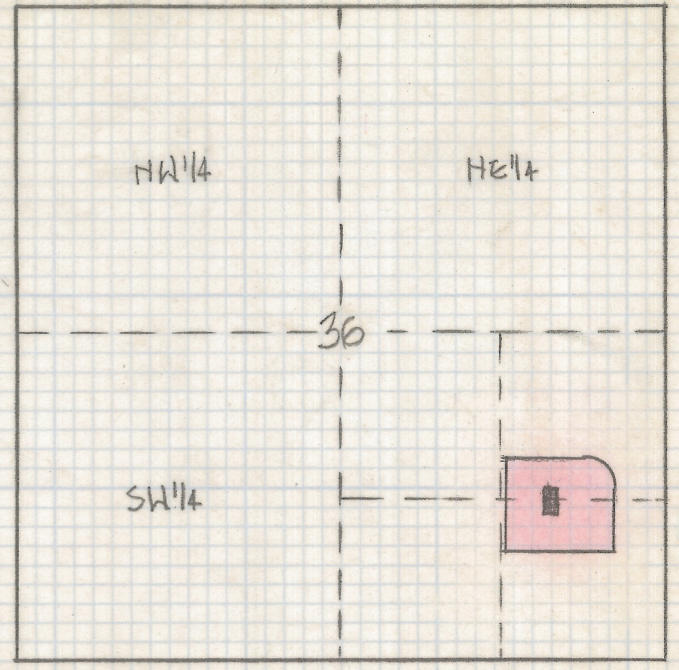
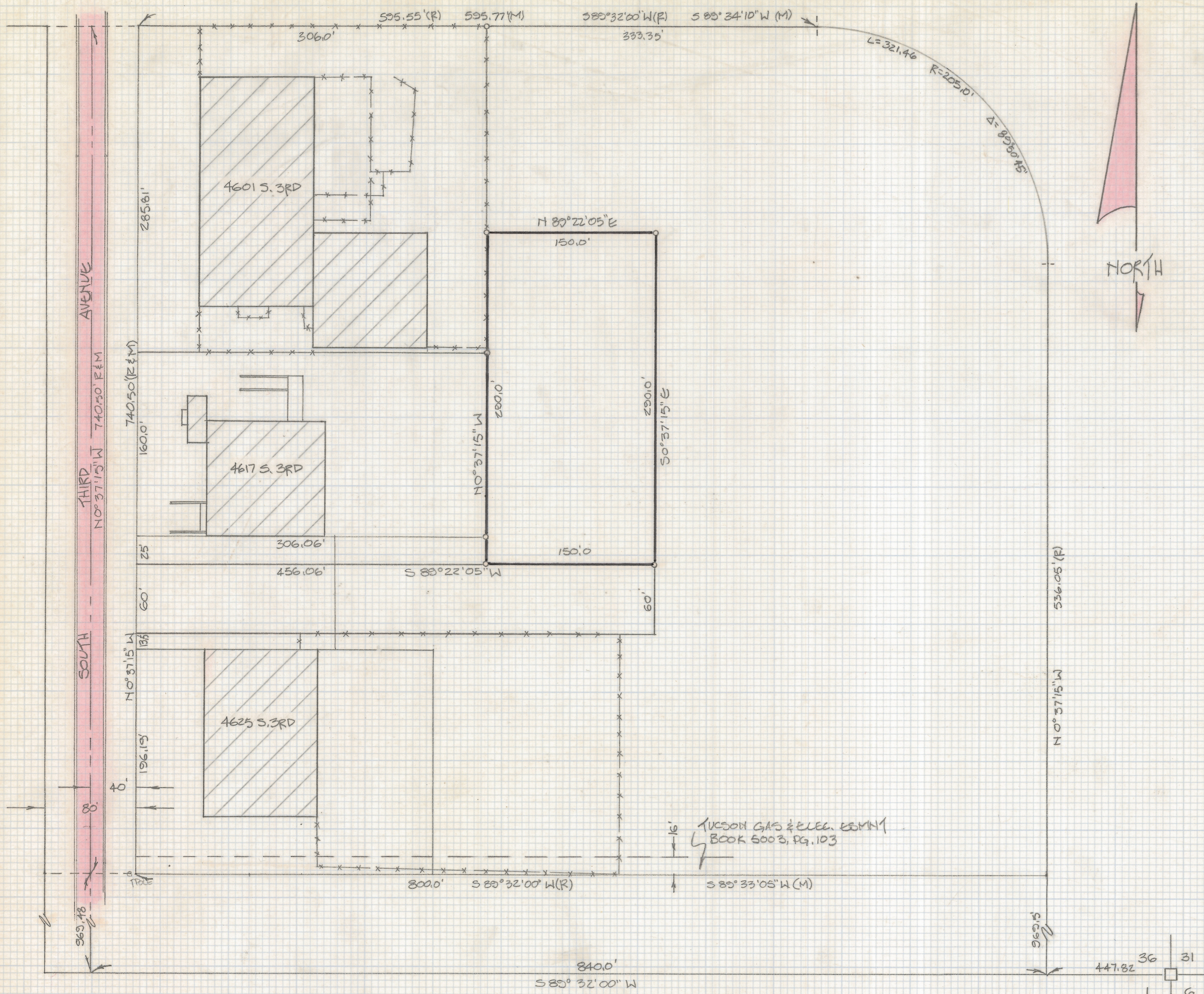
SKETCH

OF EXISTING SEWER MANHOLES
 LOCATED IN A PORTION OF THE
 SOUTHEAST 1/4 OF SECTION 36
 TOWNSHIP 14 SOUTH, RANGE 13 EAST,
 GILA & SALT RIVER BASE AND MERIDIAN,
 PIMA COUNTY, ARIZONA.



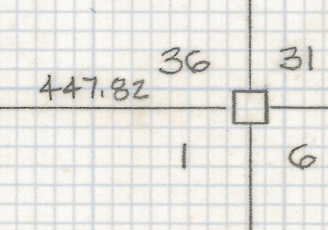
Z-2018-195 1/2
 ROBERT F. MELLEN
 REGISTERED LAND SURVEYOR
 TUCSON, ARIZONA
 JOB # 86-44

REVISED GRADES 6-11-86
 REVISED FIELD 6-10-86



LOCATION MAP
 SECTION 36, TOWNSHIP 14
 SOUTH, RANGE 13 EAST, GILA
 AND SALI RIVER BASE AND MERIDIAN
 PIMA COUNTY, ARIZONA.
 NOT TO SCALE

SCALE: 1" = 60'



Z-2018-195 2/2

JOB 20-44