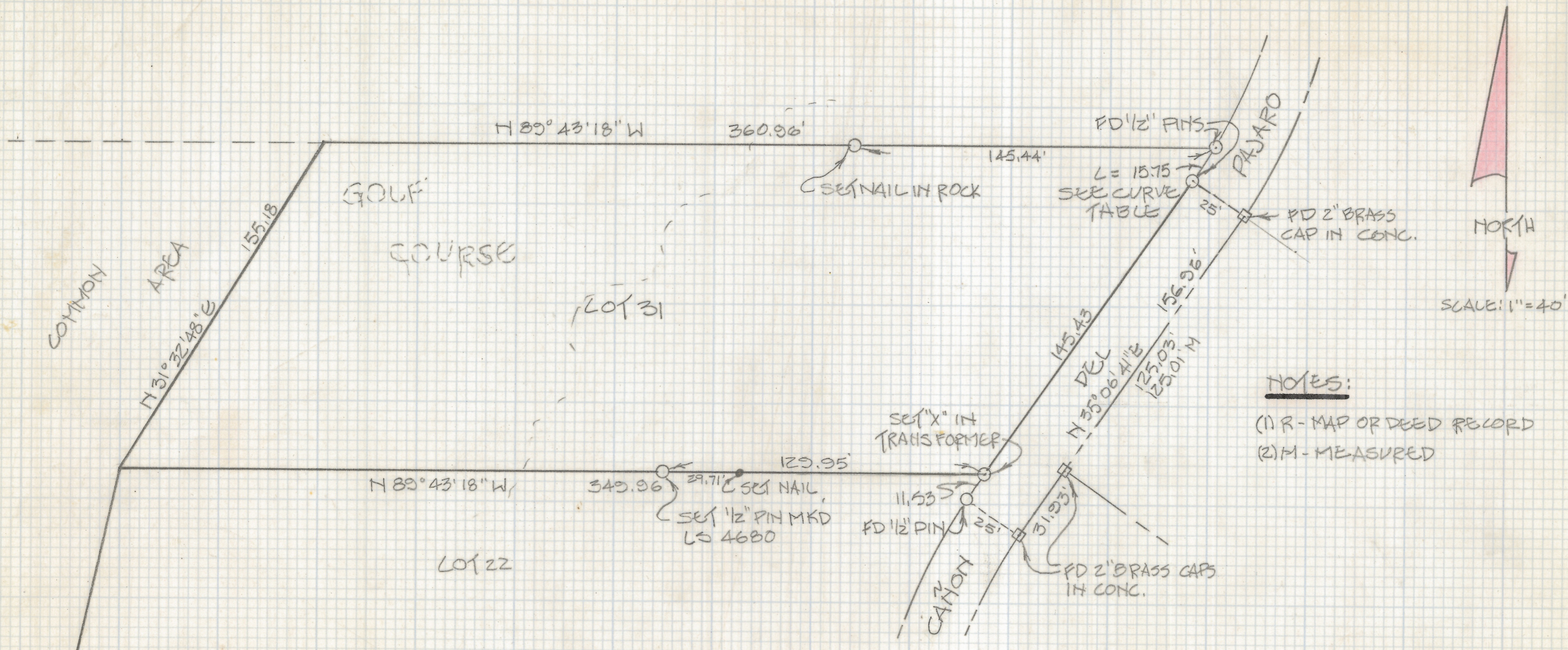


DISCLAIMER:

This unrecorded Record of Survey was donated to the City of Tucson. The City of Tucson provides this data for your personal use "as is." Additionally, the City of Tucson provides this information with the understanding that it is not guaranteed to be accurate, correct or complete and conclusions drawn from such information are the responsibility of the user.



NOTES:
 (1) R - MAP OR DEED RECORD
 (2) M - MEASURED

CURVE TABLE

DELTA	RADIUS	LENGTH	TANGENT	CHORD
4°30'35"	200'	15.75	7.88	15.75

RESULTS OF SURVEY

OF LOT 31 OF CANYON VIEW ESTATES SUBDIVISION AS RECORDED IN BOOK 37 OF MAPS AND PLATS AT PAGE 65 IN THE OFFICE OF THE PIMA COUNTY RECORDER, PIMA COUNTY, ARIZONA.



Z-2018-196
 ROBERT F. MELLEN
 REGISTERED LAND SURVEYOR
 TUCSON, ARIZONA
 JOB 86-45