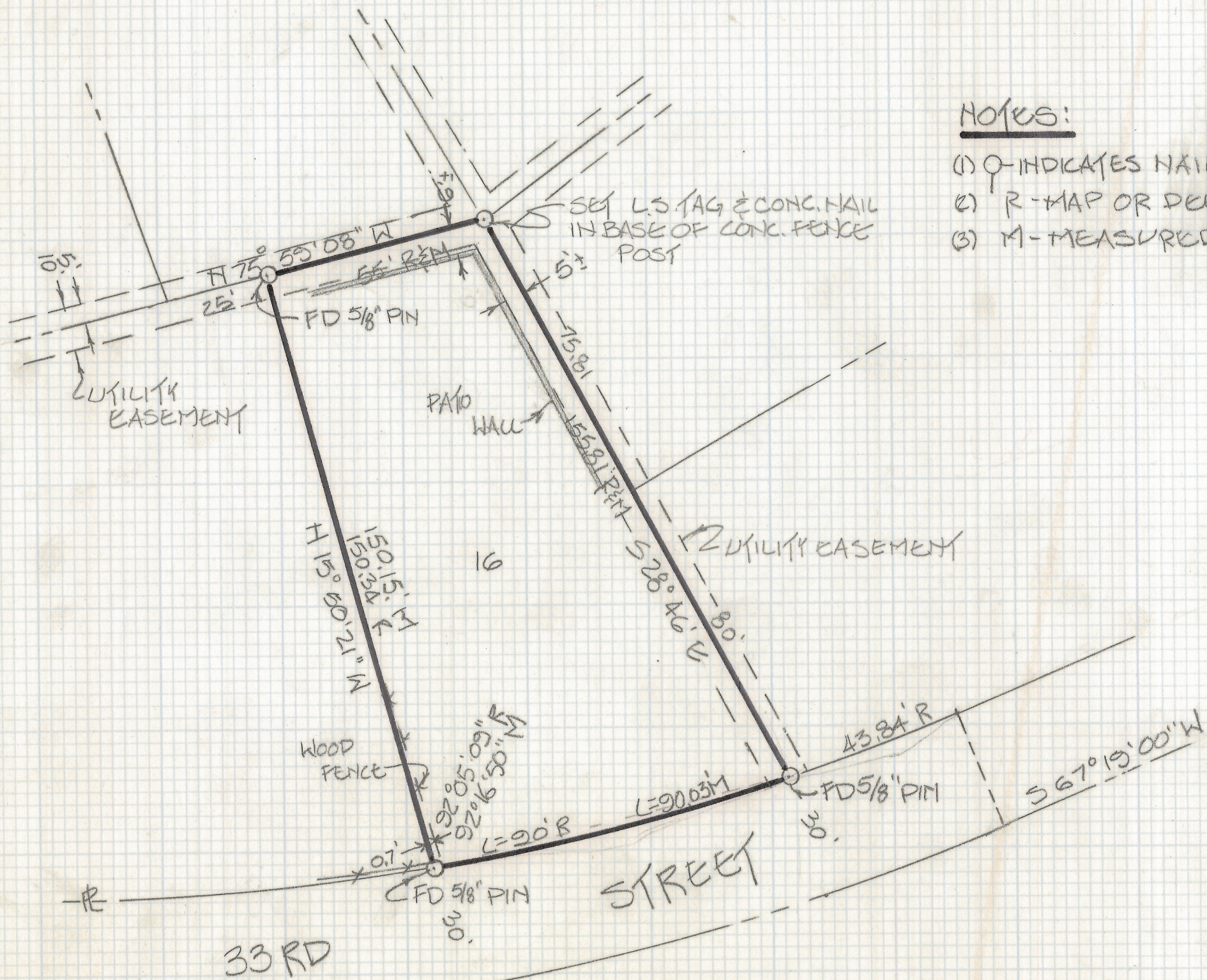


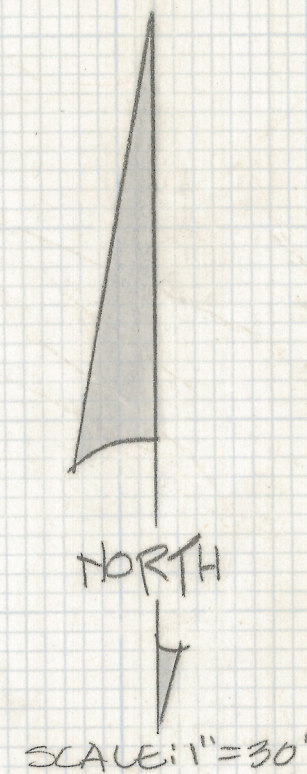
DISCLAIMER:

This unrecorded Record of Survey was donated to the City of Tucson. The City of Tucson provides this data for your personal use "as is." Additionally, the City of Tucson provides this information with the understanding that it is not guaranteed to be accurate, correct or complete and conclusions drawn from such information are the responsibility of the user.



NOTES:

- (1) O INDICATES NAIL MKD LS4680 SET UNLESS NOTED
- (2) R - MAP OR DEED RECORD
- (3) M - MEASURED



RESULTS OF SURVEY

OF LOT 16 OF BLOCK 10 OF PUEBLO GARDENS AS RECORDED IN BOOK 8 OF MAPS AND PLATS AT PAGE 84 IN THE OFFICE OF THE PIMA COUNTY RECORDER, PIMA COUNTY, ARIZONA.

CURVE DATA

DELTA	RADIUS	LENGTH	TANGENT	CHORD
9°02'48"	570'	90'	45.09'	89.91'



ROBERT P. MELLEN
 REGISTERED LAND SURVEYOR
 TUCSON, ARIZONA
 JOB 86-50

Z-2018-200