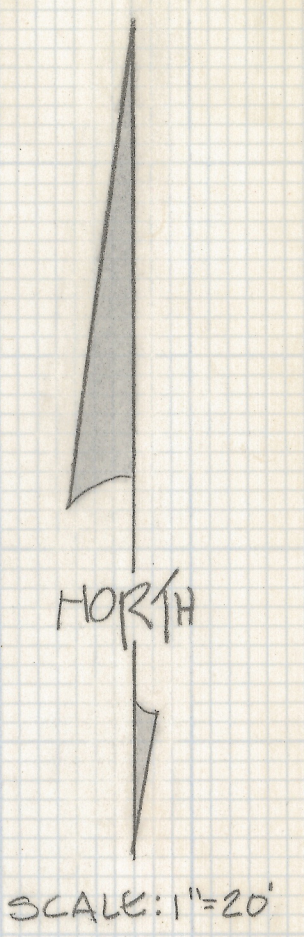
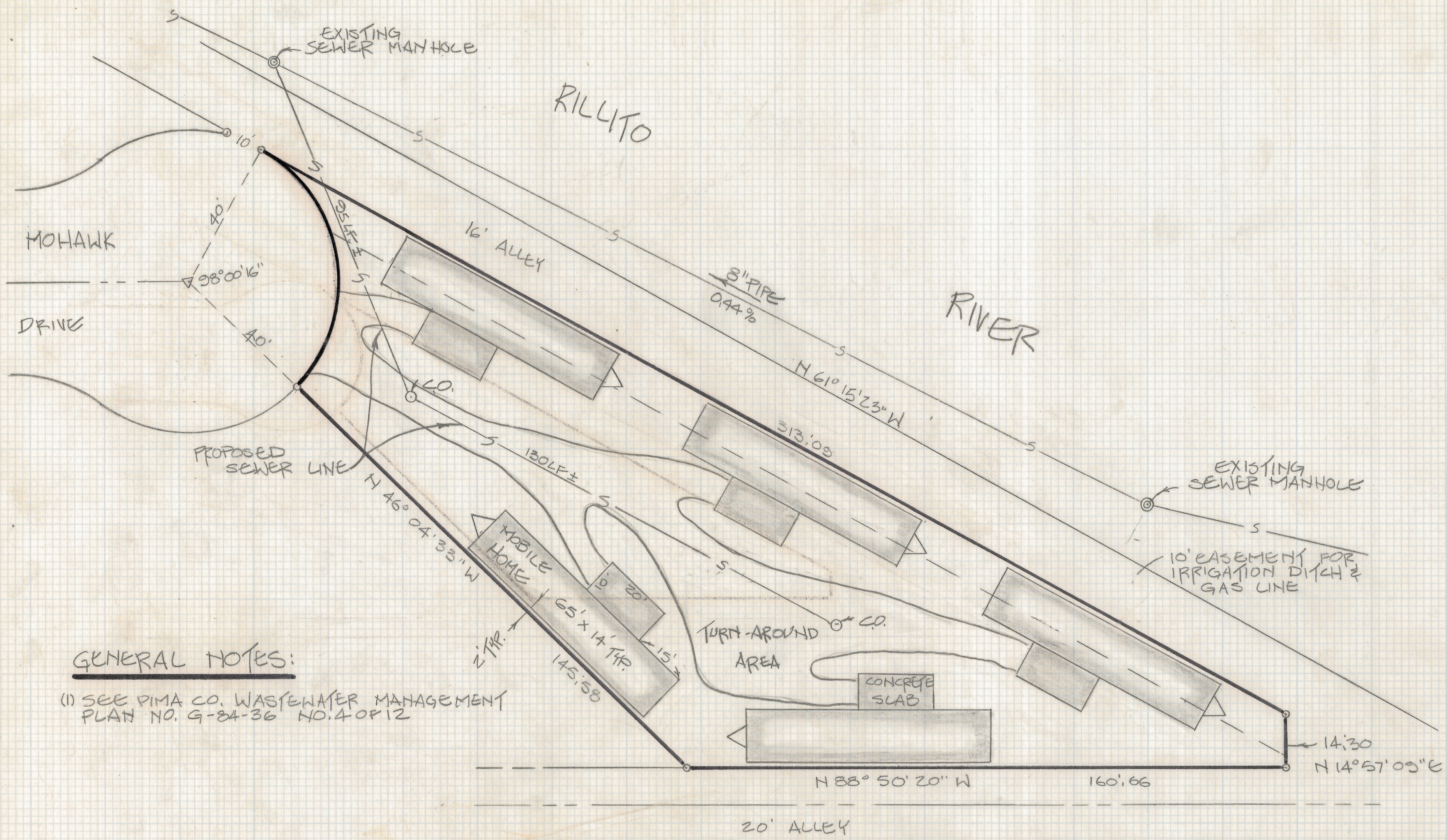


# **DISCLAIMER:**

**This unrecorded Record of Survey was donated to the City of Tucson. The City of Tucson provides this data for your personal use "as is." Additionally, the City of Tucson provides this information with the understanding that it is not guaranteed to be accurate, correct or complete and conclusions drawn from such information are the responsibility of the user.**



GENERAL NOTES:

(1) SEE PIMA CO. WASTEWATER MANAGEMENT PLAN NO. G-84-36 NO. 4 OF 12

SKETCH OF PROPOSED DEVELOPMENT

OF LOT 64 OF RIVERSIDE GARDENS AS RECORDED IN BOOK 12 OF MAPS AND PLATS AT PAGE 61 IN THE OFFICE OF THE PIMA COUNTY RECORDER, PIMA COUNTY, ARIZONA.

Z-2018-204

ROBERT F. MELLEH  
REGISTERED LAND SURVEYOR  
TUCSON, ARIZONA  
JOB 86-57