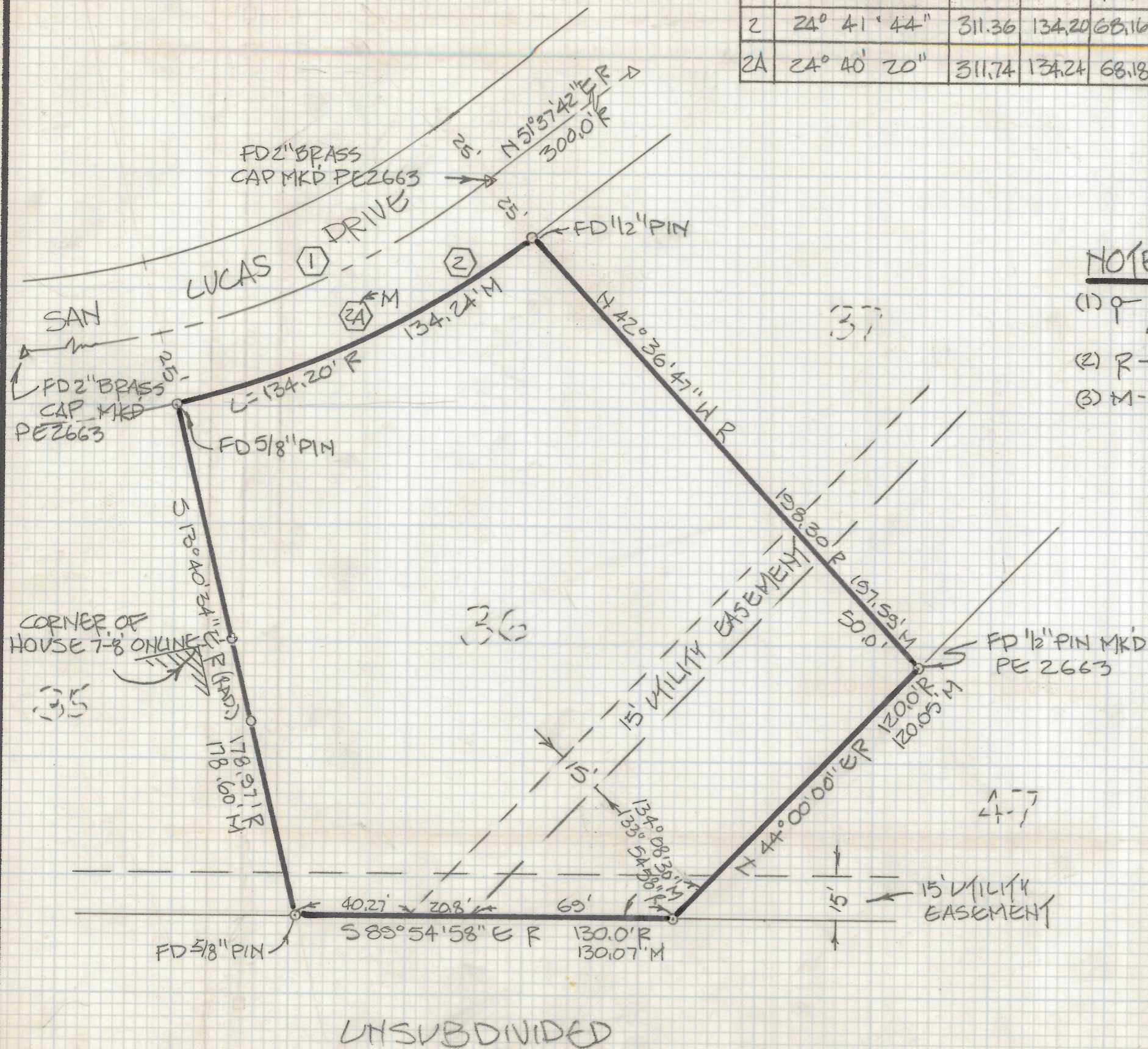


DISCLAIMER:

This unrecorded Record of Survey was donated to the City of Tucson. The City of Tucson provides this data for your personal use "as is." Additionally, the City of Tucson provides this information with the understanding that it is not guaranteed to be accurate, correct or complete and conclusions drawn from such information are the responsibility of the user.

CURVE DATA

NO.	DELTA	R	L	T	C
1	38° 30' 00"	286.36	192.42	100.00	186.82
2	24° 41' 44"	311.36	134.20	68.16	133.17
2A	24° 40' 20"	311.74	134.24	68.18	133.20



NOTES:

- (1) P INDICATES 1/2" PIN MKD LS 4680 SET UNLESS NOTED
- (2) R - MAP OR DEED RECORD
- (3) M - MEASURED



RESULTS OF SURVEY

OF LOT 36 OF LEONARDO ESTATES AS RECORDED IN BOOK 18 OF MAPS AND PLATS AT PAGE 5 IN THE OFFICE OF THE PIMA COUNTY RECORDER, PIMA COUNTY, ARIZONA.



ROBERT F. MELLEN
REGISTERED LAND SURVEYOR
TUCSON, ARIZONA
JOB 86-74

Z-2018-212