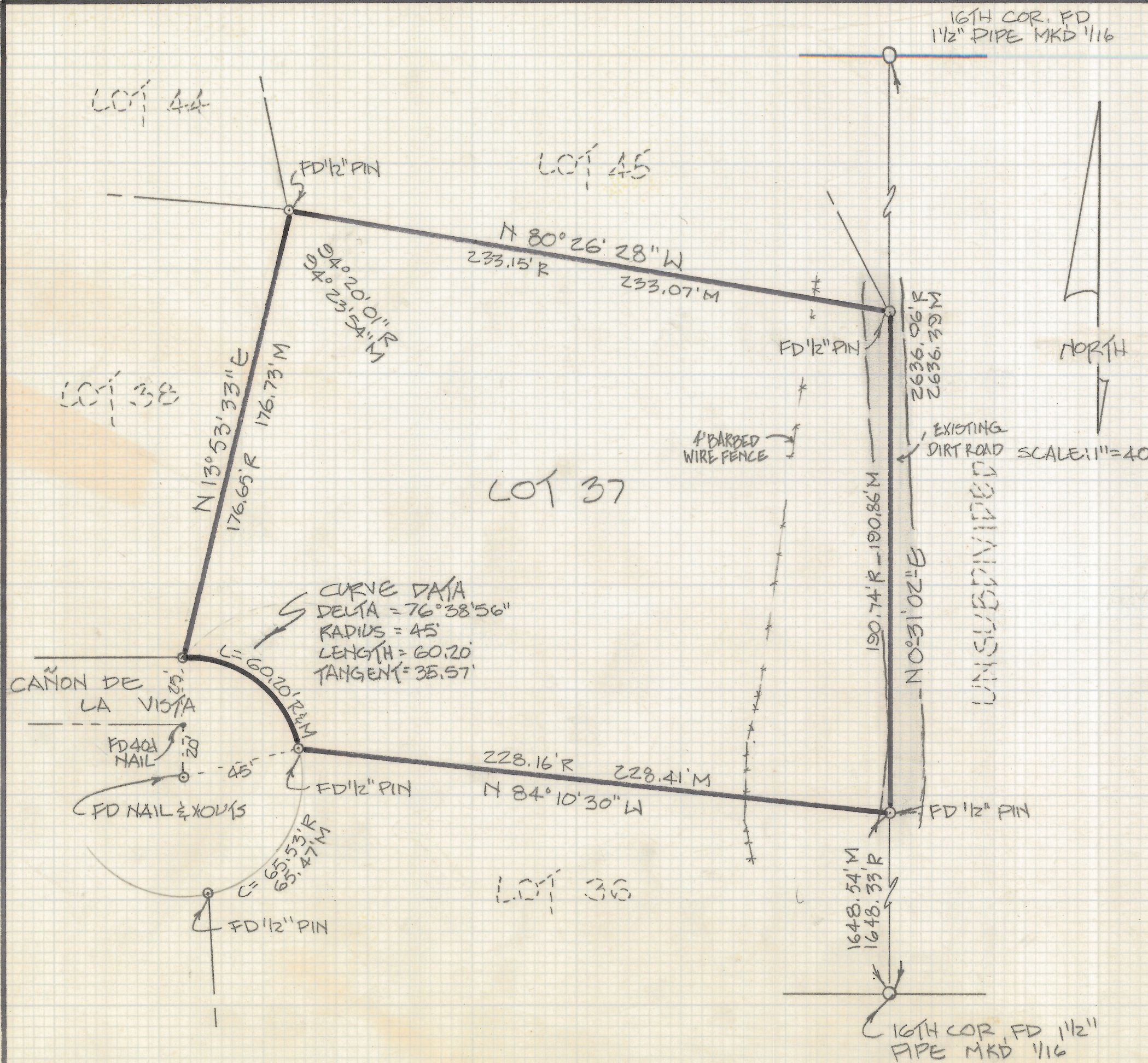


DISCLAIMER:

This unrecorded Record of Survey was donated to the City of Tucson. The City of Tucson provides this data for your personal use "as is." Additionally, the City of Tucson provides this information with the understanding that it is not guaranteed to be accurate, correct or complete and conclusions drawn from such information are the responsibility of the user.



NOTES:

- (1) \circ INDICATES 1/2" PIN MKD LS 4680 SET UNLESS NOTED
- (2) R- MAP OR DEED RECORD
- (3) M- MEASURED

NORTH

RESULTS OF SURVEY

OF LOT 37 CANYON VIEW ESTATES AS RECORDED IN BOOK 36 OF MAPS AND PLATS AT PAGE 68 IN THE OFFICE OF THE PIMA COUNTY RECORDER, PIMA COUNTY, ARIZONA.



Z-2018-215

ROBERT F. MELLEN
 REGISTERED LAND SURVEYOR
 TULSON, ARIZONA
 JOB 86-79

REVISED 12/19/86 (ROAD)