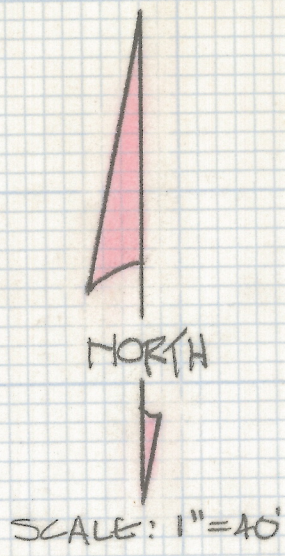
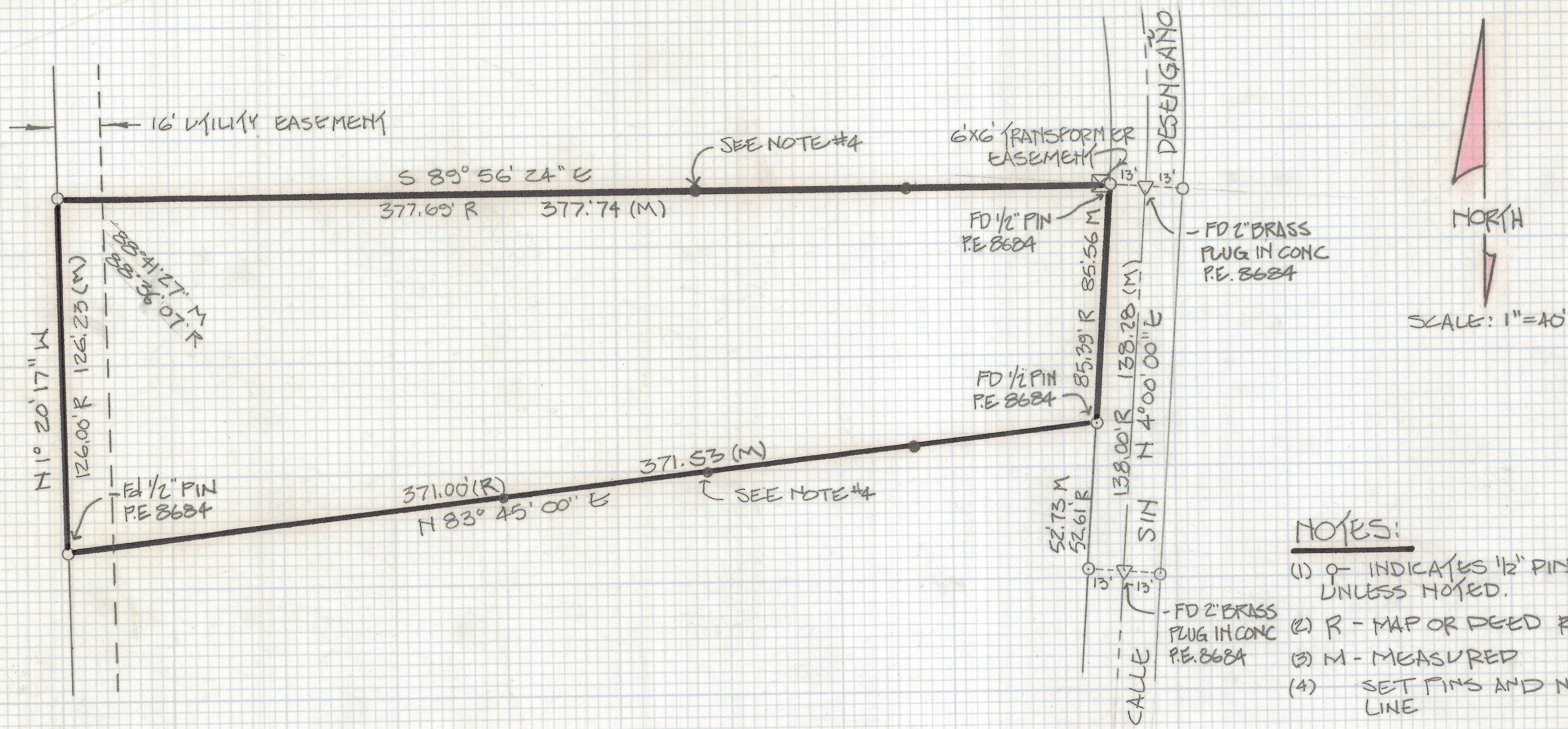


# **DISCLAIMER:**

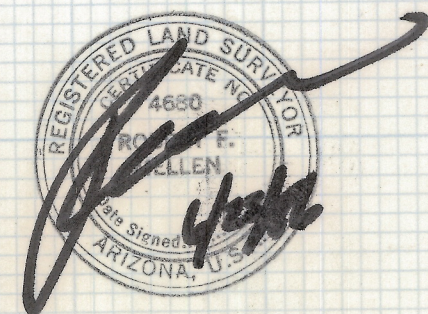
**This unrecorded Record of Survey was donated to the City of Tucson. The City of Tucson provides this data for your personal use "as is." Additionally, the City of Tucson provides this information with the understanding that it is not guaranteed to be accurate, correct or complete and conclusions drawn from such information are the responsibility of the user.**



- NOTES:**
- (1)  $\circ$  INDICATES 1/2" PIN MK'D LS 4680 SET UNLESS NOTED.
  - (2) R - MAP OR DEED RECORD
  - (3) M - MEASURED
  - (4) SET PINS AND NAILS ON PROPERTY LINE

RESULTS OF SURVEY

OF LOT 138 OF SIN VACAS SUBDIVISION AS RECORDED IN BOOK 28 OF MAPS AND PLATS AT PAGE 54 IN THE OFFICE OF THE PIMA COUNTY RECORDER, PIMA COUNTY, ARIZONA.



Z-2618-217  
 ROBERT F. MELLEN  
 REGISTERED LAND SURVEYOR  
 TUCSON, ARIZONA  
 JOB 86-81