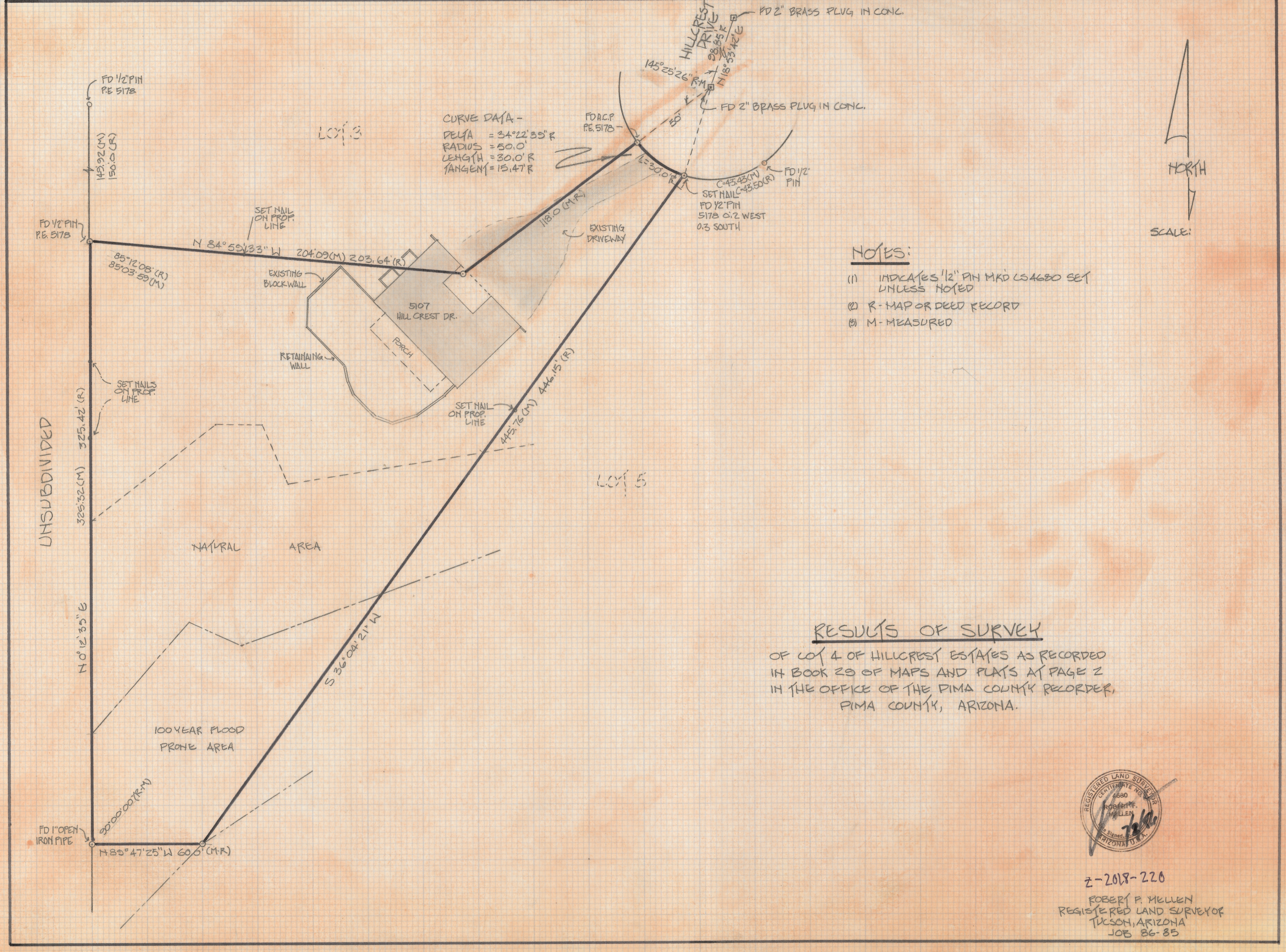


DISCLAIMER:

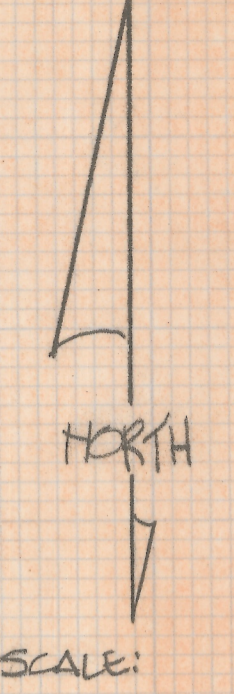
This unrecorded Record of Survey was donated to the City of Tucson. The City of Tucson provides this data for your personal use "as is." Additionally, the City of Tucson provides this information with the understanding that it is not guaranteed to be accurate, correct or complete and conclusions drawn from such information are the responsibility of the user.



CURVE DATA -
 DELTA = 34°22'35" R
 RADIUS = 50.0'
 LENGTH = 30.0' R
 TANGENT = 15.47' R

- NOTES:
- (1) INDICATES 1/2" PIN MKD CS4680 SET UNLESS NOTED
 - (2) R - MAP OR DEED RECORD
 - (3) M - MEASURED

RESULTS OF SURVEY
 OF LOT 4 OF HILLCREST ESTATES AS RECORDED
 IN BOOK 29 OF MAPS AND PLATS AT PAGE 2
 IN THE OFFICE OF THE PIMA COUNTY RECORDER,
 PIMA COUNTY, ARIZONA.



Z-2018-220
 ROBERT F. MULLEN
 REGISTERED LAND SURVEYOR
 TUCSON, ARIZONA
 JOB 86-85