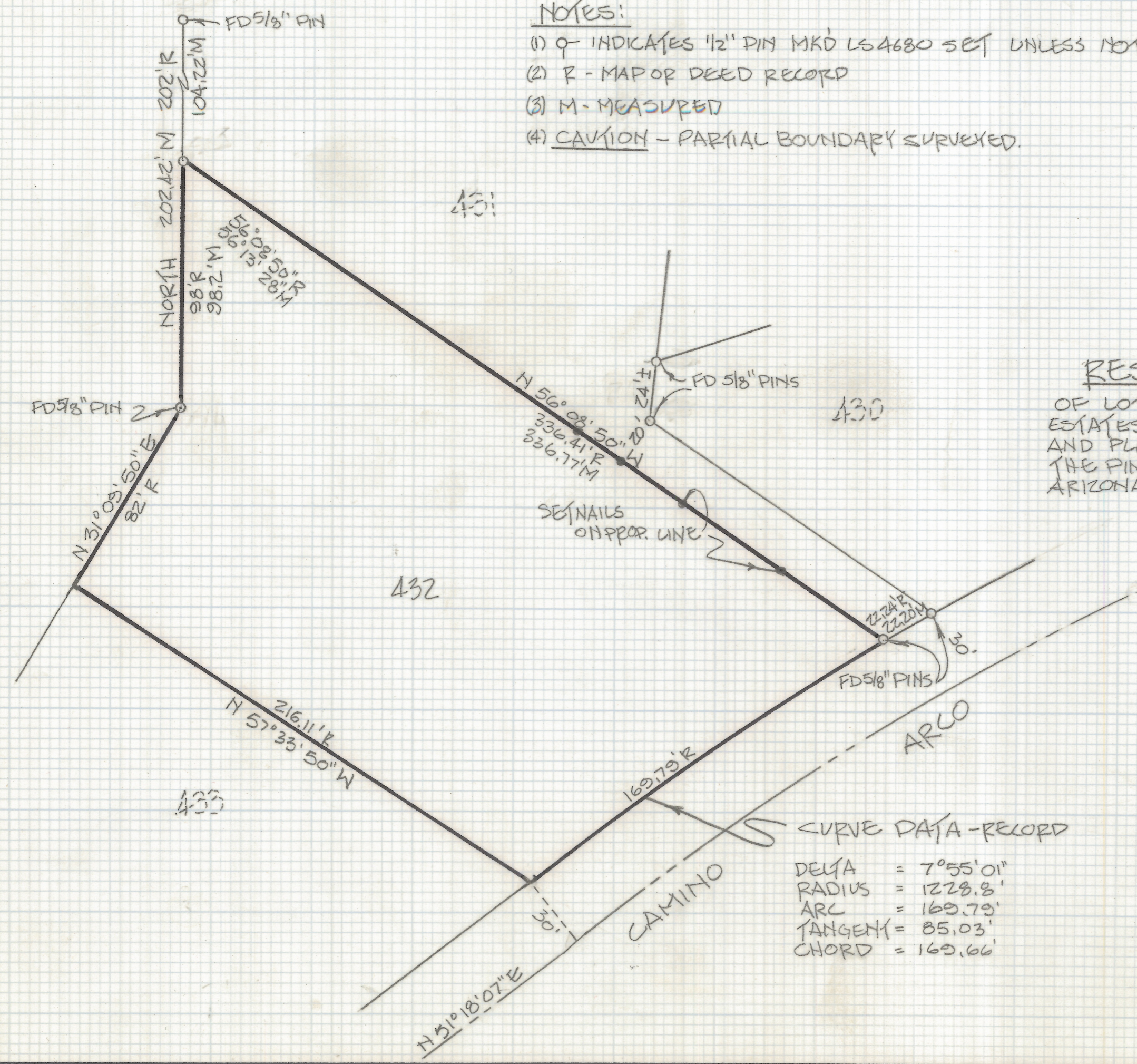
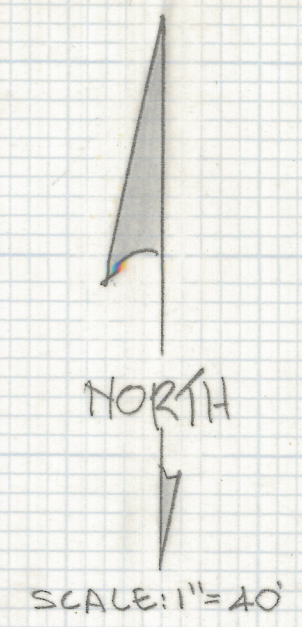


DISCLAIMER:

This unrecorded Record of Survey was donated to the City of Tucson. The City of Tucson provides this data for your personal use "as is." Additionally, the City of Tucson provides this information with the understanding that it is not guaranteed to be accurate, correct or complete and conclusions drawn from such information are the responsibility of the user.

- NOTES:**
- (1) \circ INDICATES 1/2" PIN MKD LS 4680 SET UNLESS NOTED
 - (2) R - MAP OR DEED RECORD
 - (3) M - MEASURED
 - (4) CAUTION - PARTIAL BOUNDARY SURVEYED.



RESULTS OF SURVEY

OF LOT 432 OF FLECHA CAIDA RANCH ESTATES AS SHOWN IN BOOK 14 OF MAPS AND PLATS AT PAGE 43 IN THE OFFICE OF THE PIMA COUNTY RECORDER, PIMA COUNTY, ARIZONA.

CURVE DATA - RECORD

DELTA	=	7°55'01"
RADIUS	=	1228.8'
ARC	=	169.79'
TANGENT	=	85.03'
CHORD	=	169.66'



Z-2018-230
 ROBERT F. MELLEN
 REGISTERED LAND SURVEYOR
 TUCSON ARIZONA
 JOB 86-96