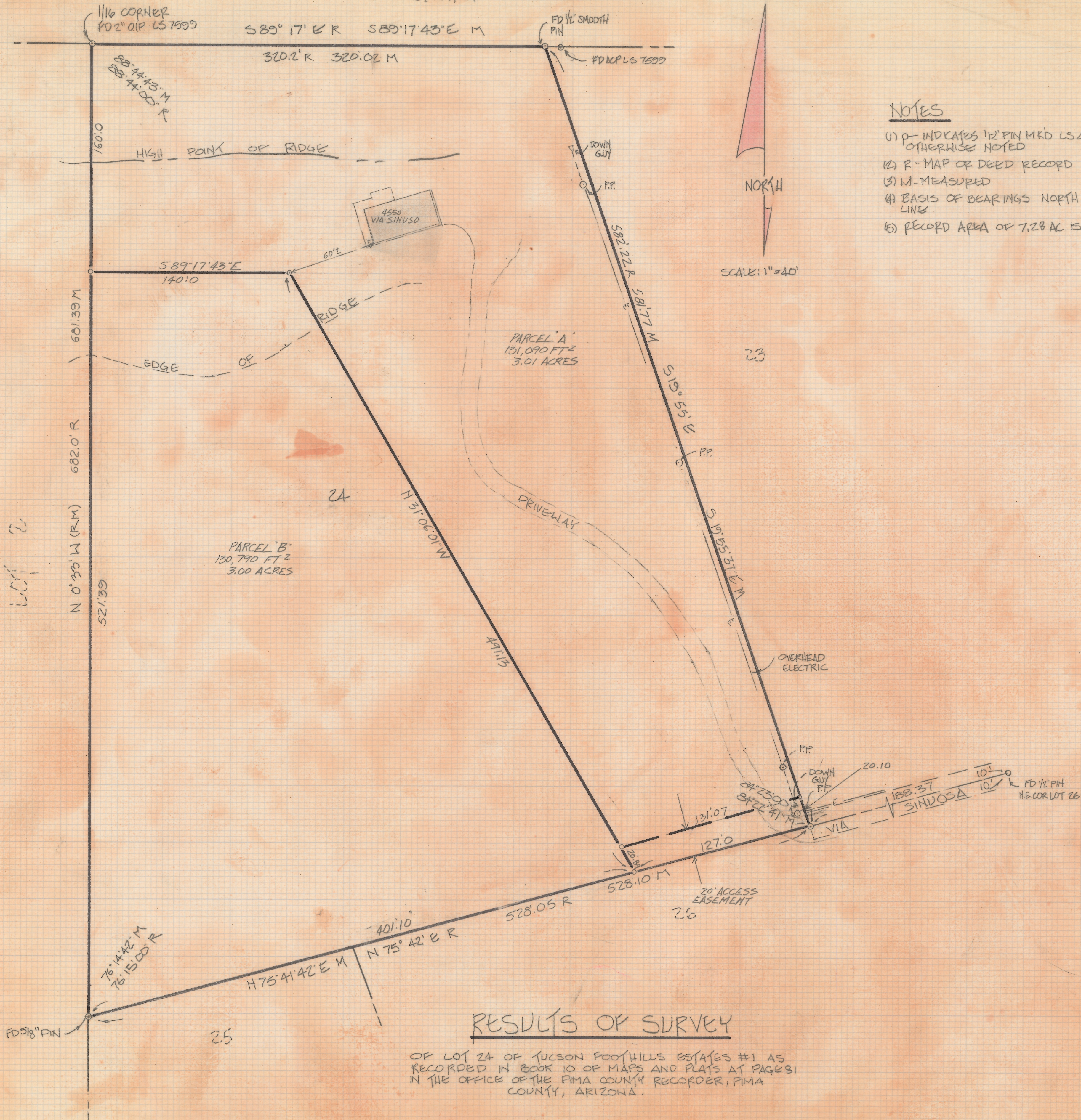


DISCLAIMER:

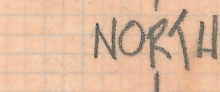
This unrecorded Record of Survey was donated to the City of Tucson. The City of Tucson provides this data for your personal use "as is." Additionally, the City of Tucson provides this information with the understanding that it is not guaranteed to be accurate, correct or complete and conclusions drawn from such information are the responsibility of the user.

UNSUBDIVIDED



NOTES

- (1) P - INDICATES 1/2" PIN MKD LS 4680 SET UNLESS OTHERWISE NOTED
- (2) R - MAP OF DEED RECORD
- (3) M - MEASURED
- (4) BASIS OF BEARINGS NORTH OF 33' W FOR WEST LINE
- (5) RECORD AREA OF 7.28 AC IS IN COMMERCIAL ACRES



SCALE: 1"=40'

RESULTS OF SURVEY

OF LOT 24 OF TUCSON FOOTHILLS ESTATES #1 AS RECORDED IN BOOK 10 OF MAPS AND PLATS AT PAGE 81 IN THE OFFICE OF THE PIMA COUNTY RECORDER, PIMA COUNTY, ARIZONA.



Z-2018-233
 ROBERT F. MELLEN
 REGISTERED LAND SURVEYOR
 TUCSON, ARIZONA
 JOB 86-104

REVISED PARCELS 'A' AND 'B' 3/3/87