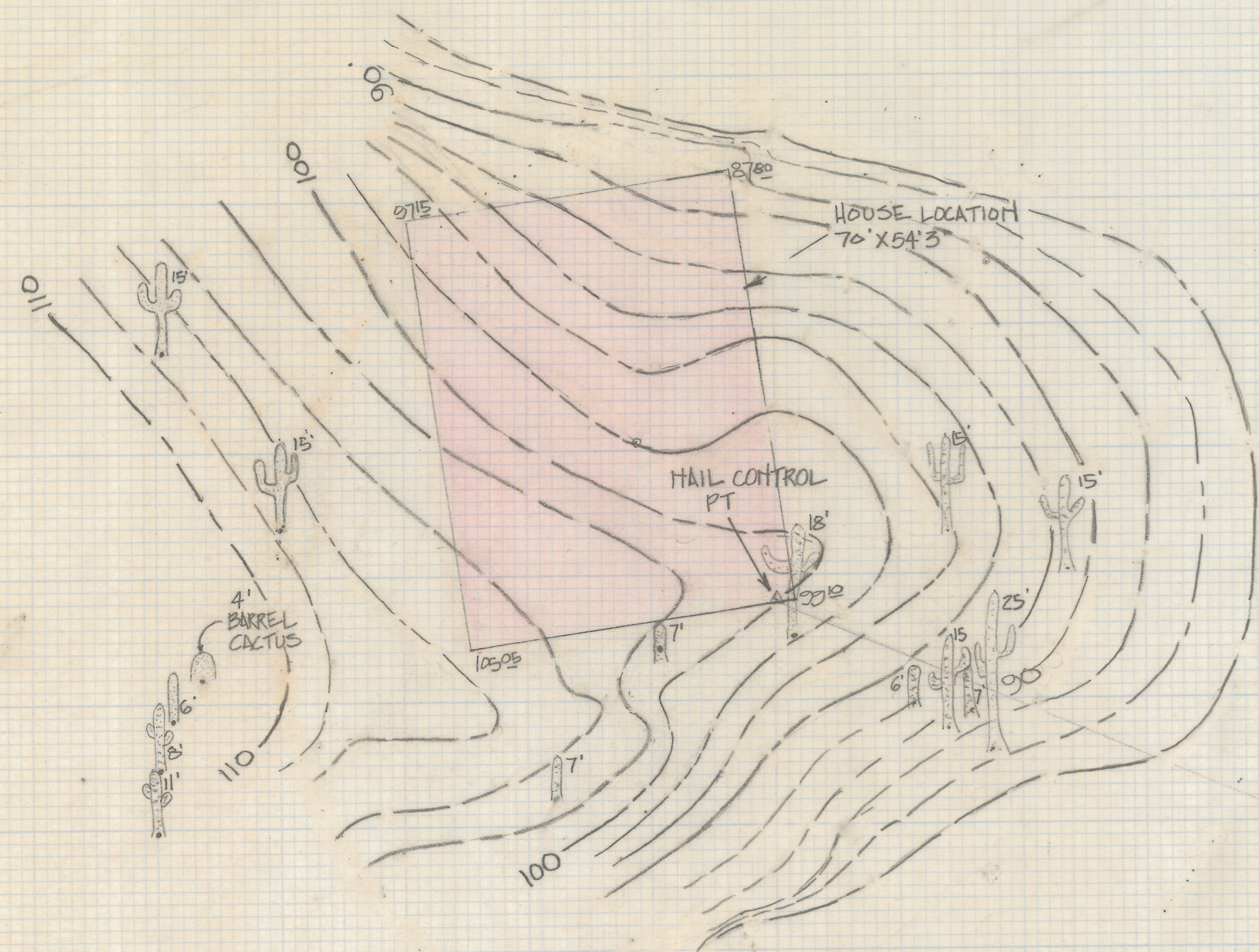


DISCLAIMER:

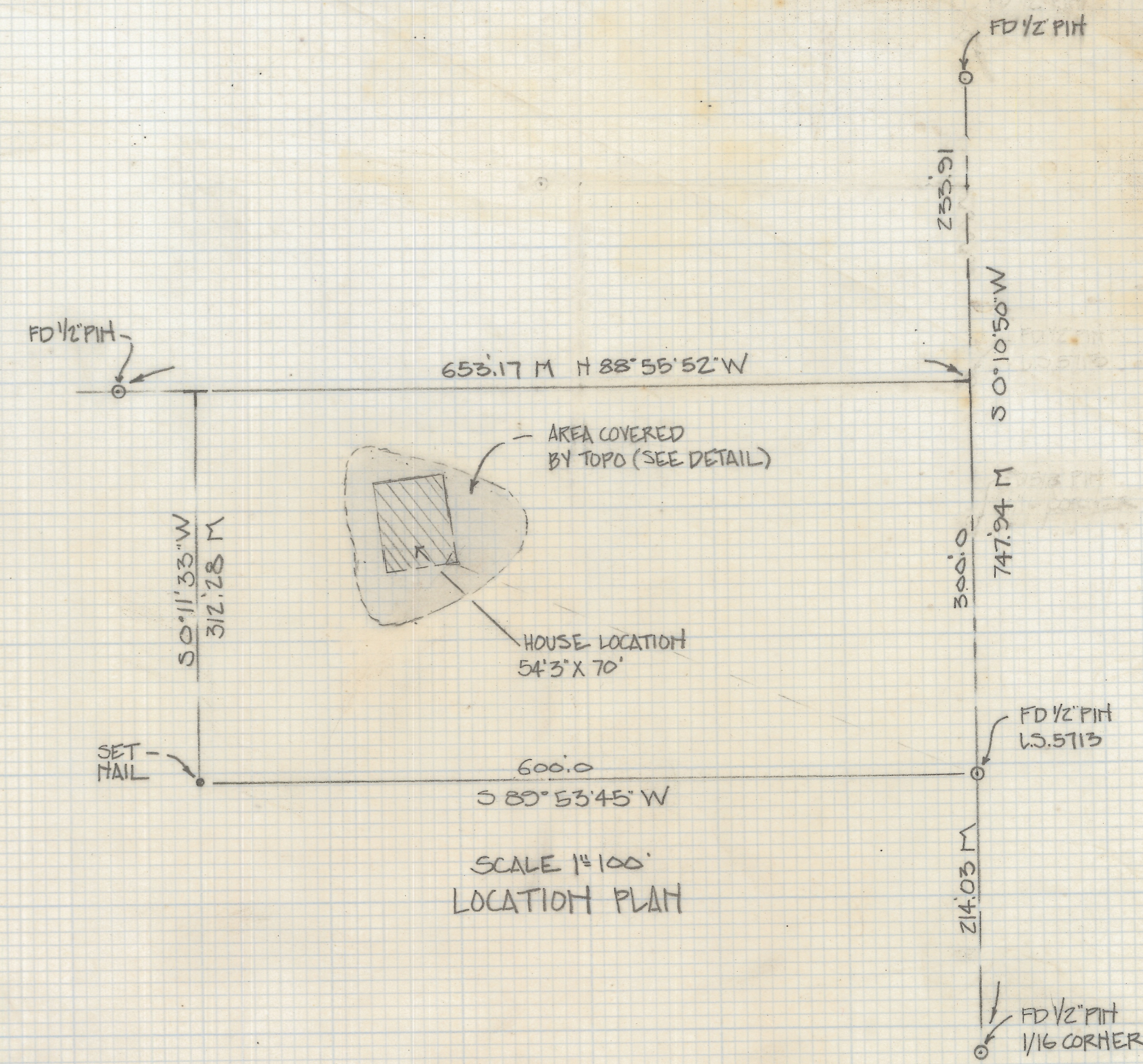
This unrecorded Record of Survey was donated to the City of Tucson. The City of Tucson provides this data for your personal use "as is." Additionally, the City of Tucson provides this information with the understanding that it is not guaranteed to be accurate, correct or complete and conclusions drawn from such information are the responsibility of the user.



DETAIL
SCALE 1" = 20' 0"
CONTOUR INTERVAL
2' FEET

TOPOGRAPHICAL SURVEY OF

A PORTION OF THE SOUTHWEST QUARTER OF SECTION THREE, TOWNSHIP
FOURTEEN SOUTH RANGE TWELVE EAST, GILA AND SALT RIVER BASE AND
MERIDIAN PIMA COUNTY ARIZONA



NOTES

- (1) THIS IS NOT A BOUNDARY SURVEY
- (2) ASSUMED ELEVATION 100' TOP OF HAIL CONTROL PT
- (3) INDICATES SAGUARO CACTUS AND HEIGHT UNLESS NOTED
- (4) CONTOUR INTERVAL 2' FEET



Z-2018-243
ROBERT F. MELLETT
REGISTERED LAND SURVEYOR
TUCSON, ARIZONA
JOB # 86-116