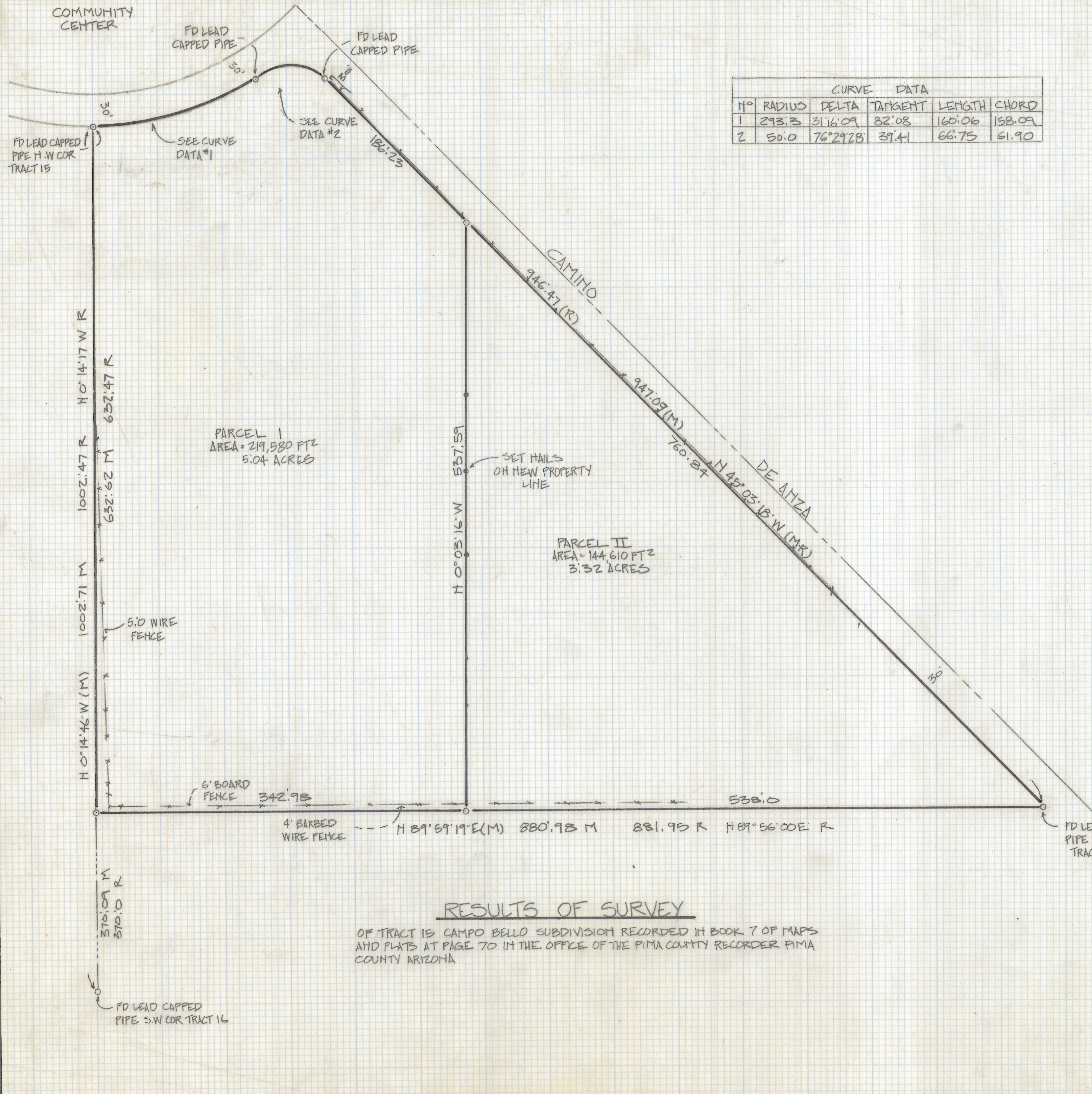
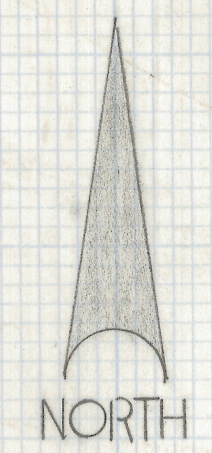


DISCLAIMER:

This unrecorded Record of Survey was donated to the City of Tucson. The City of Tucson provides this data for your personal use "as is." Additionally, the City of Tucson provides this information with the understanding that it is not guaranteed to be accurate, correct or complete and conclusions drawn from such information are the responsibility of the user.



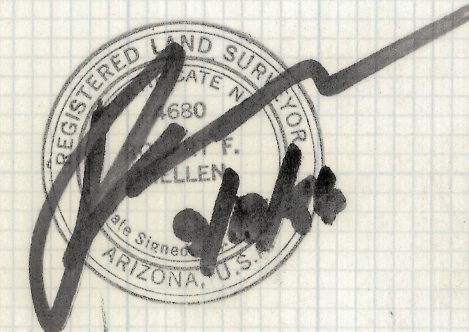
CURVE DATA					
N ^o	RADIUS	DELTA	TANGENT	LENGTH	CHORD
1	293.3	31° 16' 09"	82.08	160.06	158.09
2	50.0	76° 29' 28"	39.41	66.73	61.90



- NOTES**
- (1) ∅ INDICATES SET 1/2" PITH MKD L= 4680 UNLESS NOTED
 - (2) M- MEASURED
 - (3) R- MAP OR DEED RECORD

RESULTS OF SURVEY

OF TRACT 15 CAMPO BELLO SUBDIVISION RECORDED IN BOOK 7 OF MAPS AND PLATS AT PAGE 70 IN THE OFFICE OF THE PIMA COUNTY RECORDER PIMA COUNTY ARIZONA



Z-2018-244
 ROBERT F. MELIEN
 REGISTERED LAND SURVEYOR
 TUCSON, ARIZONA
 JOB # 86-117