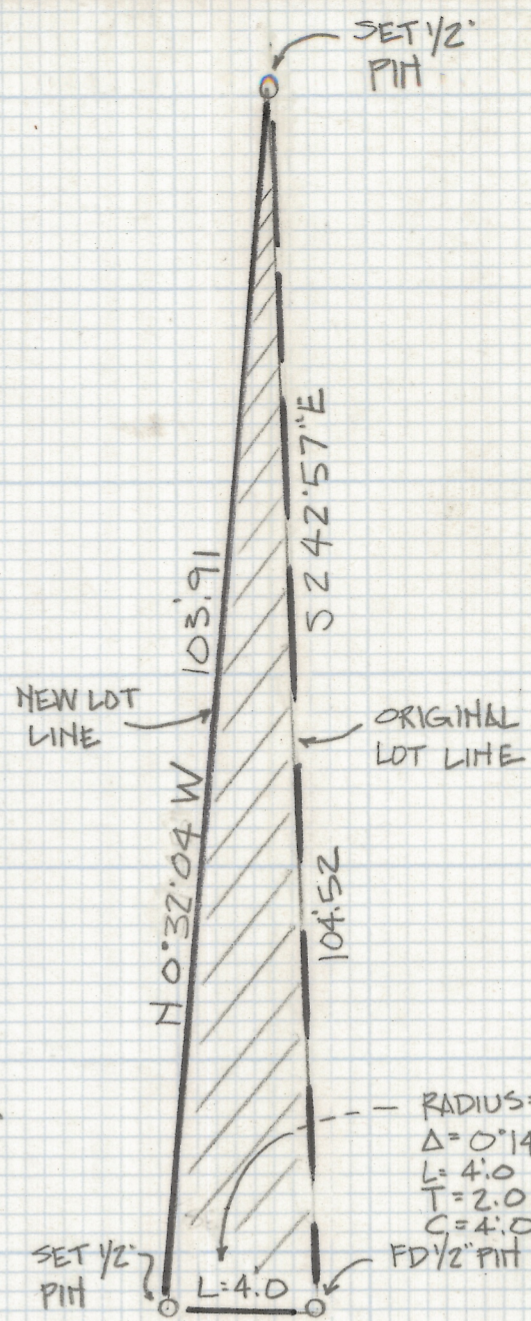
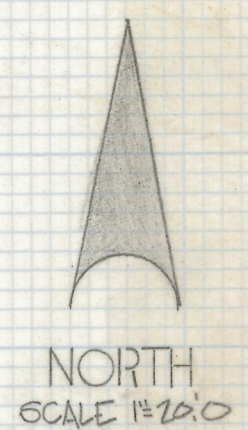


DISCLAIMER:

This unrecorded Record of Survey was donated to the City of Tucson. The City of Tucson provides this data for your personal use "as is." Additionally, the City of Tucson provides this information with the understanding that it is not guaranteed to be accurate, correct or complete and conclusions drawn from such information are the responsibility of the user.

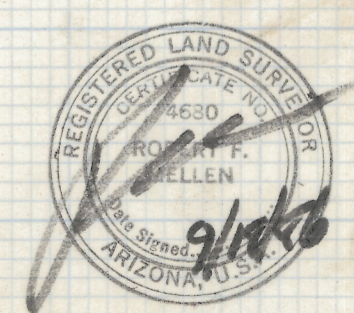
CURVE DATA					
N ^o	RADIUS	DELTA	TANGENT	LENGTH	CHORD
1	950.0	5°06'17"	42.35	84.64	84.61
2	950.0	4°18'27"	35.73	71.42	71.40
3	950.0	0°21'04"	3.05	6.10	6.10
4	985.0	4°45'17"	40.89	81.74	81.72
5	985.0	4°41'24"	40.34	80.63	80.61



- DETAIL
PARCEL 1
N.T.S.
- NOTES
- (1) Q- INDICATES SET 1/2" PIH MKD L.S. 4680 UNLESS NOTED
 - (2) M- MEASURED
 - (3) R- MAP OR DEED RECORD
 - (4) N.T.S. NOT TO SCALE

RESULTS OF SURVEY

OF LOTS 15 AND 16 BLOCK 8 HIGHLAND VISTA SUBDIVISION RECORDED
IN BOOK 9 OF MAPS AND PLATS AT PAGE 87 IN THE OFFICE OF THE PIMA
COUNTY RECORDER PIMA COUNTY ARIZONA



7-2018-248
ROBERT F. MELLEH
REGISTERED LAND SURVEYOR
TUCSON, ARIZONA
JOB # 86-125