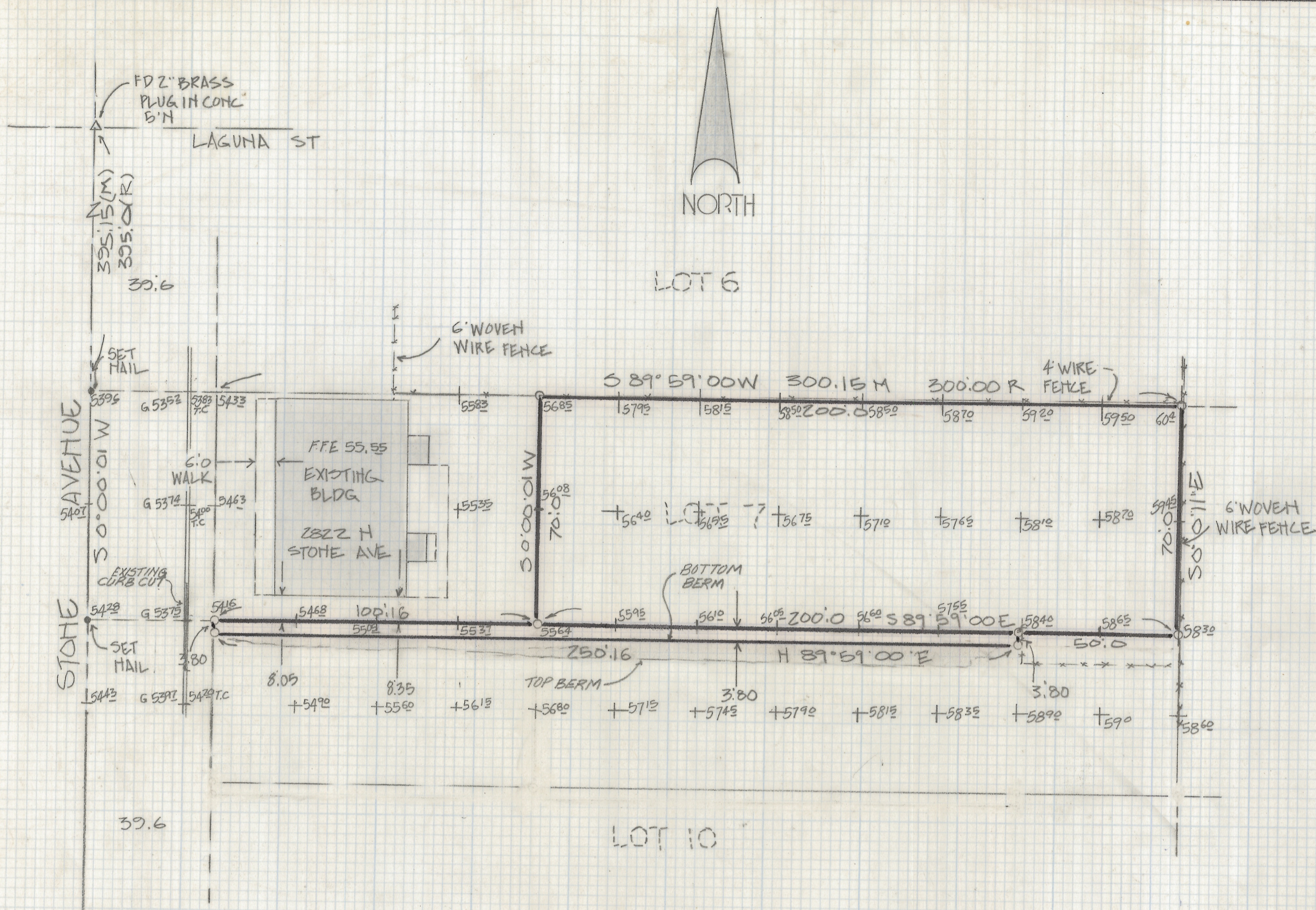


DISCLAIMER:

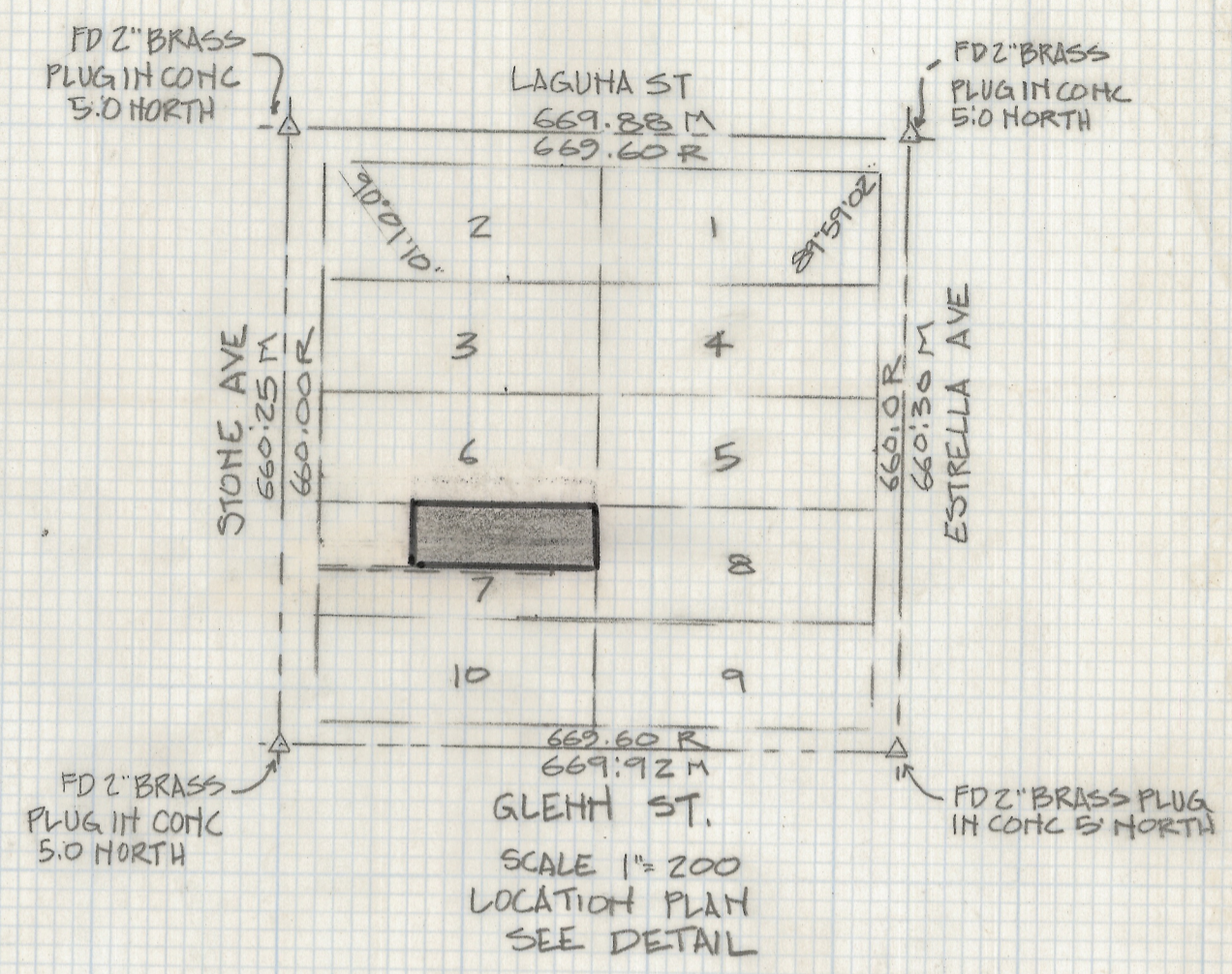
This unrecorded Record of Survey was donated to the City of Tucson. The City of Tucson provides this data for your personal use "as is." Additionally, the City of Tucson provides this information with the understanding that it is not guaranteed to be accurate, correct or complete and conclusions drawn from such information are the responsibility of the user.



DETAIL
SCALE 1"=30.0

RESULTS OF SURVEY

OF A PORTION OF LOT 7 BLOCK 28 CORONADO HEIGHTS RECORDED IN BOOK 3 OF MAPS AND PLATS AT PAGE 115 IN THE OFFICE OF THE PIMA COUNTY RECORDER, PIMA COUNTY, ARIZONA



NOTES

- (1) ♀ INDICATES SET 1/2" P.I.M MKD L.S 4680 UNLESS NOTED
- (2) M-MEASURED
- (3) R-MAP OR DEED RECORD
- (4) BENCH MARK DATUM PER CITY OF TUCSON PLAN NO 1-822A SHEET 35 OF 41 ELEV 55.20 TOP OF CURB RETURN N.W. CORNER STONE AVE. AND GLENN ST.



Z-2018-249
ROBERT F. MELLETT
REGISTERED LAND SURVEYOR
TUCSON, ARIZONA
JOB # 86-126