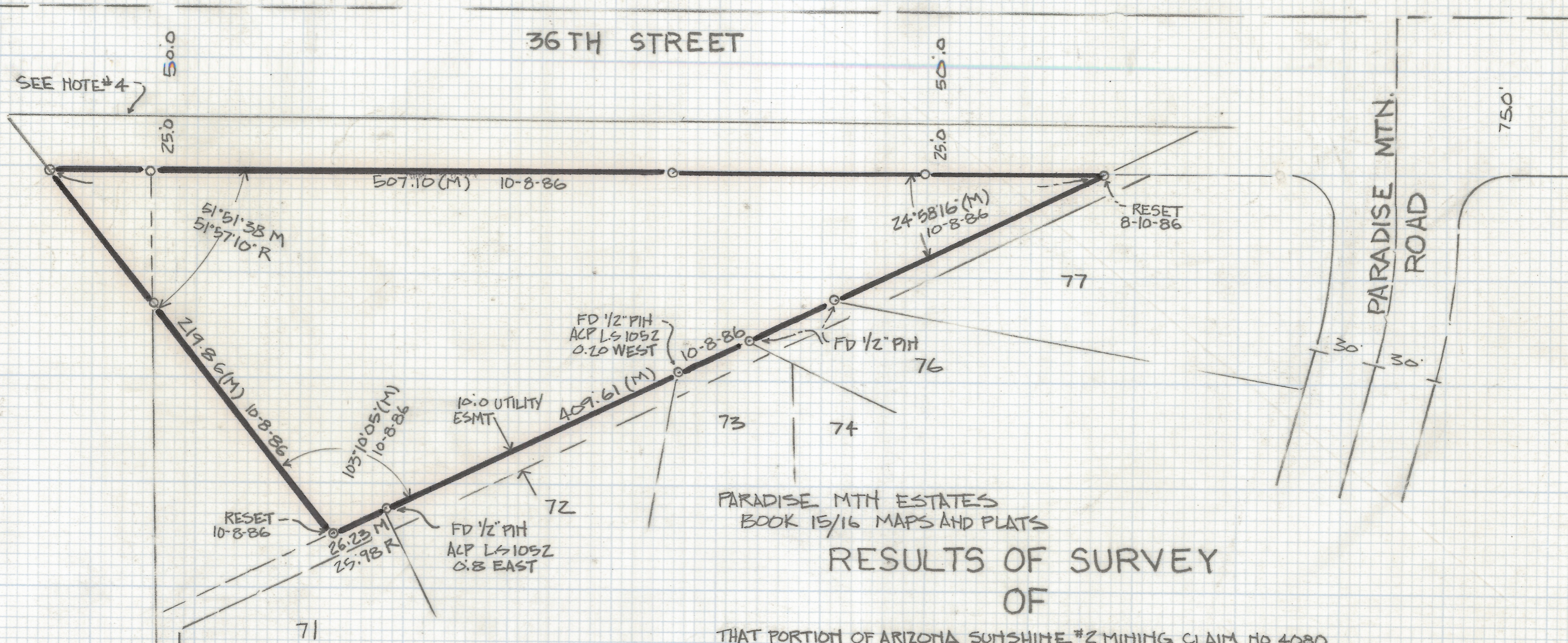
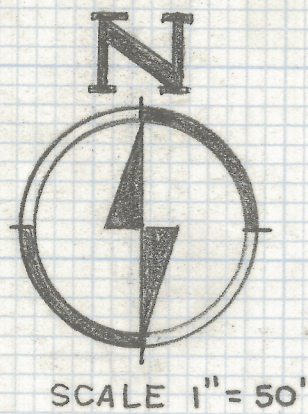


# **DISCLAIMER:**

**This unrecorded Record of Survey was donated to the City of Tucson. The City of Tucson provides this data for your personal use "as is." Additionally, the City of Tucson provides this information with the understanding that it is not guaranteed to be accurate, correct or complete and conclusions drawn from such information are the responsibility of the user.**



PARADISE MTH ESTATES  
BOOK 15/16 MAPS AND PLATS  
**RESULTS OF SURVEY**  
OF

THAT PORTION OF ARIZONA SUNSHINE #2 MINING CLAIM NO 4080 AMOLE DISTRICT LYING SOUTH OF 36TH STREET AS ESTABLISHED BY ROAD MAP RECORDED IN BOOK 2 AT PAGE 100 ALL IN PIMA COUNTY, ARIZONA, PART OF SECTION 28 TOWNSHIP 14 SOUTH RANGE 13 EAST GILA AND SALT RIVER BASE AND MERIDIAN.

**NOTES**

- (1) M - MEASURED DISTANCE
- (2) R - MAP RECORD - PARADISE MTN. ESTATES
- (3) ○ - INDICATES 1/2" STEEL PIN FOUND
- (4) ROAD MAPS BOOK 8 PAGE 100 INDICATES 50.0 1/2 RIGHT-OF-WAY AS PARADISE MOUNTAIN ESTATES INDICATES 75.0 1/2 RIGHT-OF-WAY
- (5) ● - INDICATES 3/8" PIN MKD L.S. 4680 FOUND FROM JOB # 73-65



Z-2018-256  
ROBERT F. MELLE  
REGISTERED LAND SURVEYOR  
TUCSON, ARIZONA  
JOB # 26-135