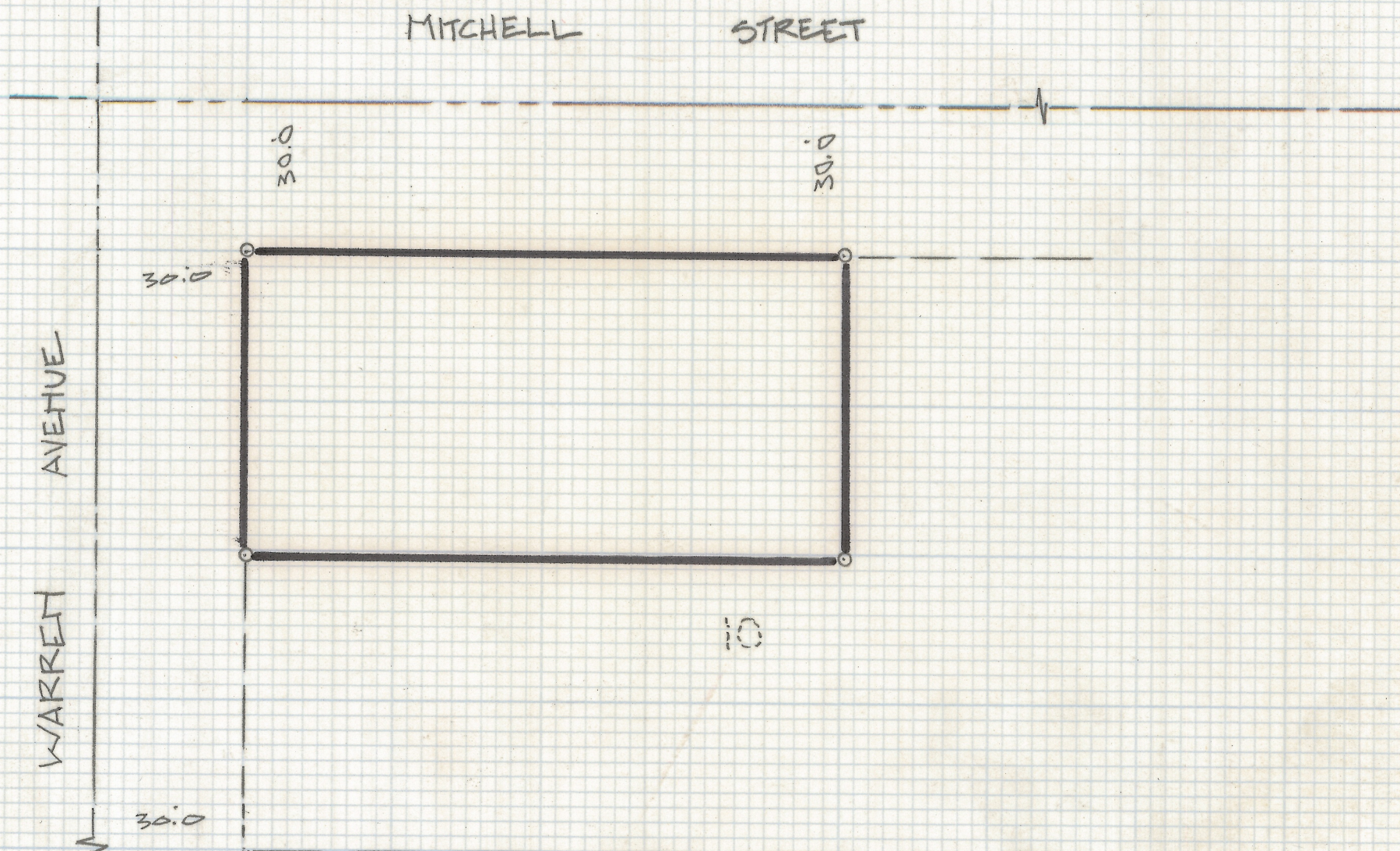


DISCLAIMER:

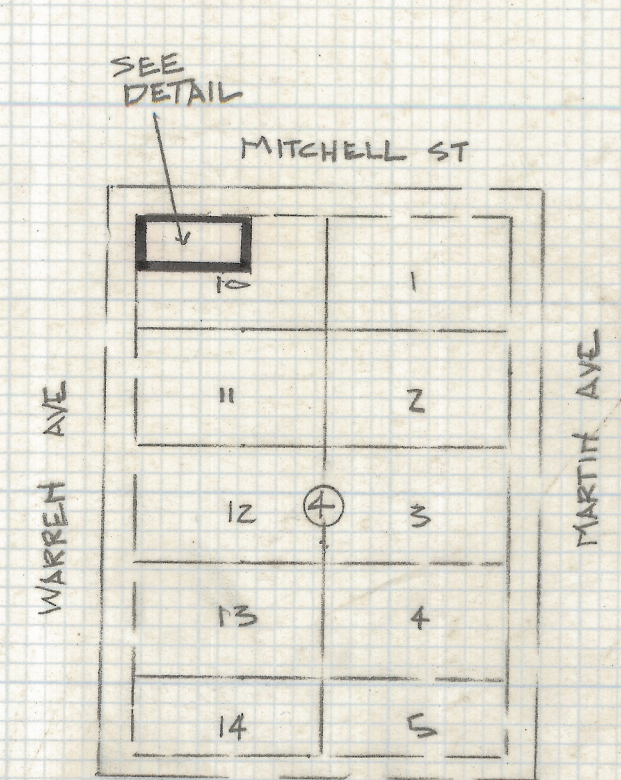
This unrecorded Record of Survey was donated to the City of Tucson. The City of Tucson provides this data for your personal use "as is." Additionally, the City of Tucson provides this information with the understanding that it is not guaranteed to be accurate, correct or complete and conclusions drawn from such information are the responsibility of the user.



DETAIL
SCALE 1"=30.0'

RESULTS OF SURVEY

OF A PORTION OF LOT 10 BLOCK 4 SAMOS SUBDIVISION
RECORDED IN BOOK 5 OF MAPS AND PLATS AT PAGE 4 IN THE
OFFICE OF THE PIMA COUNTY RECORDER PIMA COUNTY, ARIZONA



COPPER ST.
LOCATION PLAT
SCALE 1"=200'

NOTES

- (1) O INDICATES 1/2" PIN SET MKD L.S 4680 UNLESS NOTED
- (2) M-MEASURED
- (3) R-MAP OR DEED RECORD

Z-2018-257
ROBERT F. MELLEH
REGISTERED LAND SURVEYOR
TUCSON, ARIZONA
JOB# 86-136