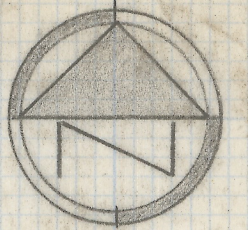


DISCLAIMER:

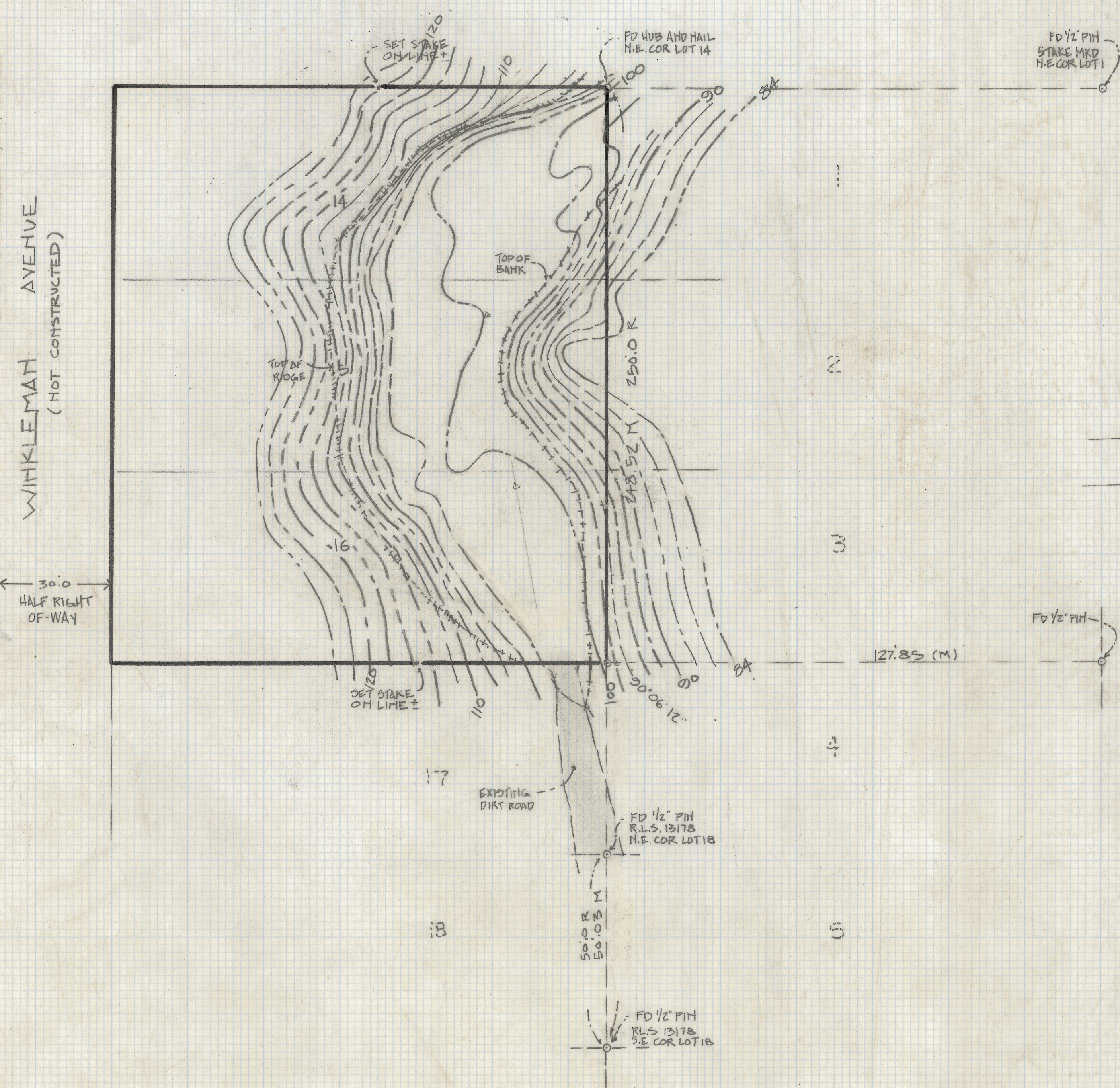
This unrecorded Record of Survey was donated to the City of Tucson. The City of Tucson provides this data for your personal use "as is." Additionally, the City of Tucson provides this information with the understanding that it is not guaranteed to be accurate, correct or complete and conclusions drawn from such information are the responsibility of the user.



14	1
15	2
16	3
17	4
18	5
19	6
20	7
21	8
22	9
23	10
24	11
25	12
26	13

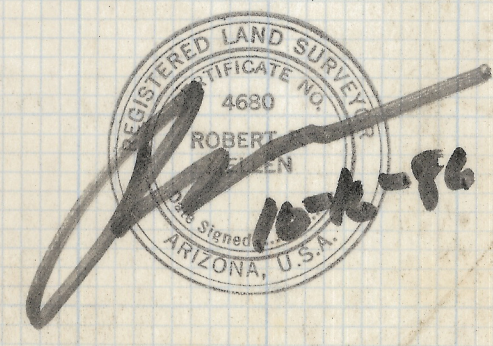
GLOBE STREET

LOCATION PLAT
SCALE 1"=100'



TOPOGRAPHICAL SURVEY

OF
OF A PORTION OF LOTS 14, 15 AND 16 OF SUMMERHAVEN SUBDIVISION RECORDED
IN BOOK 4 OF MAPS AND PLATS AT PAGE 99 IN THE OFFICE OF THE PIMA COUNTY
RECORDER PIMA COUNTY, ARIZONA



Z-2018-258
ROBERT F. MELLEM
REGISTERED LAND SURVEYOR
TUCSON, ARIZONA
JOB # 86-140