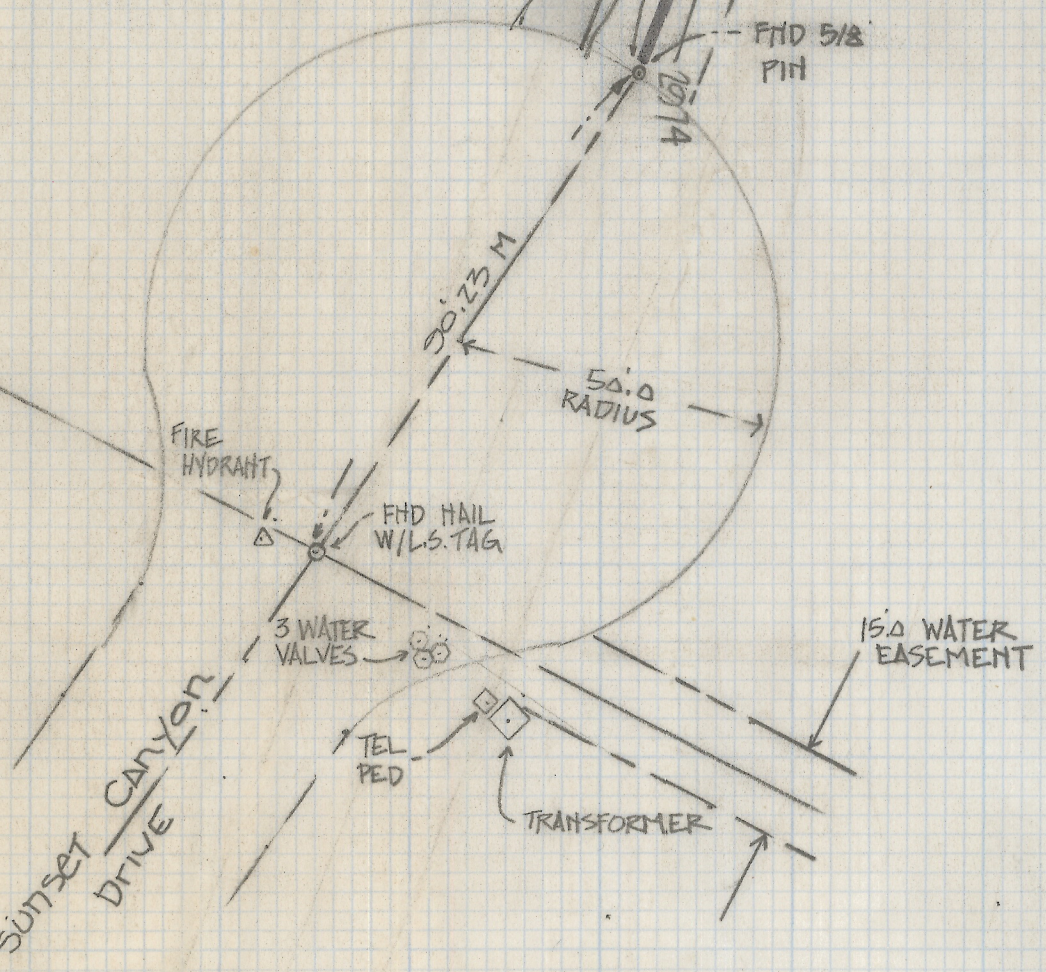
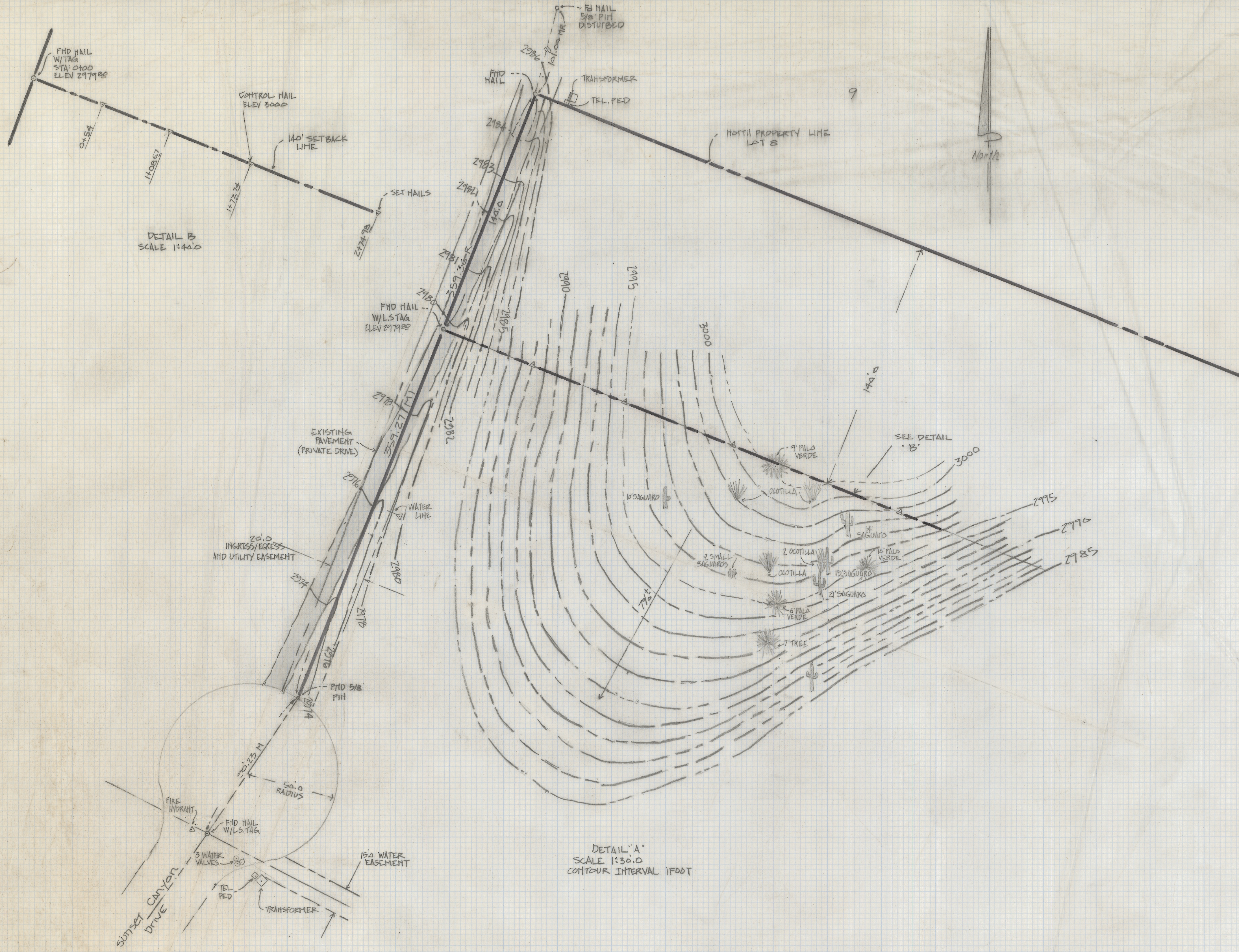


DISCLAIMER:

This unrecorded Record of Survey was donated to the City of Tucson. The City of Tucson provides this data for your personal use "as is." Additionally, the City of Tucson provides this information with the understanding that it is not guaranteed to be accurate, correct or complete and conclusions drawn from such information are the responsibility of the user.



DETAIL 'A'
SCALE 1:30.0
CONTOUR INTERVAL 1 FOOT

- NOTES
- (1) BASIS OF ELEVATIONS TENTATIVE PLAT OF TIERRA COLINA BY GFW ENGINEERS WITH TOPOGRAPHIC SURVEY BY CELLA BARR EVANS ENGINEERS
 - (2) THIS MAP DOES NOT REPRESENT A BOUNDARY SURVEY
 - (3) UTILITIES WERE FIELD LOCATED

5

TOPOGRAPHICAL SURVEY
OF

OF A PORTION OF LOT 3 SUNSET CANYON RECORDED IN BOOK 34 OF MAPS AND PLATS AT PAGE 79 IN THE OFFICE OF THE PIMA COUNTY RECORDER PIMA COUNTY, ARIZONA

Z-2018-266
 ROBERT F. MELLEM
 REGISTERED LAND SURVEYOR
 TUCSON, ARIZONA
 JOB # 86156

CATALINA RIDGE ESTATE
BOOK 30 PAGE 83