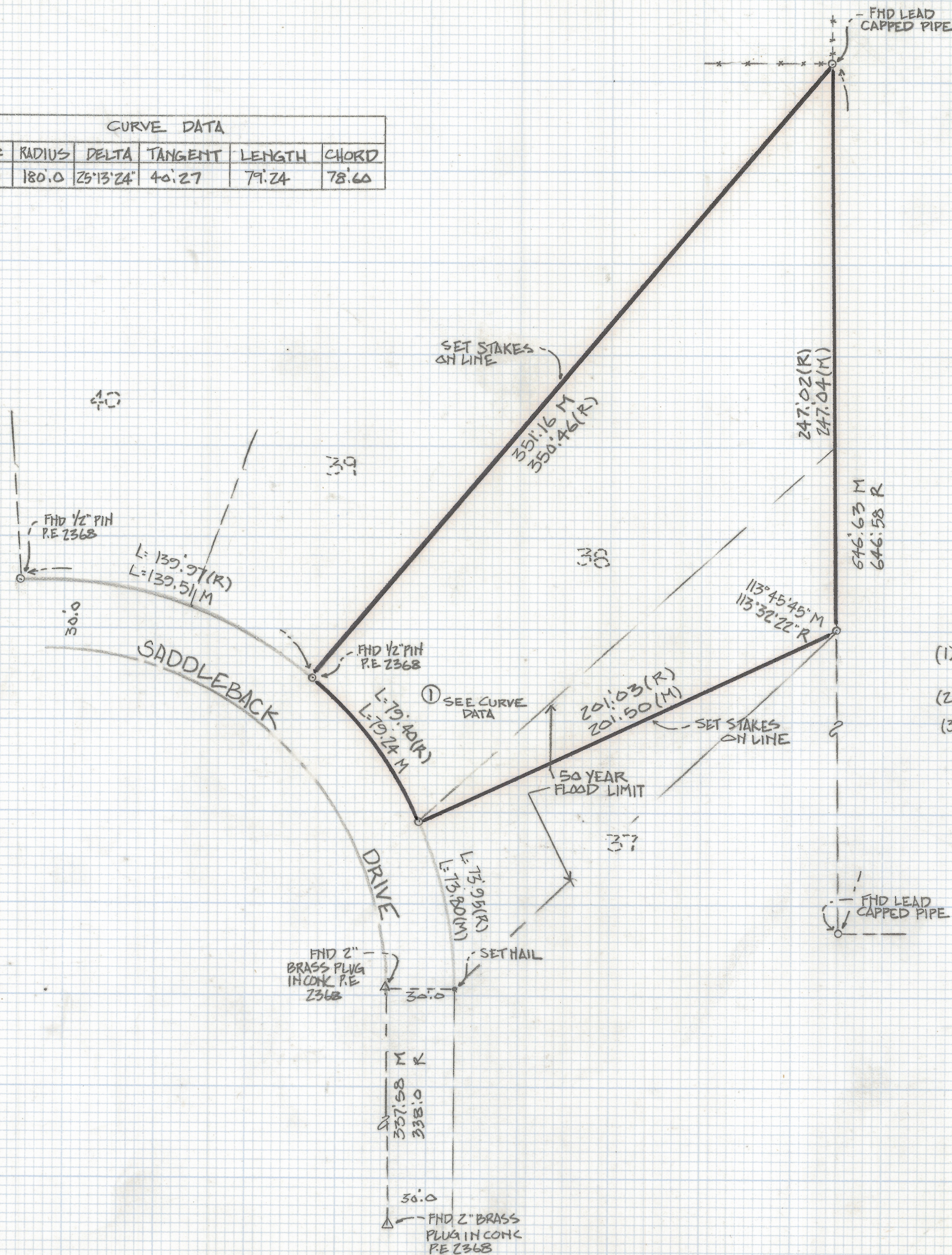
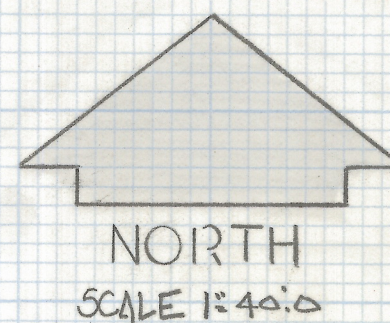


DISCLAIMER:

This unrecorded Record of Survey was donated to the City of Tucson. The City of Tucson provides this data for your personal use "as is." Additionally, the City of Tucson provides this information with the understanding that it is not guaranteed to be accurate, correct or complete and conclusions drawn from such information are the responsibility of the user.

CURVE DATA					
Nº	RADIUS	DELTA	TANGENT	LENGTH	CHORD
1	180.0	25°13'24"	40.27	79.24	78.60

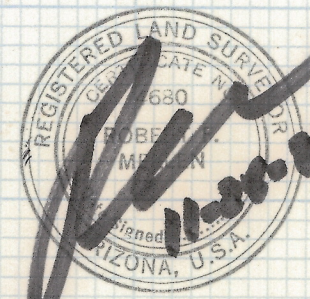


NOTES

- (1) Q INDICATES SET 1/2" PIN MKD L.S. 4680 UNLESS NOTED
- (2) M- MEASURED
- (3) R- MAP OR DEED RECORD

RESULTS OF SURVEY

OF LOT 38 BEAR CREEK RANCH RECORDED IN BOOK 23 OF MAPS AND PLATS AT PAGE 62 IN THE OFFICE OF THE PIMA COUNTY RECORDER PIMA COUNTY, ARIZONA



Z-2018-270
 ROBERT F. MELLEN
 REGISTERED LAND SURVEYOR
 TUCSON, ARIZONA
 JOB# 86-161