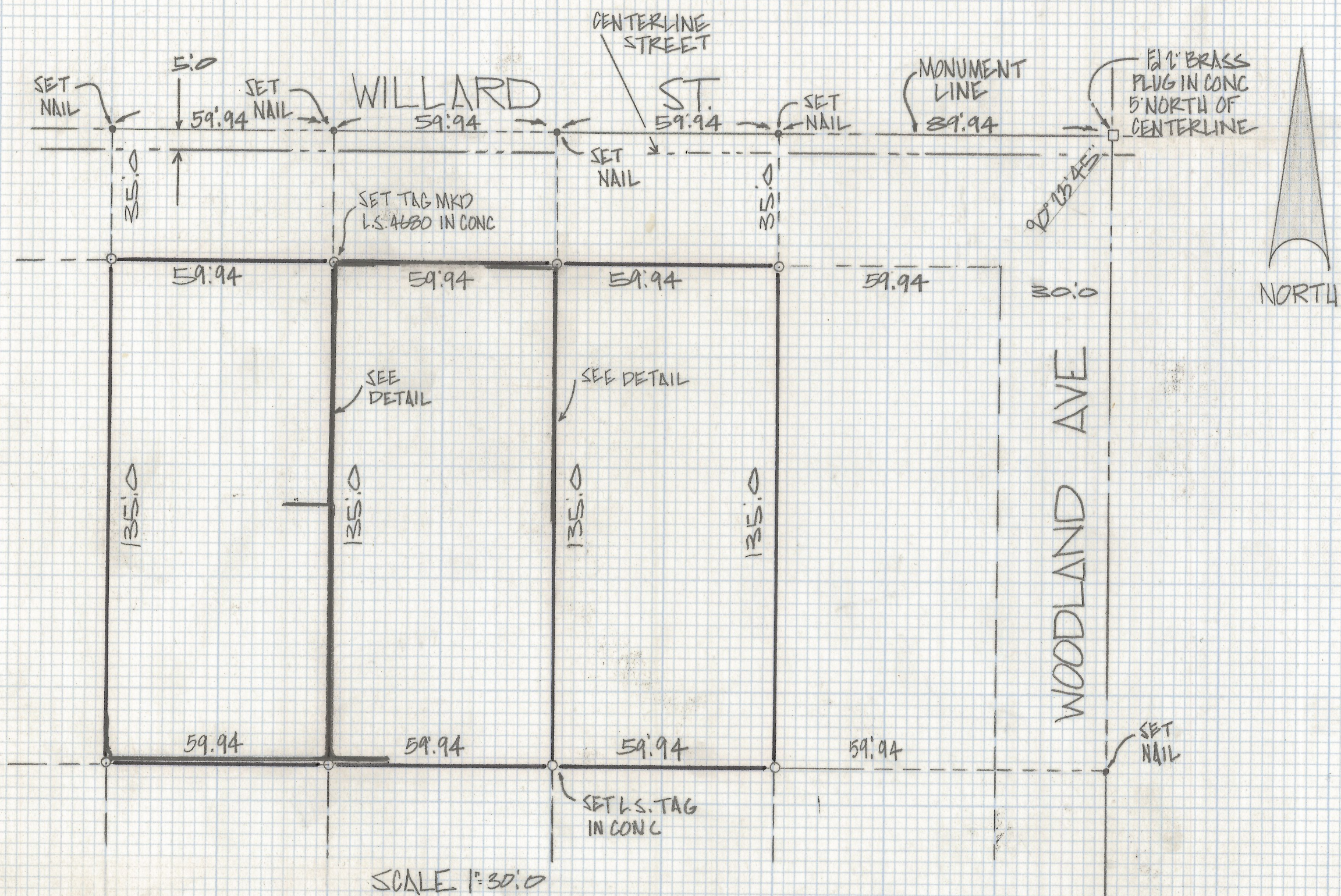


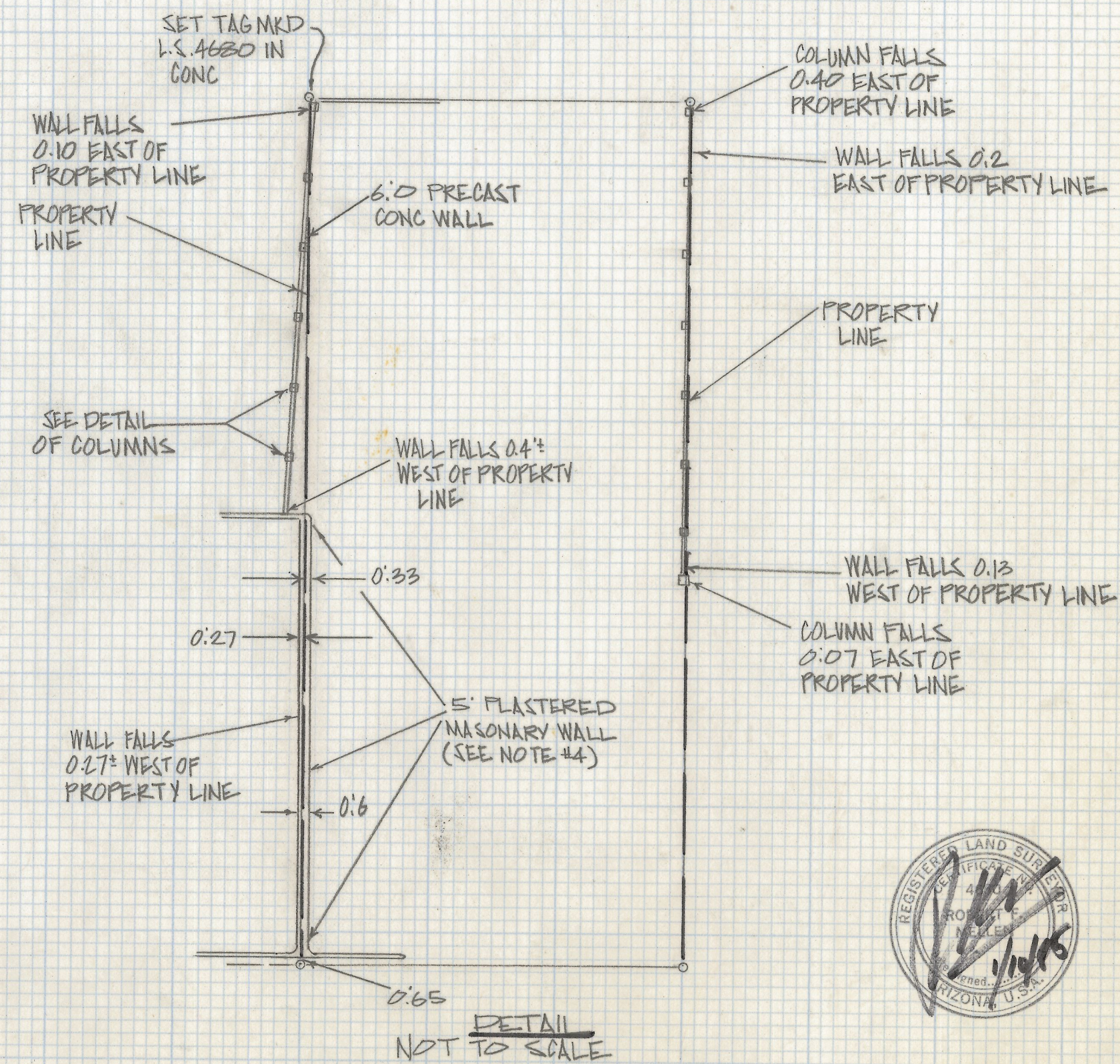
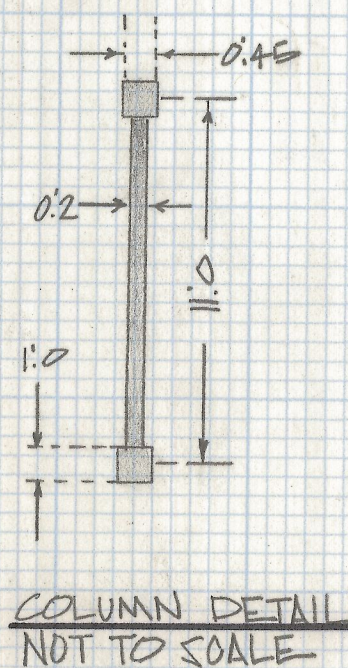
DISCLAIMER:

This unrecorded Record of Survey was donated to the City of Tucson. The City of Tucson provides this data for your personal use "as is." Additionally, the City of Tucson provides this information with the understanding that it is not guaranteed to be accurate, correct or complete and conclusions drawn from such information are the responsibility of the user.



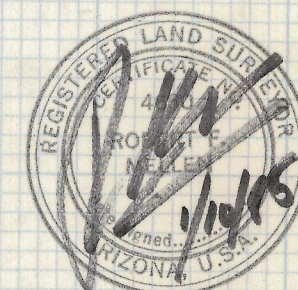
NOTES

- (1) ϕ INDICATES SET 1/2" FIN MKD L.S. 4680 UNLESS NOTED
- (2) M - MEASURED
- (3) R - MAP OR DEED RECORD
- (4) 3 1/2 x 0.5' FRAMED WALL SET ON TOP OF PLASTERED WALL THIS AREA



RESULTS OF SURVEY

OF A PORTION OF LOTS 1 AND 2 BLOCK 7 OF AVONDALE SUBDIVISION RECORDED IN BOOK 4 OF MAPS AND FLATS AT PAGE 42 IN THE OFFICE OF THE PIMA COUNTY RECORDER PIMA COUNTY ARIZONA



Z-2018-280
ROBERT F. MELLEN
REGISTERED LAND SURVEYOR
TUCSON, ARIZONA
JOB # 25-5