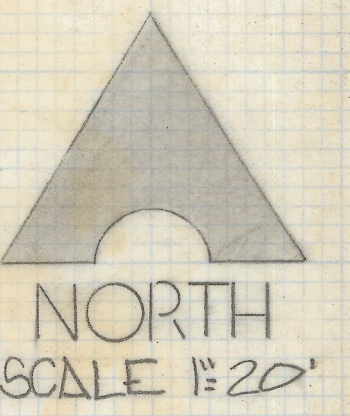


DISCLAIMER:

This unrecorded Record of Survey was donated to the City of Tucson. The City of Tucson provides this data for your personal use "as is." Additionally, the City of Tucson provides this information with the understanding that it is not guaranteed to be accurate, correct or complete and conclusions drawn from such information are the responsibility of the user.

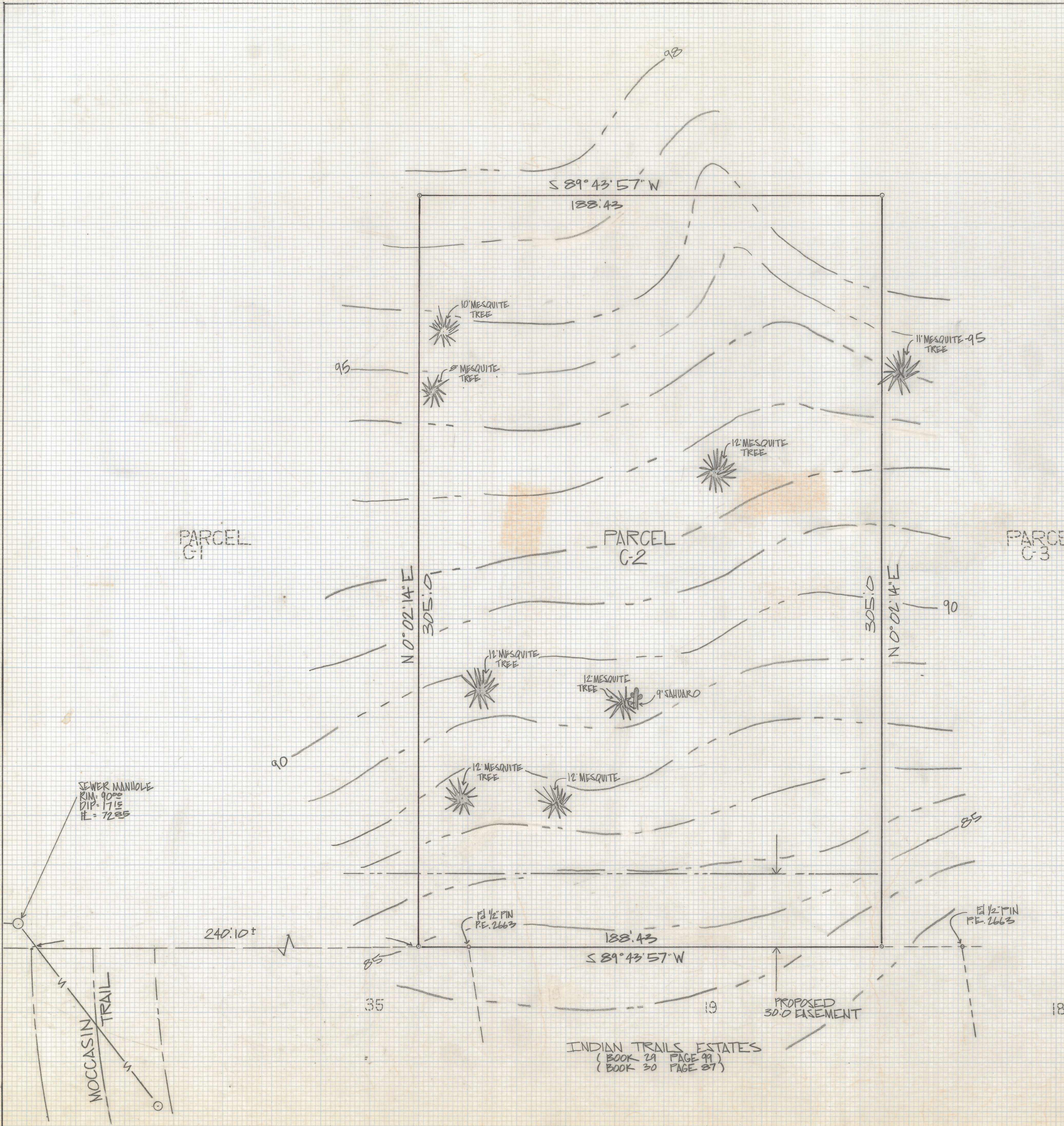


NOTES

- (1) ♀ INDICATES SET 1/2" PIN MKD L.S. 4680 UNLESS NOTED
- (2) SEE JOB# 82-39
- (3) SEWER DATA PIMA COUNTY, ARIZONA PLAN N° G-84-07
- (4) BENCH MARK DATUM, PIMA COUNTY WASTE WATER MANAGEMENT, DATUM TOP OF CSTG MANHOLE #110 2790-08 INVERT 2728.85 PLAN G 84-07
- (5) CONTOUR INTERVAL 1 FOOT

TOPOGRAPHICAL SURVEY

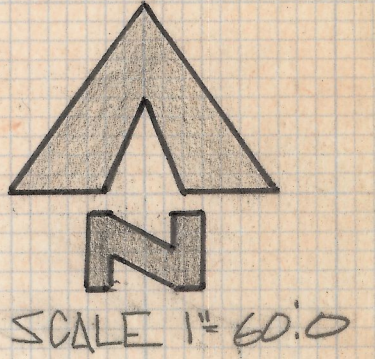
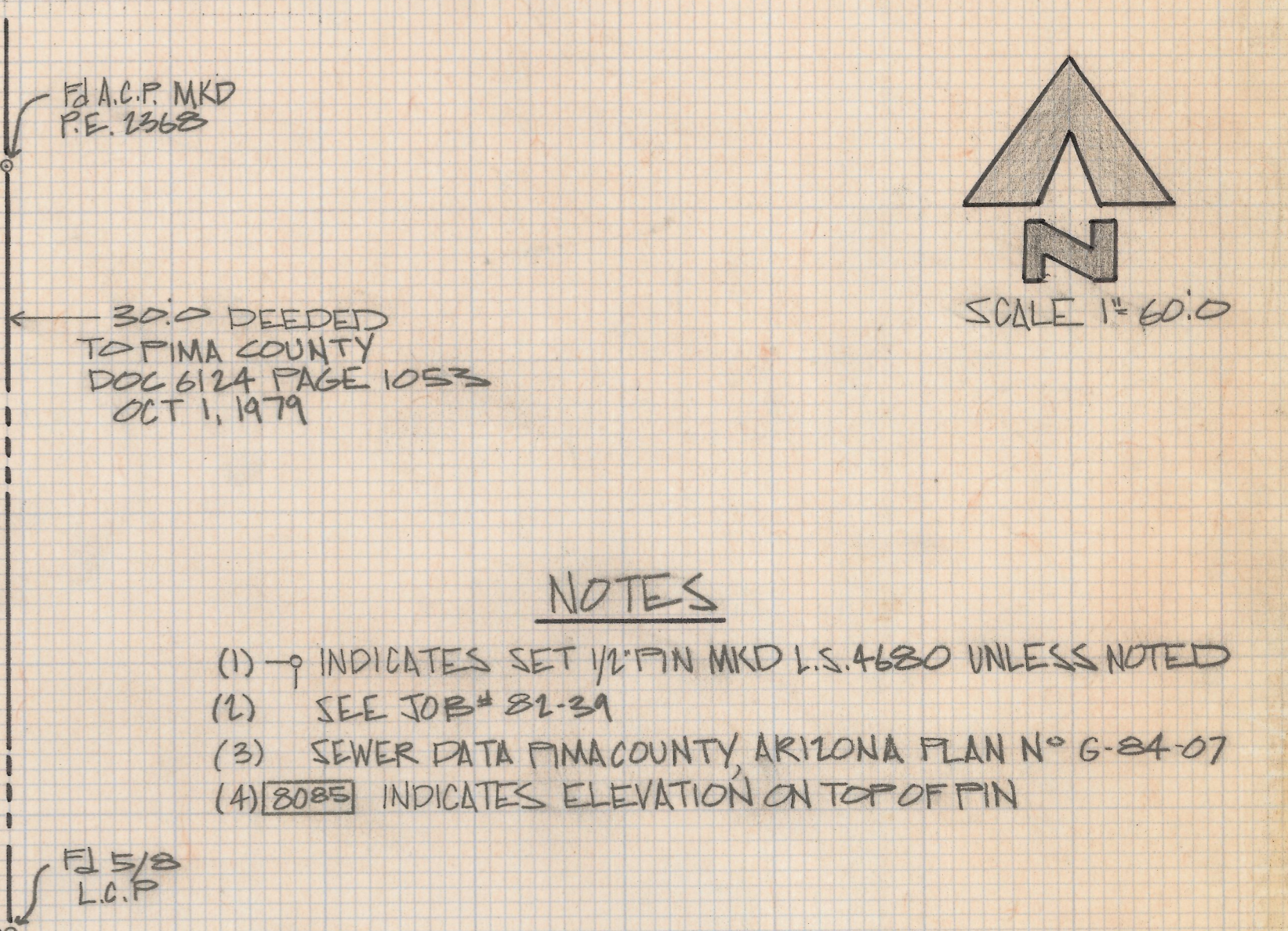
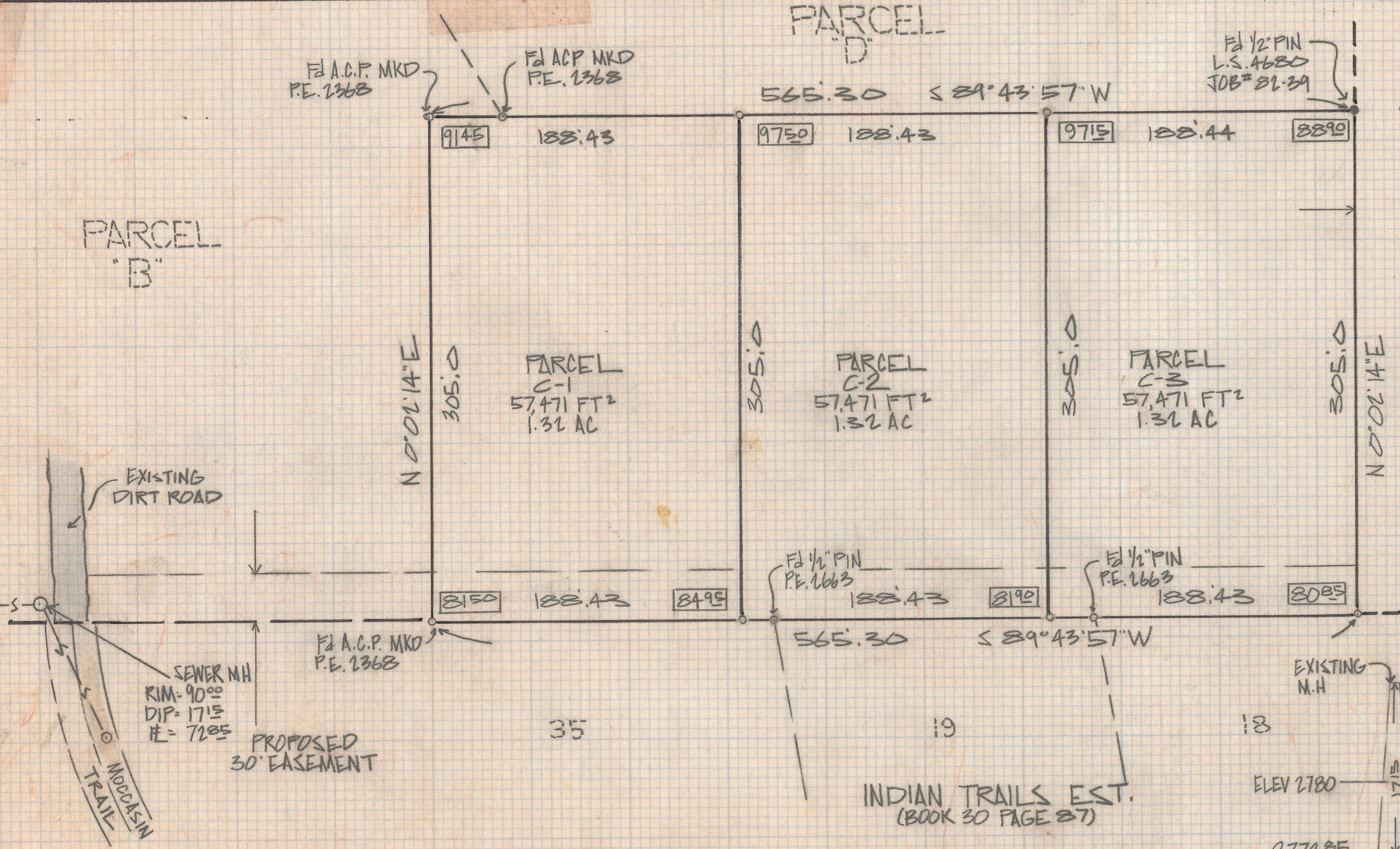
OF
PARCEL C-2 BEING A PORTION OF THE NORTHWEST QUARTER OF THE SOUTHWEST QUARTER SECTION 2 TOWNSHIP 13 SOUTH RANGE 15 EAST GILA AND SALT RIVER BASE AND MERIDIAN, PIMA COUNTY ARIZONA



INDIAN TRAILS ESTATES
(BOOK 29 PAGE 99)
(BOOK 30 PAGE 87)



Z-2518-285 1/2
ROBERT F. MELLEN
REGISTERED LAND SURVEYOR
TUCSON, ARIZONA
JOB# 85-14



NOTES

- (1) → INDICATES SET 1/2" PIN MKD L.S. 4680 UNLESS NOTED
- (2) SEE JOB # 82-39
- (3) SEWER DATA PIMACOUNTY ARIZONA PLAN N° G-84-07
- (4) [8085] INDICATES ELEVATION ON TOP OF PIN

RESULTS OF SURVEY

OF A PORTION OF THE NORTHWEST QUARTER OF THE SOUTHWEST QUARTER SECTION 8 TOWNSHIP 13 SOUTH, RANGE 15 EAST, GILA AND SALT RIVER BASE AND MERIDIAN, PIMA COUNTY ARIZONA



PROFILE
 SCALE 1"=100' HORIZ
 1"=10' VERT
 Z-2018-285 2/2
 ROBERT F. MELLEN
 REGISTERED LAND SURVEYOR
 TUCSON, ARIZONA
 JOB # 85-14