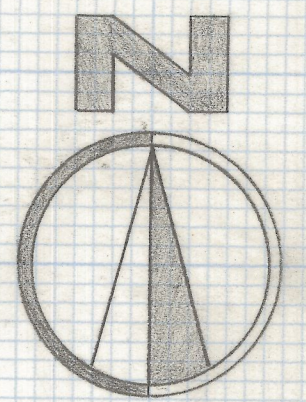


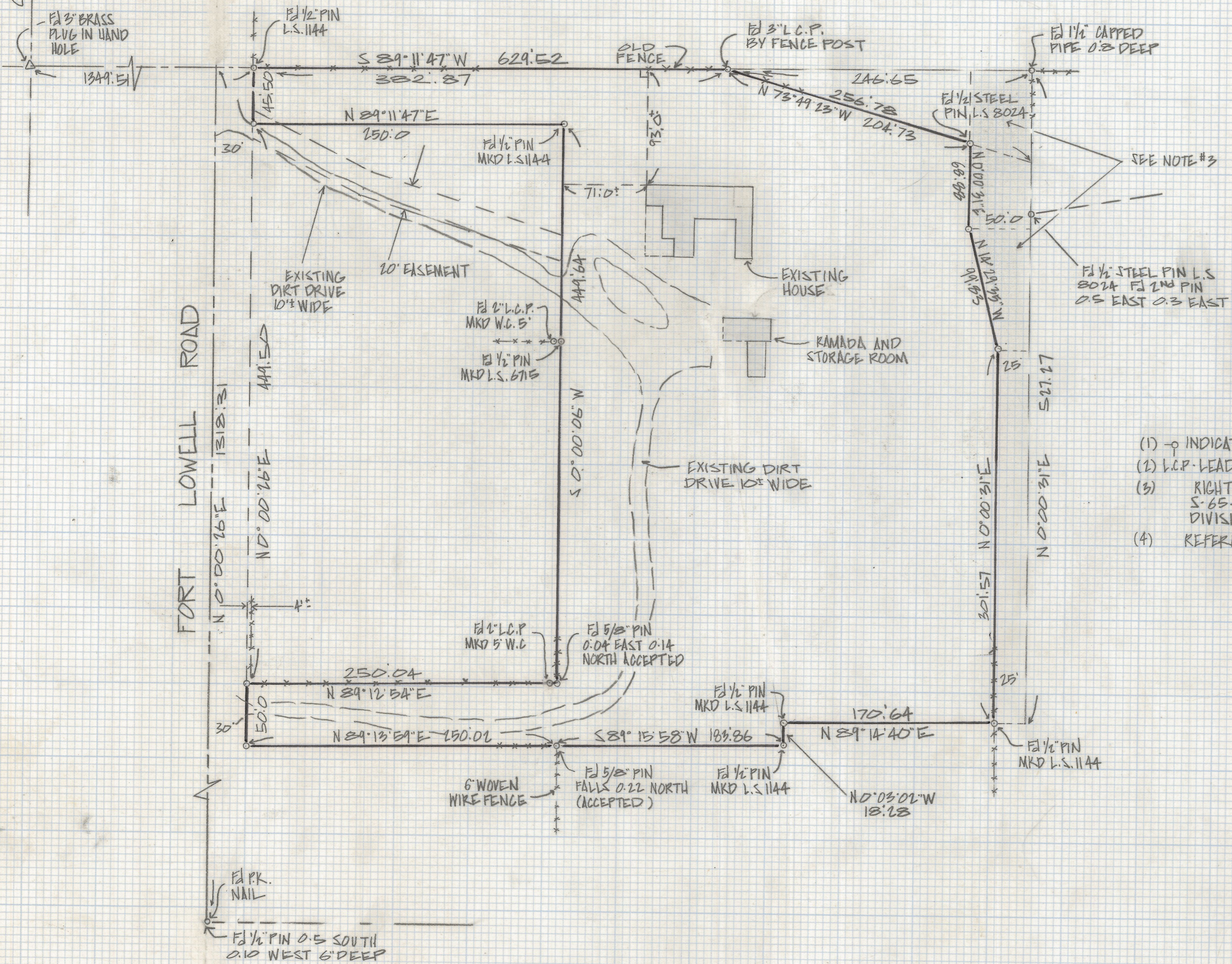
DISCLAIMER:

This unrecorded Record of Survey was donated to the City of Tucson. The City of Tucson provides this data for your personal use "as is." Additionally, the City of Tucson provides this information with the understanding that it is not guaranteed to be accurate, correct or complete and conclusions drawn from such information are the responsibility of the user.



SCALE 1"=60'

COLUMBUS BLVD



NOTES

- (1) - \circ INDICATES SET 1/2" PIN MKD L.S. 4680 UNLESS NOTED
- (2) L.C.P. - LEAD CAPPED PIPE
- (3) RIGHT-OF-WAY ACQUIRED BY CITY OF TUCSON SEE PLAN N° S-65-23 SHEET 10F1 PER CITY OF TUCSON ENGINEERING DIVISION
- (4) REFERENCE BLANTON AND CO. JOB# B71-17

RESULTS OF SURVEY

OF A PORTION OF THE NORTHEAST QUARTER OF THE NORTHEAST QUARTER SECTION 34 TOWNSHIP 13 SOUTH RANGE 14 EAST GILA AND SALT RIVER BASE AND MERIDIAN PIMA COUNTY ARIZONA



Z-2018-289
ROBERT F. MELLEN
REGISTERED LAND SURVEYOR
TUCSON, ARIZONA
JOB# 35-19