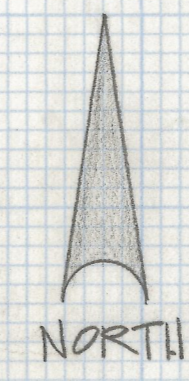
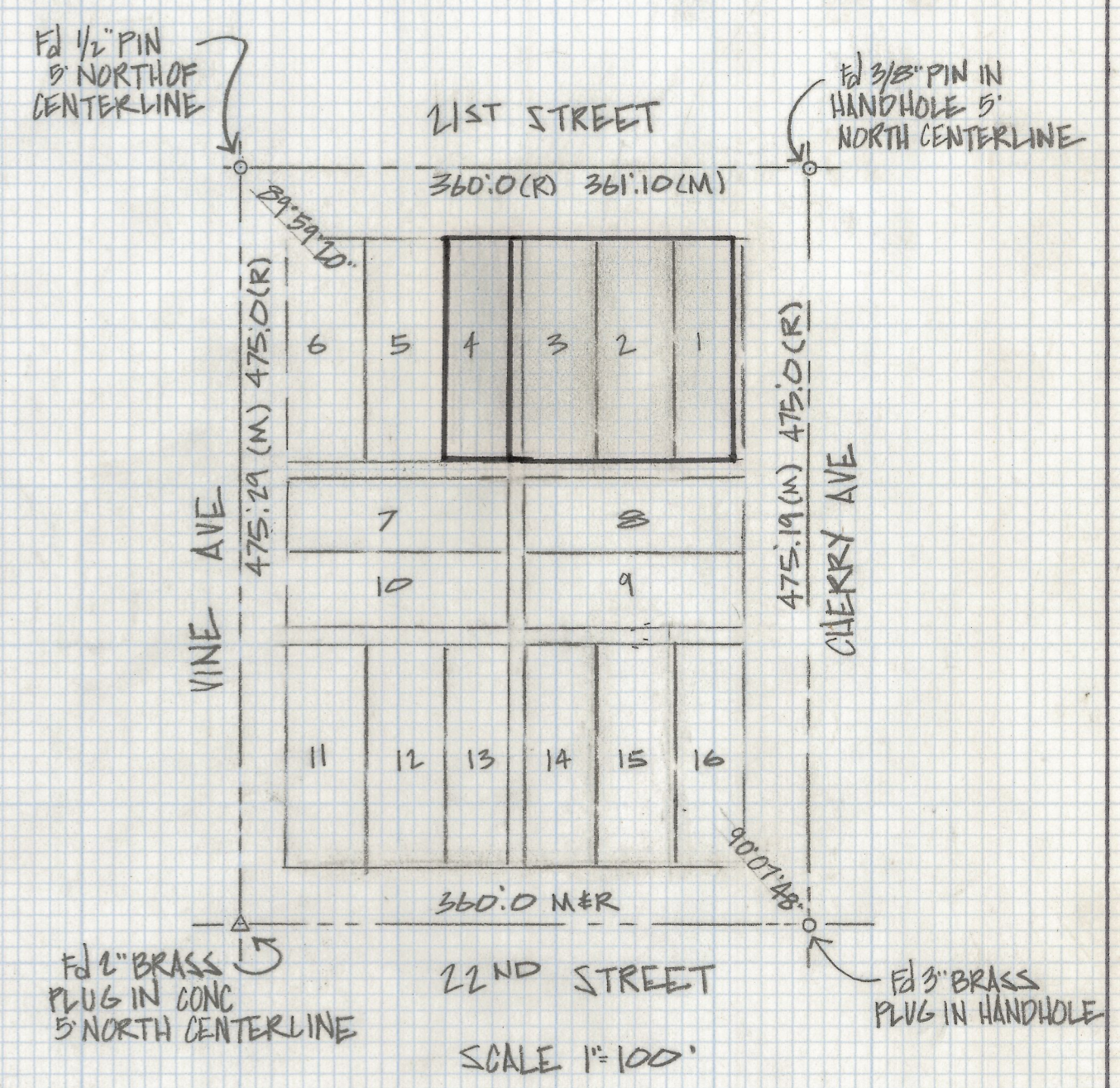
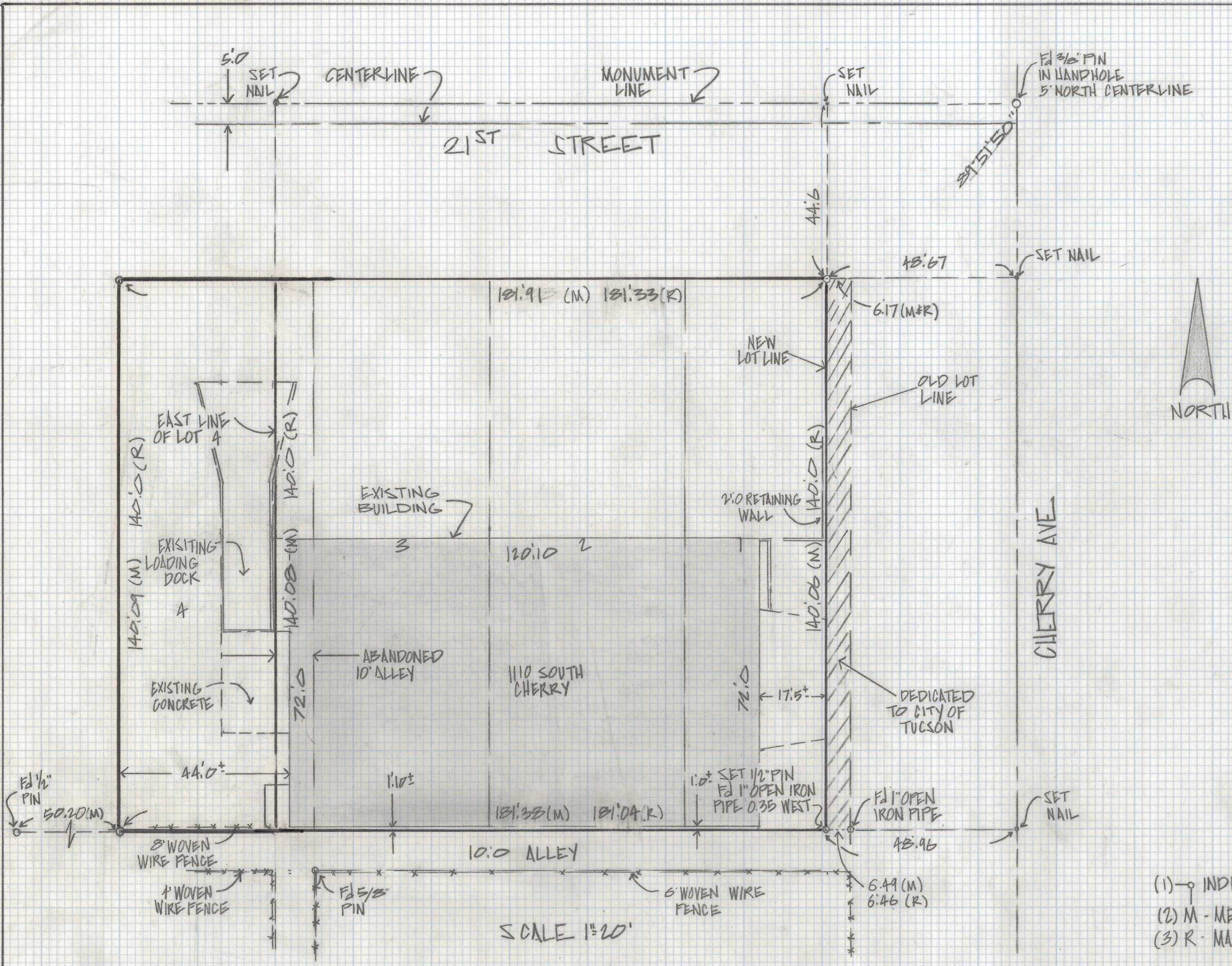


DISCLAIMER:

This unrecorded Record of Survey was donated to the City of Tucson. The City of Tucson provides this data for your personal use "as is." Additionally, the City of Tucson provides this information with the understanding that it is not guaranteed to be accurate, correct or complete and conclusions drawn from such information are the responsibility of the user.



NOTES

- (1) - indicates SET 1/2" PIN MKD L.S. 4680 UNLESS NOTED
- (2) M - MEASURED
- (3) R - MAP OR DEED RECORD

RESULTS OF SURVEY

OF A PORTION OF LOT 1, AND ALL OF LOTS 2, 3, 4 AND ABANDONED ALLEY
BLOCK 26 OF MONTCLAIR ADDITION, RECORDING IN BOOK 2 OF MAPS
AND PLATS AT PAGE 33B IN THE OFFICE OF THE PIMA COUNTY RECORDER
PIMA COUNTY, ARIZONA



Z-2018-290
ROBERT F. MELLEN
REGISTERED LAND SURVEYOR
TUCSON, ARIZONA
JOB # 85-10