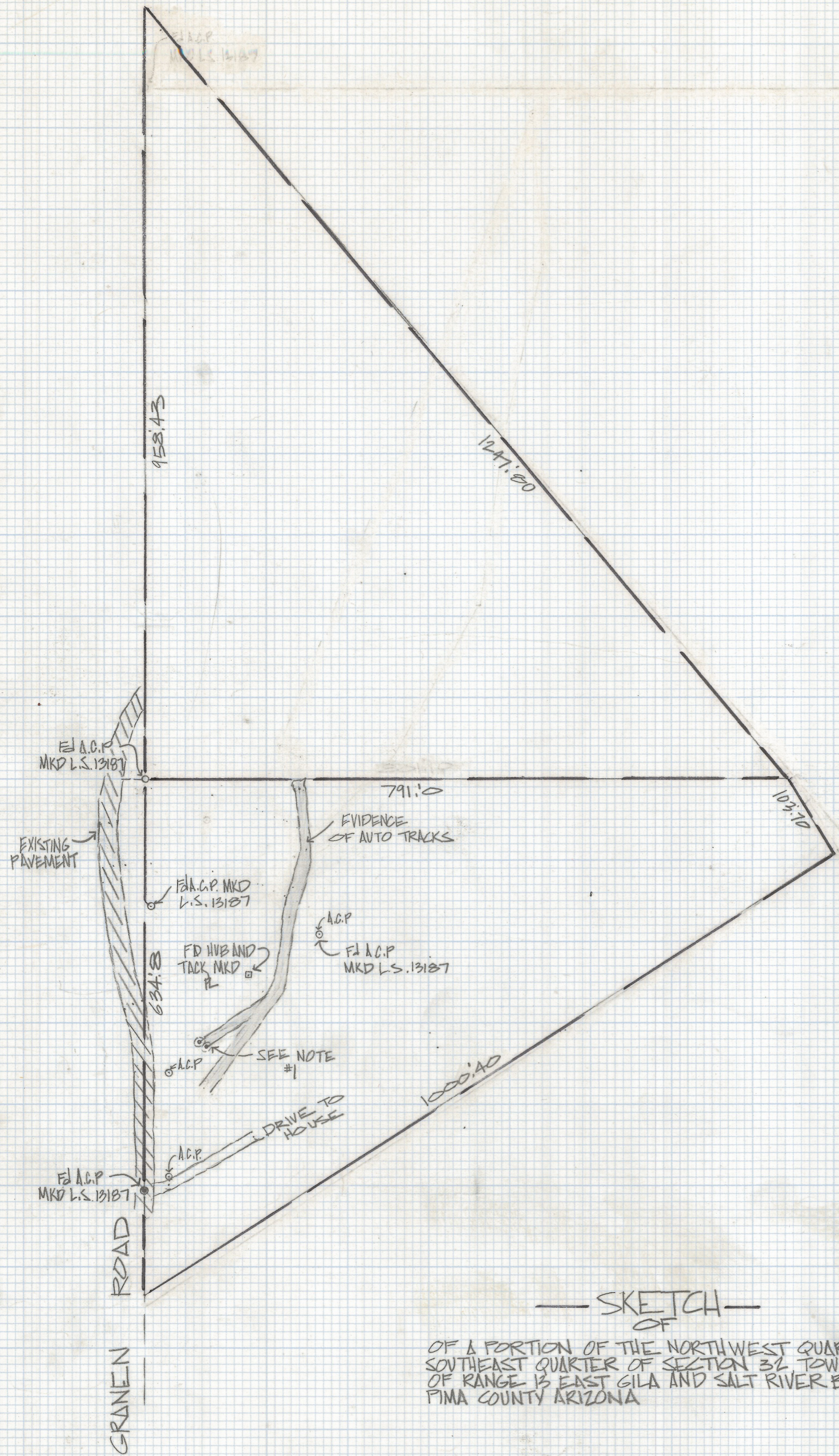
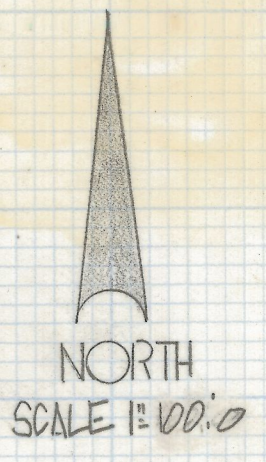


DISCLAIMER:

This unrecorded Record of Survey was donated to the City of Tucson. The City of Tucson provides this data for your personal use "as is." Additionally, the City of Tucson provides this information with the understanding that it is not guaranteed to be accurate, correct or complete and conclusions drawn from such information are the responsibility of the user.

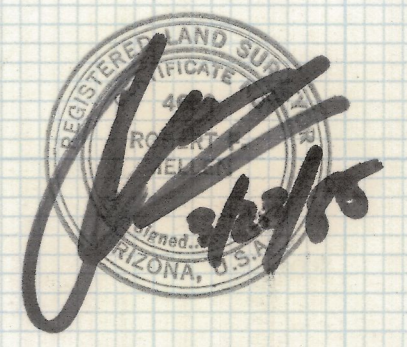


NOTE

(1) INDENTATION AND PILES OF ROCKS WHICH ARE REPORTED TO HAVE ONCE BEEN THE POSITION OF TWO IRON POST

— SKETCH —
OF

OF A PORTION OF THE NORTH WEST QUARTER OF THE
SOUTHEAST QUARTER OF SECTION 32 TOWNSHIP 13 SOUTH
OF RANGE 13 EAST GILA AND SALT RIVER BASE AND MERIDIAN
PIMA COUNTY ARIZONA



Z-2018-295
ROBERT F. MELLEN
REGISTERED LAND SURVEYOR
TUCSON, ARIZONA
JOB # 85-27