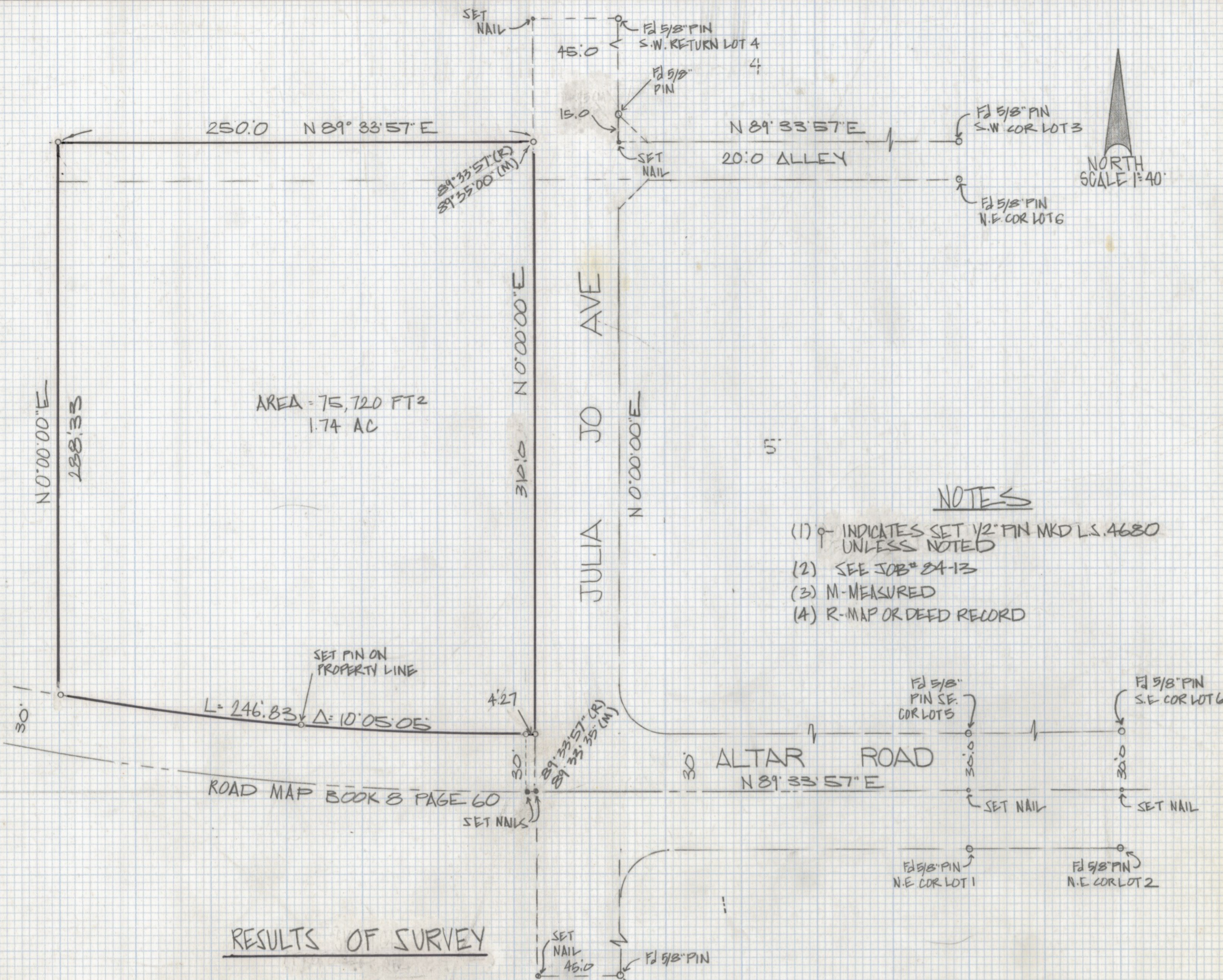


# **DISCLAIMER:**

**This unrecorded Record of Survey was donated to the City of Tucson. The City of Tucson provides this data for your personal use "as is." Additionally, the City of Tucson provides this information with the understanding that it is not guaranteed to be accurate, correct or complete and conclusions drawn from such information are the responsibility of the user.**





AREA = 75,720 FT<sup>2</sup>  
1.74 AC

NOTES

- (1)  $\circ$  INDICATES SET 1/2" PIN MKD L.S. 4680 UNLESS NOTED
- (2) SEE JOB # 84-13
- (3) M-MEASURED
- (4) R-MAP OR DEED RECORD

RESULTS OF SURVEY

A PORTION OF THE NORTHEAST QUARTER OF THE SOUTHWEST QUARTER SECTION 9 TOWNSHIP 16 SOUTH OF RANGE 10 EAST 61A AND SALT RIVER BASE AND MERIDIAN PIMA COUNTY ARIZONA

CURVE DATA						
	N°	RADIUS	DELTA	TANGENT	LENGTH	CHORD
R	1	1402.40	10° 05' 05"	123.74	246.83	246.52
C	2	1432.40	30° 25' 15"	389.45	760.52	751.62



Z-2018-300  
ROBERT F. MELLEN  
REGISTERED LAND SURVEYOR  
TUCSON, ARIZONA  
JOB # 85-36