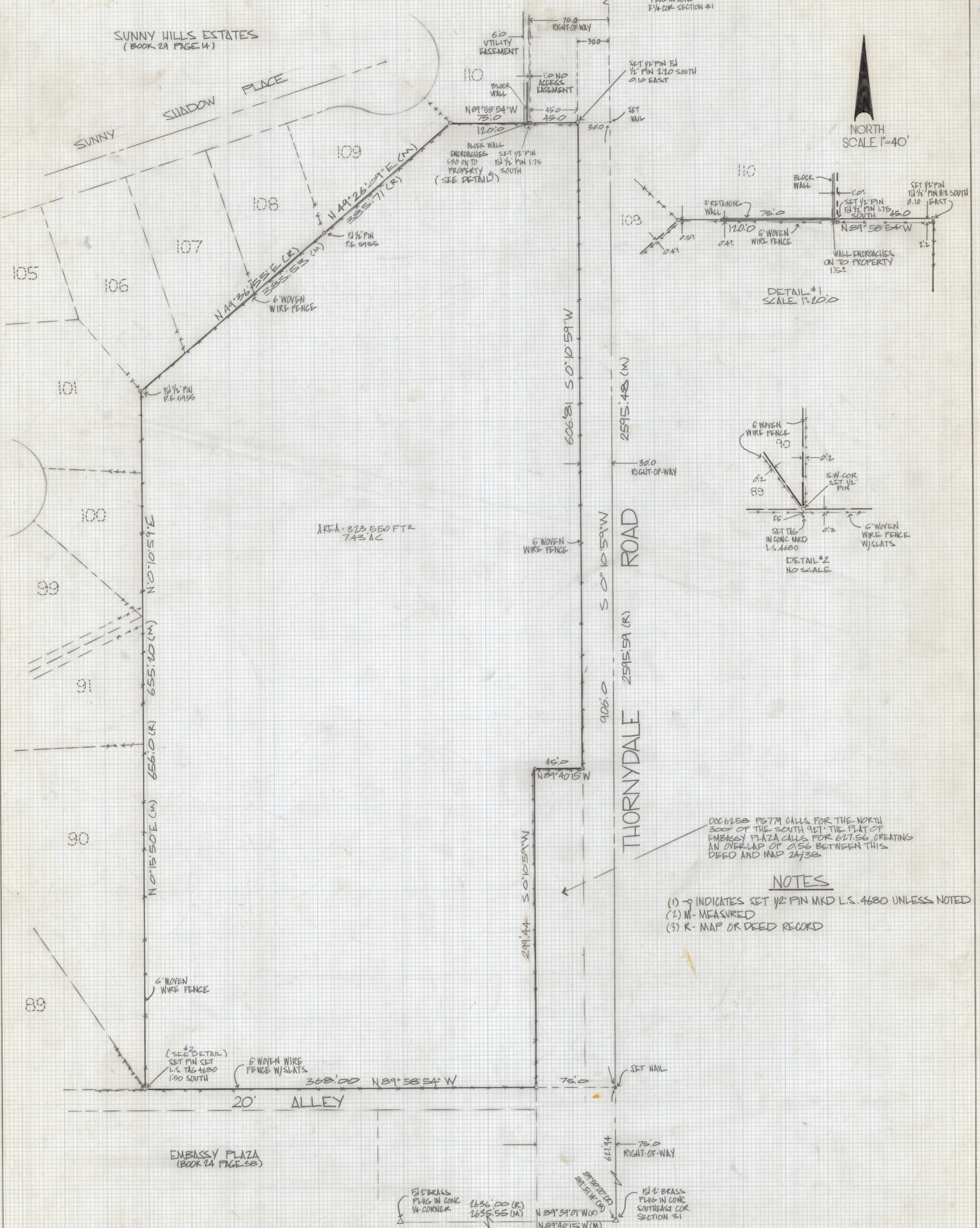


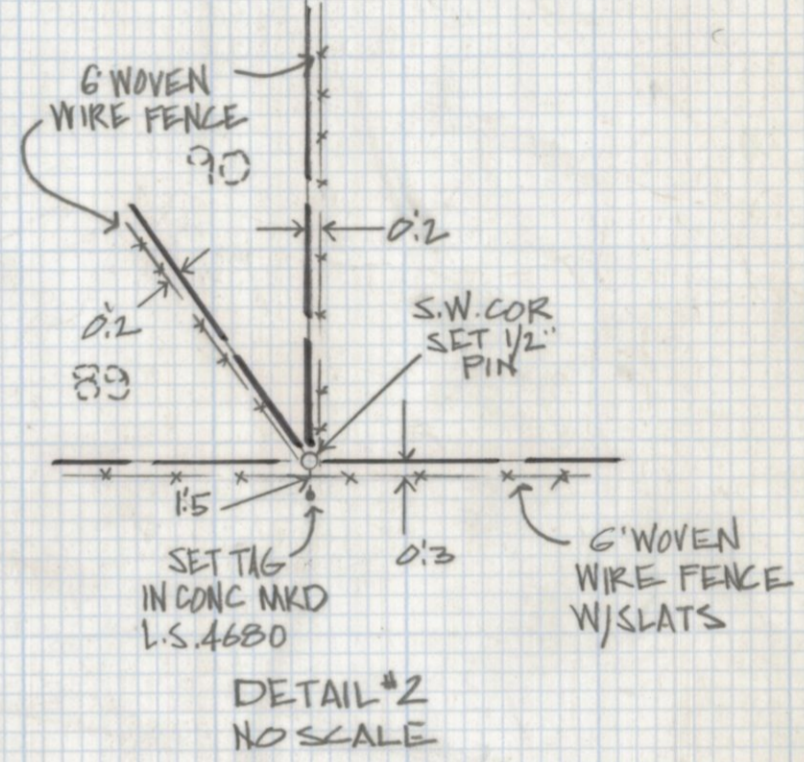
DISCLAIMER:

This unrecorded Record of Survey was donated to the City of Tucson. The City of Tucson provides this data for your personal use "as is." Additionally, the City of Tucson provides this information with the understanding that it is not guaranteed to be accurate, correct or complete and conclusions drawn from such information are the responsibility of the user.

SUNNY HILLS ESTATES
(BOOK 24 PAGE 14)



DETAIL #1
SCALE 1"=20.0'



DOC 6258 P274 CALLS FOR THE NORTH 300' OF THE SOUTH 927' THE PLAT OF EMBASSY PLAZA CALLS FOR 621.56, CREATING AN OVERLAP OF 0.56 BETWEEN THIS DEED AND MAP 24/38

NOTES

- (1) - 9 INDICATES SET 1/2" PIN MKD L.S. 4680 UNLESS NOTED
- (2) M - MEASURED
- (3) R - MAP OR DEED RECORD

RESULTS OF SURVEY

OF A PORTION OF THE EAST HALF OF THE SOUTHEAST QUARTER SECTION THIRTY-ONE TOWNSHIP TWELVE SOUTH OF RANGE 13 EAST GILA AND SALT RIVER BASE AND MERIDIAN PIMA COUNTY, ARIZONA



Z-2018-302
ROBERT F. MELLEN
REGISTERED LAND SURVEYOR
TUCSON, ARIZONA
JOB # 85-59