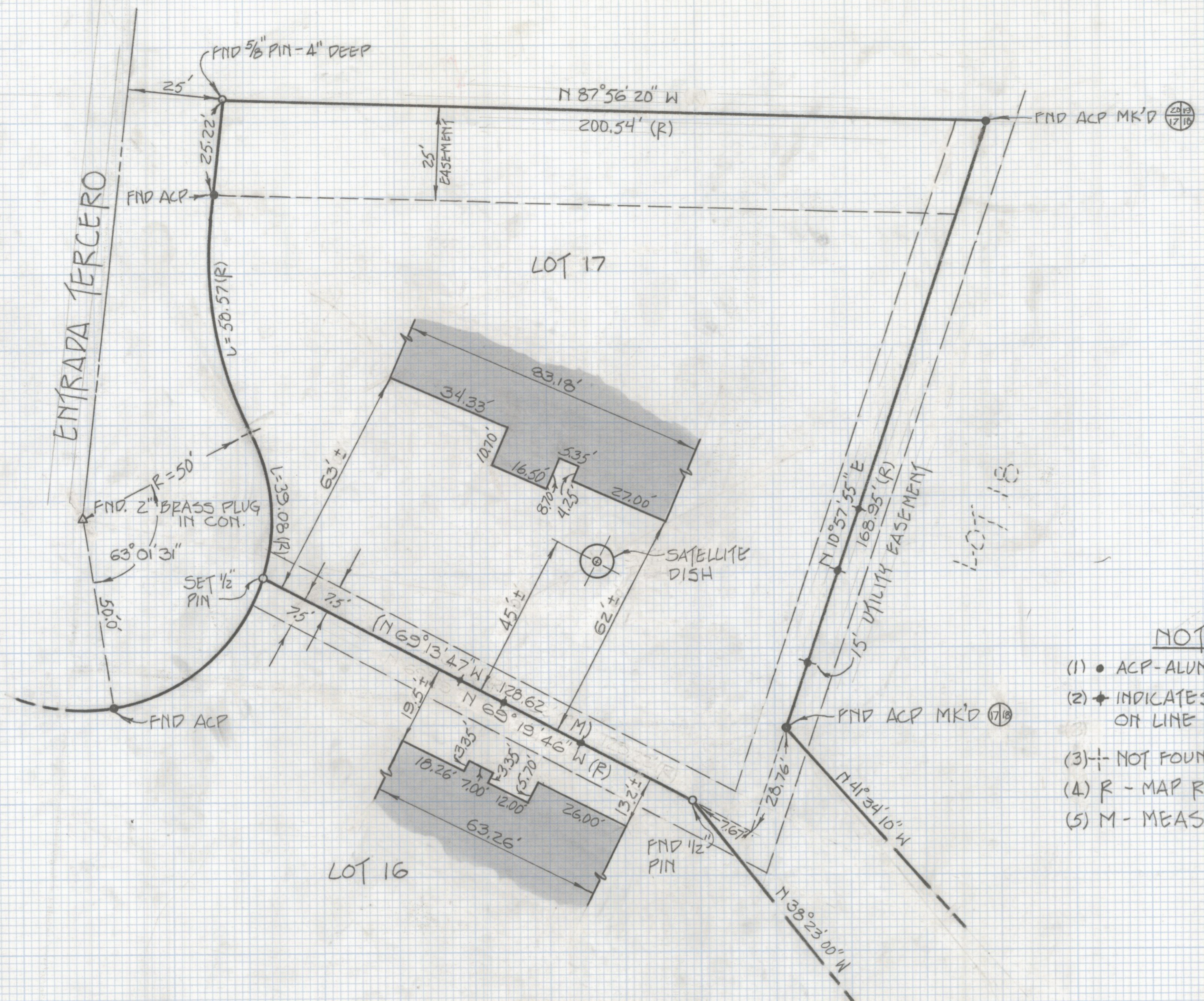
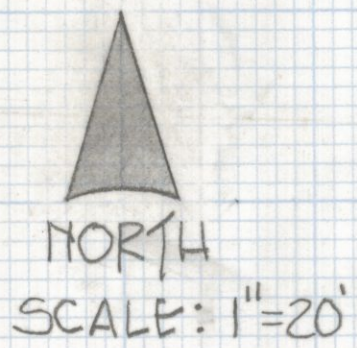


# **DISCLAIMER:**

**This unrecorded Record of Survey was donated to the City of Tucson. The City of Tucson provides this data for your personal use "as is." Additionally, the City of Tucson provides this information with the understanding that it is not guaranteed to be accurate, correct or complete and conclusions drawn from such information are the responsibility of the user.**



- NOTES
- (1) • ACP - ALUMINUM CAPPED PIN
  - (2) ✦ INDICATES GOD NAILS SET ON LINE
  - (3) ± NOT FOUND OR SET
  - (4) R - MAP RECORD
  - (5) M - MEASURED

SKETCH

SHOWING IMPROVEMENTS NEAR LINES BETWEEN LOTS 16, 17, & 18, CATALINA FOOTHILLS ESTATES NO. 7, AS RECORDED IN BOOK 18 AT PAGE 64 OF MAPS AND PLATS IN THE OFFICE OF THE PIMA COUNTY RECORDER, PIMA COUNTY, ARIZONA



Z-2018-303  
 ROBERT P. MELLEN  
 REGISTERED LAND SURVEYOR  
 TUCSON, ARIZONA  
 JOB# 85-40