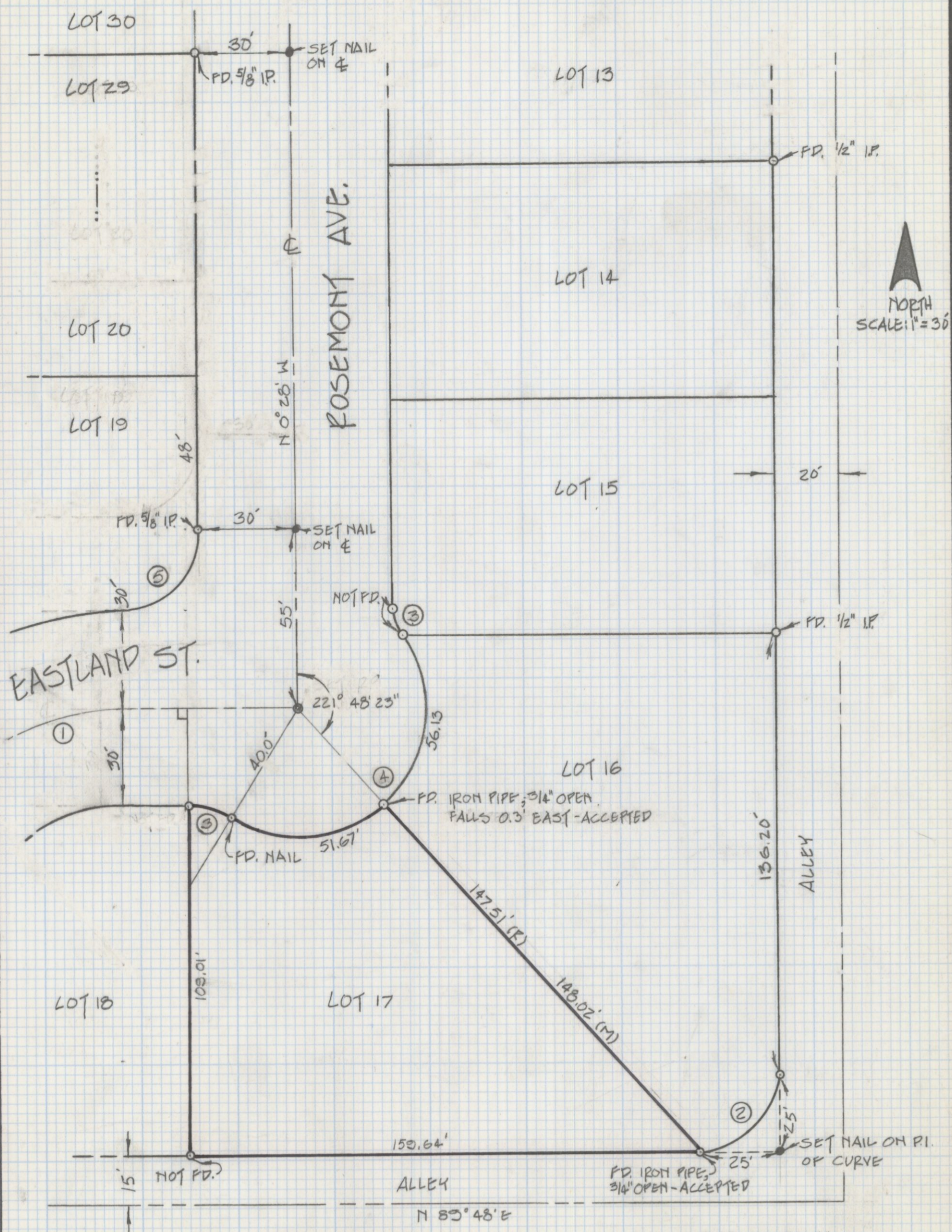


DISCLAIMER:

This unrecorded Record of Survey was donated to the City of Tucson. The City of Tucson provides this data for your personal use "as is." Additionally, the City of Tucson provides this information with the understanding that it is not guaranteed to be accurate, correct or complete and conclusions drawn from such information are the responsibility of the user.



NORTH
 SCALE: 1" = 30'

RESULTS OF SURVEY

OF LINE BETWEEN LOT 16 & 17 EDMUND GARDENS SUBDIVISION AS RECORDED IN BOOK 10 OF MAPS & PLATS AT PAGE 77 IN THE OFFICE OF THE PIMA COUNTY RECORDER, PIMA COUNTY, ARIZONA.

CURVE DATA

	Δ	R	T	L
1	41° 42' 40"	78.90'	30.06'	57.44'
2	90° 16' 00"	24.88'	25.00'	39.39'
3	32° 12' 20"	25.00'	7.22'	14.05'
4	154° 24' 40"	40.00'	—	107.80'
5	90° 00' 00"	25.00'	25.00'	39.27'



Z-2018-307
 ROBERT F. MEULEN
 REGISTERED LAND SURVEYOR
 TUCSON, ARIZONA
 JOB # 85-49