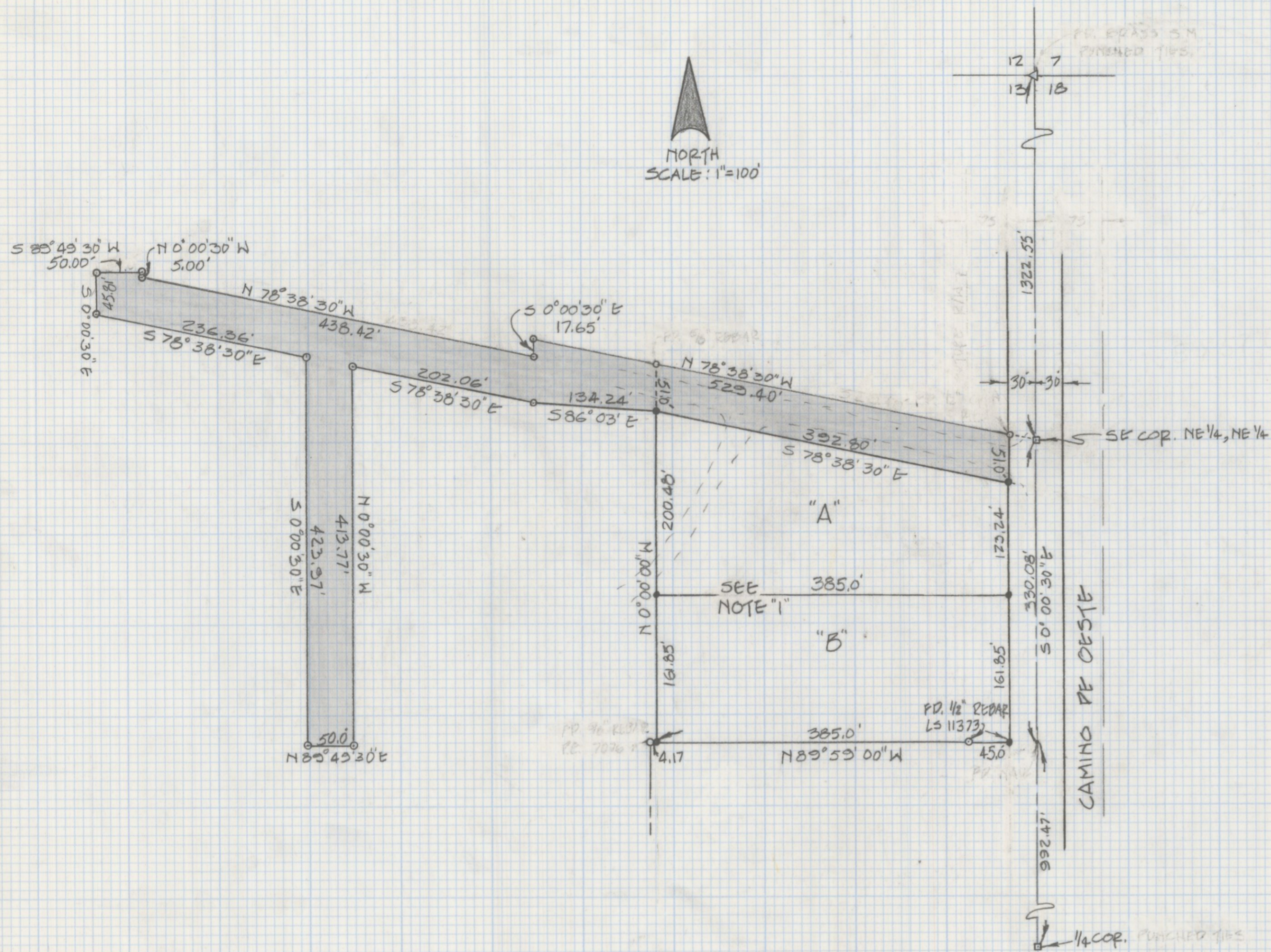


DISCLAIMER:

This unrecorded Record of Survey was donated to the City of Tucson. The City of Tucson provides this data for your personal use "as is." Additionally, the City of Tucson provides this information with the understanding that it is not guaranteed to be accurate, correct or complete and conclusions drawn from such information are the responsibility of the user.



NOTES:

- 1) SURVEY BY LYNN HANSEN.
- 2) PARCEL DESCRIBED IN DOCKET BOOK 7031 PAGE 1149-1150 OFFICE OF PIMA COUNTY RECORDER, PIMA CO. ARIZONA.
- 3) ○ FOUND BY SURVEY WHERE NOTED.
- 4) ● 1/2" REBAR SET BY SURVEY

SKETCH

OF LEGAL DESCRIPTION DESCRIBED IN DOCKET 2031 PAGE 1149-1150, OFFICE OF PIMA CO. RECORDER, PIMA CO. ARIZONA. & E 1/2 OF THE NE 1/4 OF SECTION 13 T13S, R12E G & SR B & M, PIMA COUNTY ARIZONA.



Z-2018-309
 ROBERT F. MELLEN
 REGISTERED LAND SURVEYOR
 TUCSON, ARIZONA
 JOB# 85-53