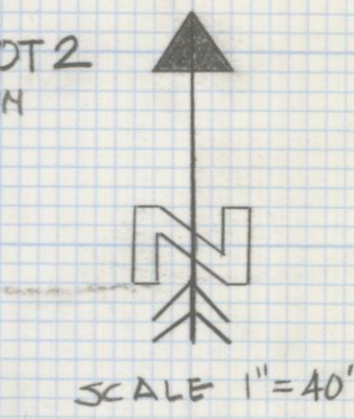
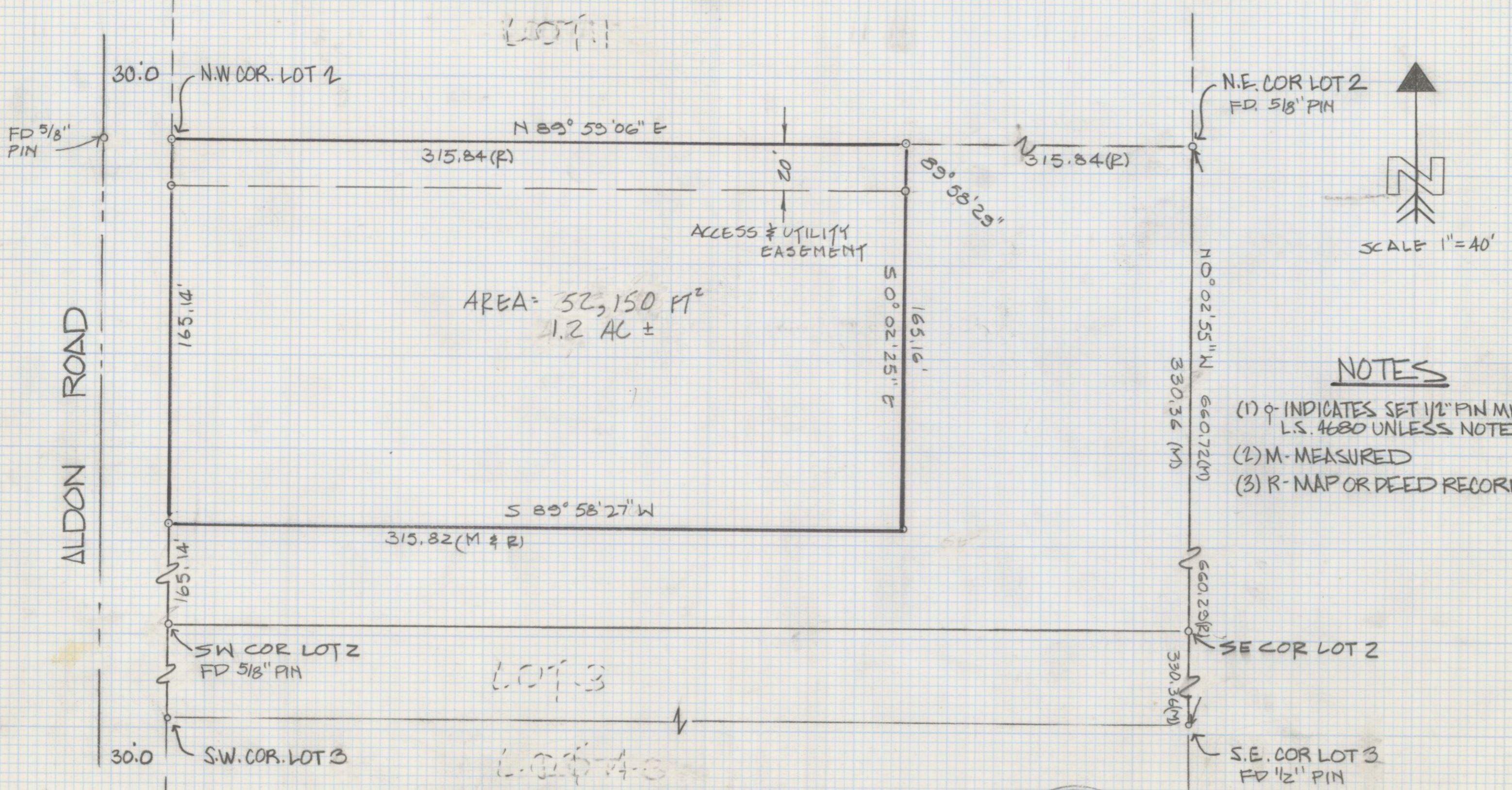


DISCLAIMER:

This unrecorded Record of Survey was donated to the City of Tucson. The City of Tucson provides this data for your personal use "as is." Additionally, the City of Tucson provides this information with the understanding that it is not guaranteed to be accurate, correct or complete and conclusions drawn from such information are the responsibility of the user.



- NOTES**
- (1) ♀ INDICATES SET 1/2" PIN MKD L.S. 4680 UNLESS NOTED
 - (2) M - MEASURED
 - (3) R - MAP OR DEED RECORD

RESULTS OF SURVEY

OF THE WEST HALF OF THE NORTH HALF OF LOT 2 OF OLD TUCSON RANCH ESTATES #1 RECORDED IN BOOK 9 OF MAPS AND PLATS AT PAGE 116 IN THE OFFICE OF THE PIMA COUNTY RECORDER PIMA COUNTY, ARIZONA



Z-2018-314
 ROBERT F. MELLEN
 REGISTERED LAND SURVEYOR
 TUCSON, ARIZONA
 JOB # 85-59