

DISCLAIMER:

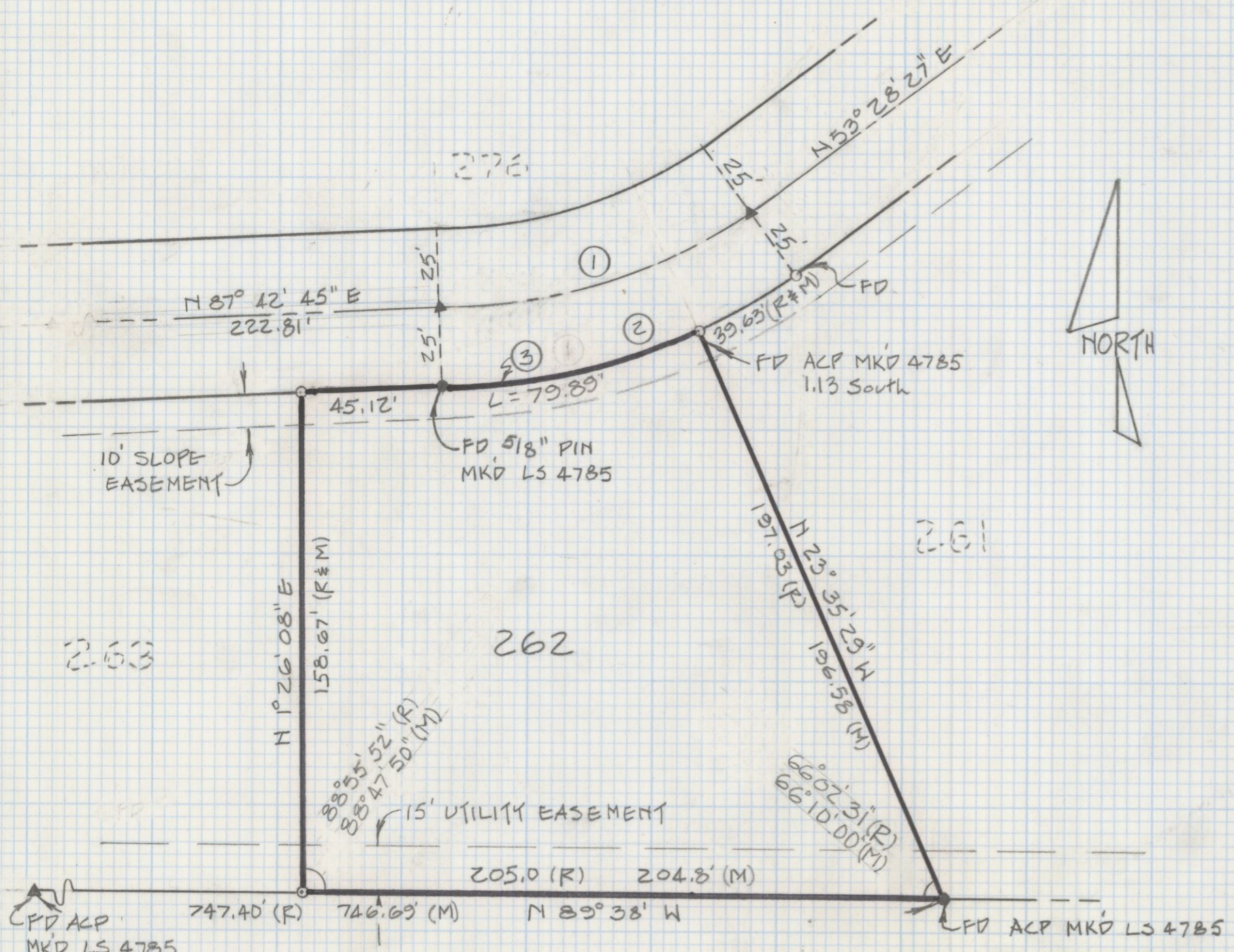
This unrecorded Record of Survey was donated to the City of Tucson. The City of Tucson provides this data for your personal use "as is." Additionally, the City of Tucson provides this information with the understanding that it is not guaranteed to be accurate, correct or complete and conclusions drawn from such information are the responsibility of the user.

CURVE DATA

NO.	DELTA	RADIUS	TANGENT	LENGTH	CHORD
1	34°14'18"	175.00'	53.90'	104.58'	103.03'
2	34°14'18"	200.00'	61.60'	119.52'	117.75'
3	22°53'12"	200.00'	40.49'	79.89'	79.36'

NOTES:

- (1) INDICATES 1/2" STEEL PIN SET - MKD LS 4680 UNLESS OTHERWISE NOTED.
- (2) R MAP OR DEED RECORD
- (3) M MEASURED
- (4) ALL BEARINGS FROM RECORD PLAT BOOK 23 PG. 96



RESULTS OF SURVEY

OF LOT 262 ORACLE HEIGHTS ESTATES AS RECORDED IN THE OFFICE OF THE PIMA COUNTY RECORDER BOOK 23 PAGE 96 PIMA COUNTY, ARIZONA.

SCALE: 1" = 40'



Z-2018-316
 ROBERT F. MELLEN
 REGISTERED LAND SURVEYOR
 TUCSON, ARIZONA
 JOB # 85-61

CPD ACP MKD LS 4785
 & LOS ALTOS & MONTEBELLA DRIVE