

# **DISCLAIMER:**

**This unrecorded Record of Survey was donated to the City of Tucson. The City of Tucson provides this data for your personal use "as is." Additionally, the City of Tucson provides this information with the understanding that it is not guaranteed to be accurate, correct or complete and conclusions drawn from such information are the responsibility of the user.**



OMAR DRIVE

LA CIOLLA BLVD

75.0

289

EXISTING 30.0 UTILITY EASEMENT

50 AND 100 YEAR FLOOD LINE

290

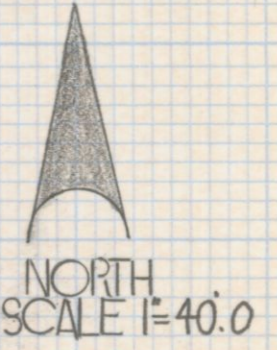
ORACLE HEIGHTS ESTATES (BOOK 10 PAGE 67)

75.0

15' SEWER ESMT RECORDED IN DKT 3378 PG. 106

291

7.5



RESULTS OF SURVEY

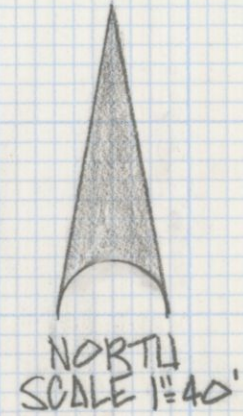
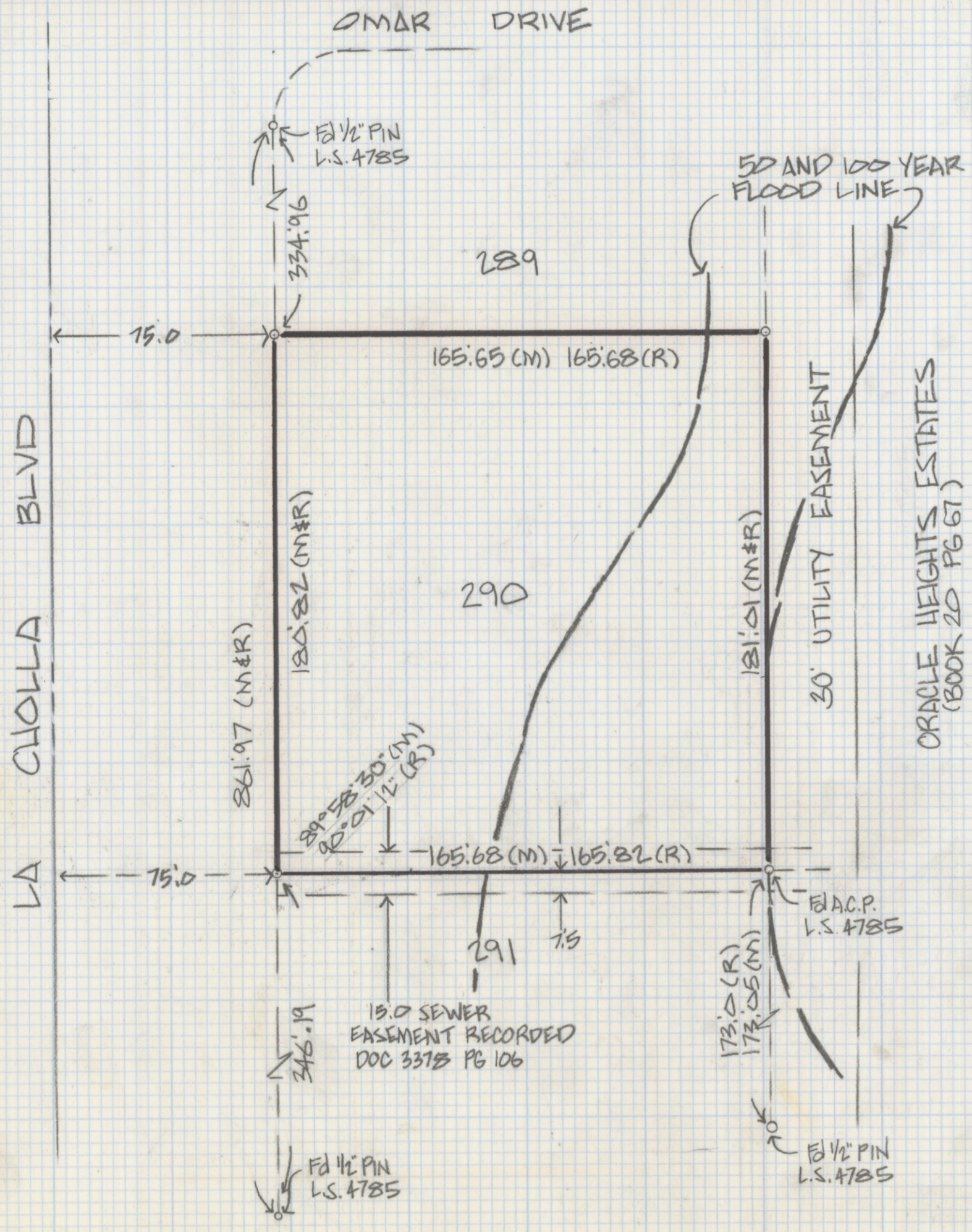
OF LOT 290 ORACLE HEIGHTS ESTATES RECORDED IN BOOK 24 OF MAPS AND PLATS AT PAGE 87 IN THE OFFICE OF THE PIMA COUNTY RECORDER PIMA COUNTY ARIZONA

NOTES

- (1) -  $\circ$  INDICATES SET 1/2" PIN MKD L.S. 4680 UNLESS NOTED
- (2) M - MEASURED
- (3) R - MAP OR DEED RECORD

Z-2018-321 1/2  
ROBERT F. MELLEN  
REGISTERED LAND SURVEYOR  
TUCSON, ARIZONA  
JOB #85-74





RESULTS OF SURVEY

OF LOT 290 OF ORACLE HEIGHTS ESTATES  
RECORDED IN BOOK 24 OF MAPS AND PLATS  
AT PAGE 87 IN THE OFFICE OF THE PIMA  
COUNTY RECORDER PIMA COUNTY ARIZONA

NOTES

- (1) ♀ INDICATES SET 1/2" PIN MKD L.S. 4680 UNLESS NOTED
- (2) M - MEASURED
- (3) R - MAP OR DEED RECORD



Z-2018-321 212  
ROBERT F. MELLEN  
REGISTERED LAND SURVEYOR  
TUCSON, ARIZONA  
JOB # 85-74