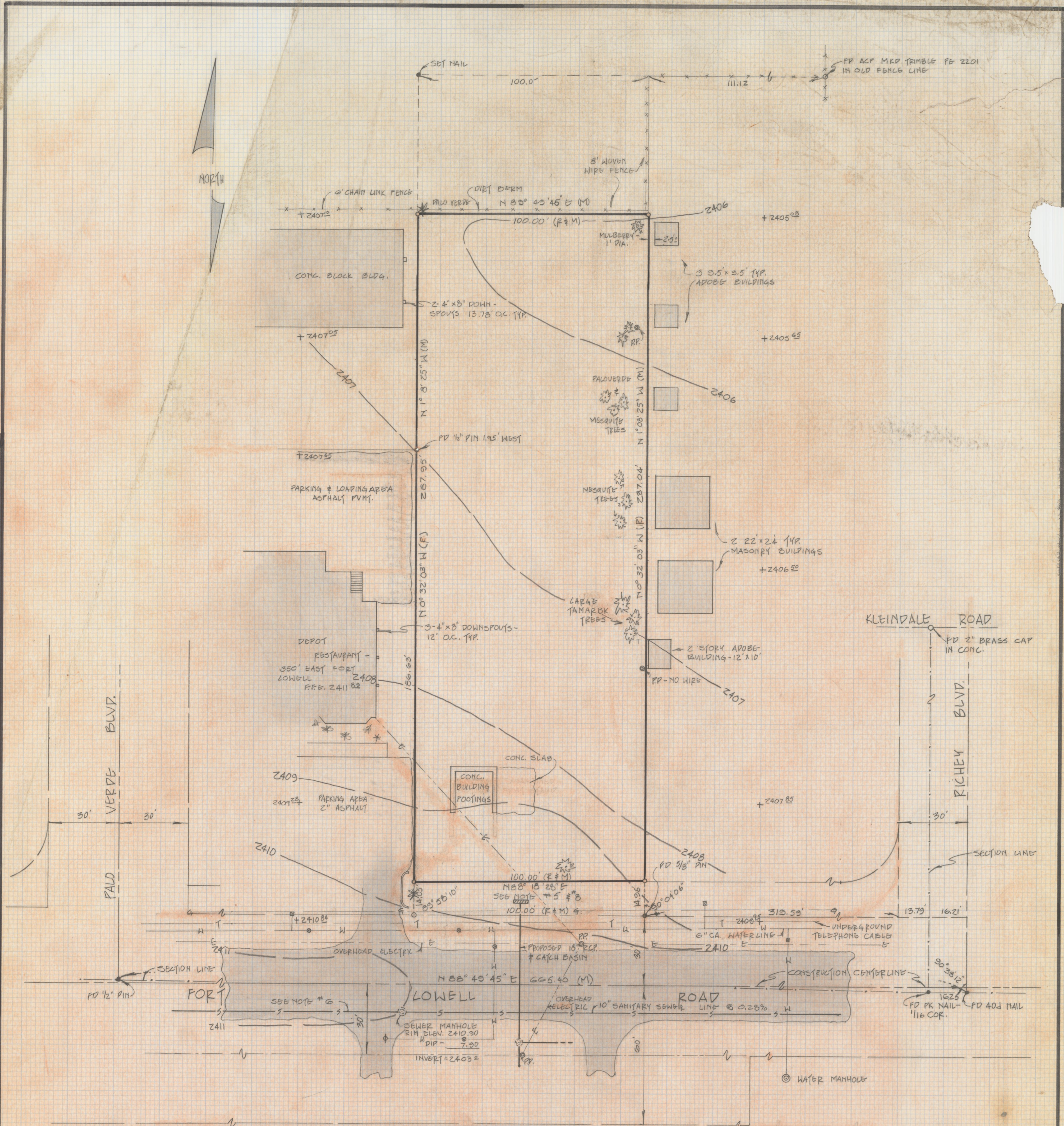


DISCLAIMER:

This unrecorded Record of Survey was donated to the City of Tucson. The City of Tucson provides this data for your personal use "as is." Additionally, the City of Tucson provides this information with the understanding that it is not guaranteed to be accurate, correct or complete and conclusions drawn from such information are the responsibility of the user.



SCALE: 1" = 20'
 CONTOUR INT. = 1'

NOTES:

- (1) P - MAP OR PDED RECORD
- (2) M - MEASURED
- (3) BASIS OF BEARINGS N 88° 49' 45" E FORT LOWELL ROAD
 CO. PLAN NO. R-84-02 SHEET 4 OF 5
- (4) Q - INDICATES 1/2" PIN SET UNLESS OTHERWISE NOTED
- (5) FUTURE CITY OF TUCSON RIGHT-OF-WAY - PLAN R-84-02
 FOR FUTURE PAVING IMPROVEMENTS - PLAN I-83-21 SHEET 16 OF 51
- (6) SEE PIMA COUNTY WASTEWATER MANAGEMENT PLAN G-145
 SHEET 18 OF 21
- (7) CAUTION - THERE ARE UNDERGROUND UTILITIES IN THIS AREA.
 IF DESIGN LOCATION IS CRITICAL BEFORE DIGGING CALL
 BLUE STAKE FOR LOCATION 782-2211
- (8) CITY OF TUCSON PLAN I-83-21 SHEET 16 OF 51 SHOWS
 PROPOSED CURBS, SIDEWALKS, STORM SEWERS, AND A
 CATCH BASIN IN THIS AREA.

RESULTS OF SURVEY

OF A PORTION OF THE WEST 1/2 OF THE SOUTHWEST 1/4 OF THE SECTION 28
 OF TOWNSHIP 13 EAST, RANGE 14 SOUTH GILA & SALI
 RIVER BAS & MERIDIAN, PIMA COUNTY, ARIZONA



Z-2018-325
 ROBERT F. MELLETT
 REGISTERED LAND SURVEYOR
 TUCSON, ARIZONA
 JOB # 85-78