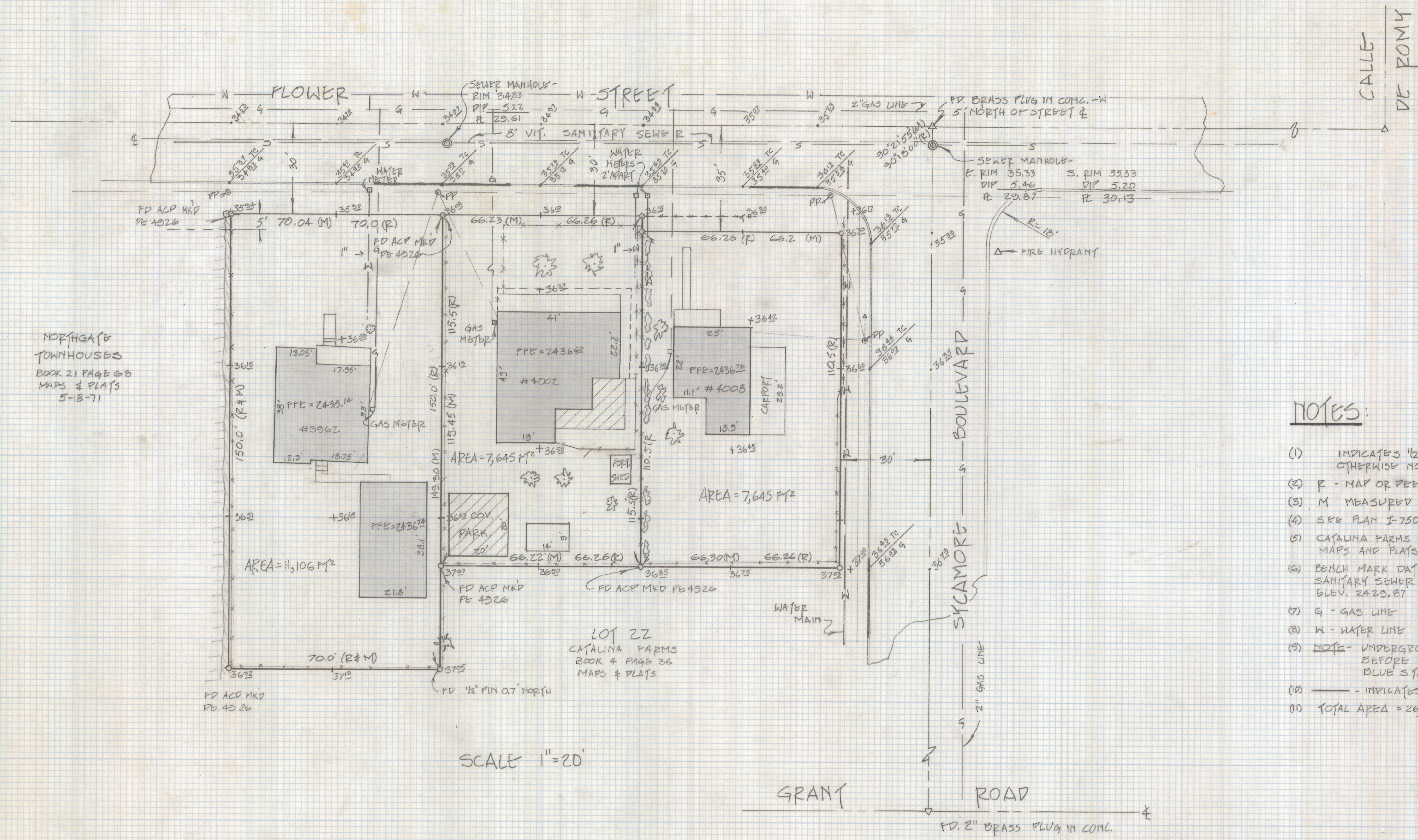


DISCLAIMER:

This unrecorded Record of Survey was donated to the City of Tucson. The City of Tucson provides this data for your personal use "as is." Additionally, the City of Tucson provides this information with the understanding that it is not guaranteed to be accurate, correct or complete and conclusions drawn from such information are the responsibility of the user.



NORTHGATE
TOWNHOUSES
BOOK 21 PAGE 68
MAPS & PLATS
5-18-71

NOTES:

- (1) INDICATES 1/2" PIN MK'D LS 4680 SET UNLESS OTHERWISE NOTED
- (2) F - MAP OR FIELD RECORD
- (3) M - MEASURED
- (4) SEE PLAN I-750 SHEET B OF 12 & G OF 12
- (5) CATALINA FARMS SUBDIVISION RECORDED IN BOOK 4 PAGE 36 OF MAPS AND PLATS 6-3-23
- (6) BENCH MARK DATUM CITY OF TUCSON FLOWING OF SANITARY SEWER FLOWER STREET AND SYCAMORE BLVD. ELEV. 2423.87
- (7) G - GAS LINE
- (8) W - WATER LINE
- (9) NOTE - UNDERGROUND UTILITIES TAKEN FROM EXISTING MAPS - BEFORE DIGGING, OR, IF DESIGN IS CRITICAL, CALL BLUE S TAKE FOR ACCURATE LOCATION 792-2211
- (10) - - - - - INDICATES CURB DEPRESSION
- (11) TOTAL AREA = 26,400 sq ft

SCALE 1" = 20'

RESULTS OF SURVEY

OF A PORTION OF LOT 22 OF CATALINA FARMS SUBDIVISION AND A PORTION OF THE EAST 1/2 OF THE NORTHWEST 1/4 OF THE SOUTH-WEST 1/4 OF THE SOUTHWEST 1/4 OF SECTION 34 TOWNSHIP 13 SOUTH RANGE 14 EAST 51A AND 51B RIVER BASE AND MERIDIAN, PIMA COUNTY, ARIZONA.



Z-2018-329
ROBERT F. MULLEN
REGISTERED LAND SURVEYOR
TUCSON, ARIZONA
JOB # 85-83